

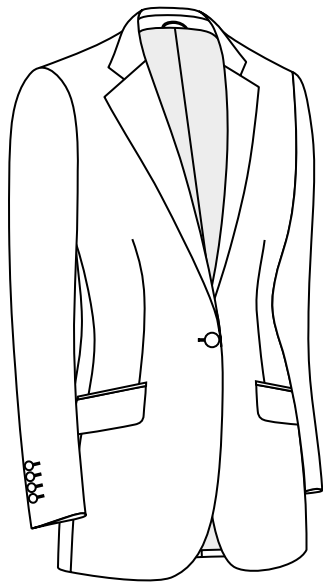


.....

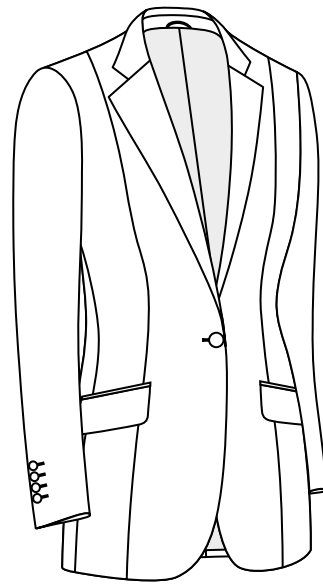
COSTUME

.....

MADE TO MEASURE

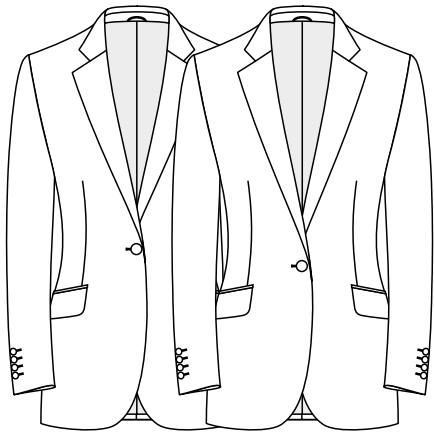


Code
BLU
BLUE line



Code
BLA
BLACK line

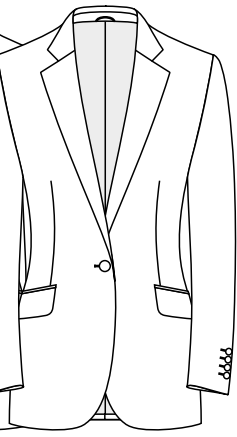




Code

A01

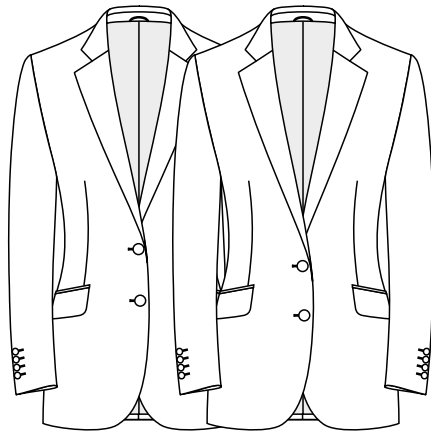
SB, 1 button,
normal closure



Code

A02

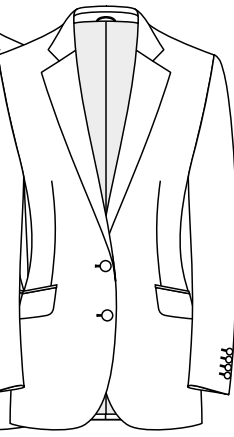
SB, 1 button,
lower closure



Code

A03

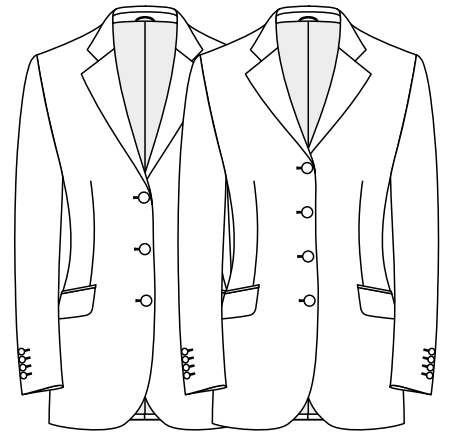
SB, 2 buttons,
normal closure



Code

A04

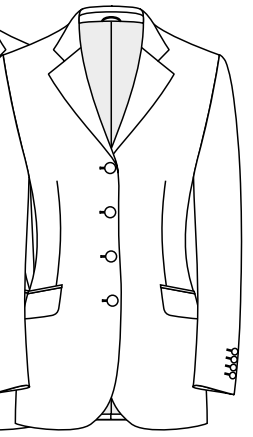
SB, 2 buttons,
lower closure



Code

A05

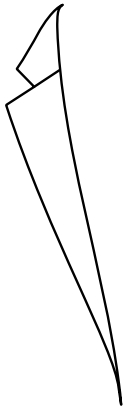
SB, 3 buttons



Code

A06

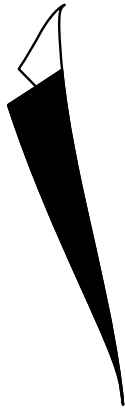
SB, 4 buttons



Variant

01

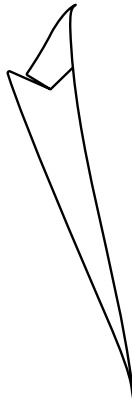
Normal lapel



Variant

03

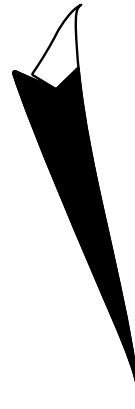
Normal lapel,
contrast



Variant

04

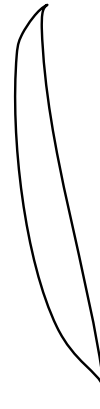
Peak lapel



Variant

06

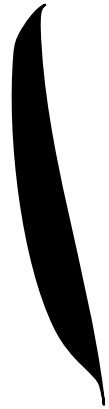
Peak lapel,
contrast



Variant

07

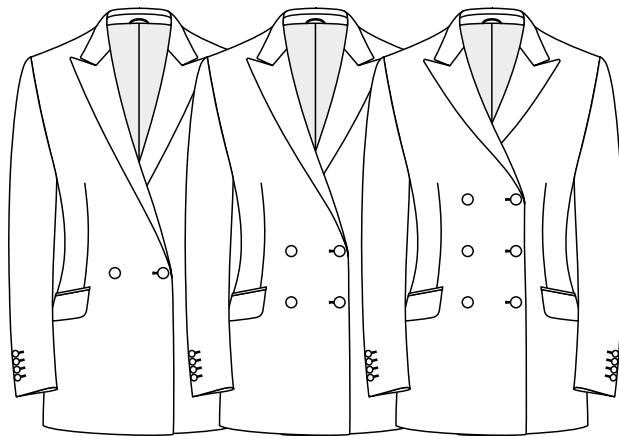
Shawl collar



Variant

08

Shawl collar,
contrast



Code

A07

DB, 2 x 1

Code

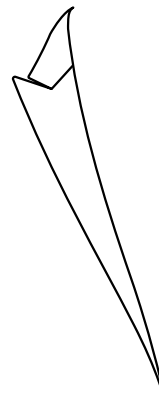
A08

DB, 4 x 2

Code

A09

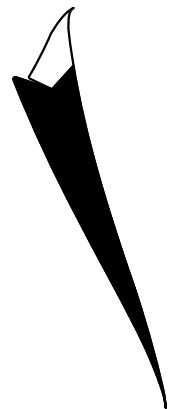
DB, 6 x 3



Variant

04

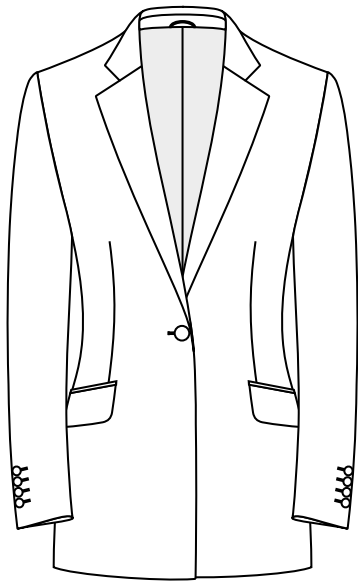
Peak lapel, classic



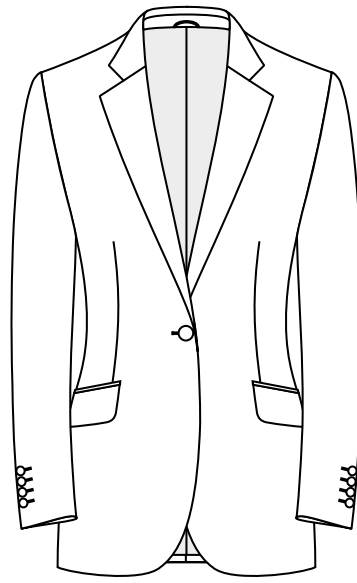
Variant

06

Peak lapel, classic,
contrast

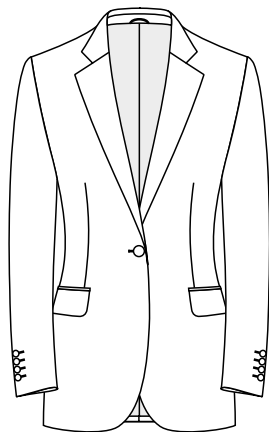


Code
C01
Square



Code / Variant
C02 01
Slightly round

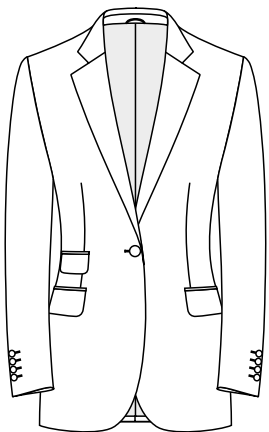




Code

D01

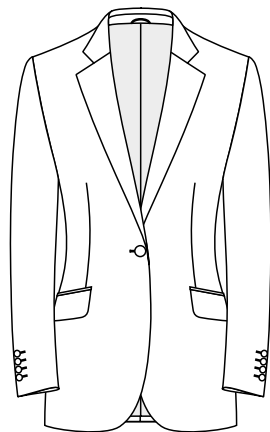
Flap side pockets



Code

D02

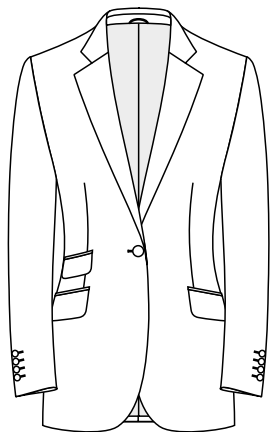
Flap side pockets, ticket pocket



Code

D03

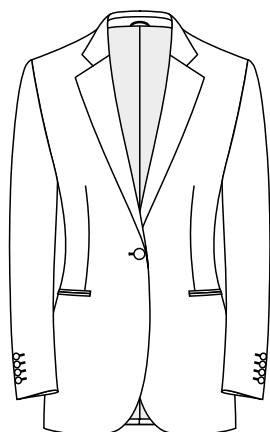
Slant flap side pockets



Code

D04

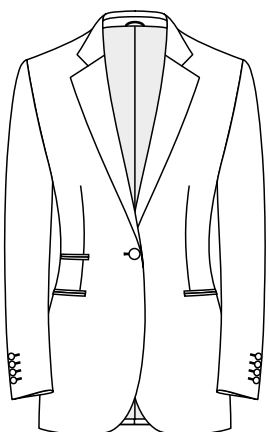
Slant flap side pockets, ticket pocket



Code

D05

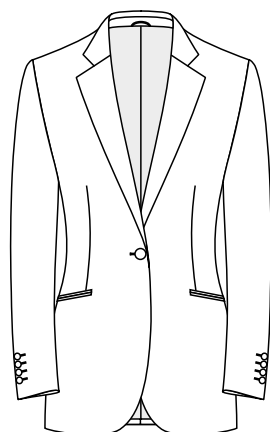
Jettted side pockets



Code

D06

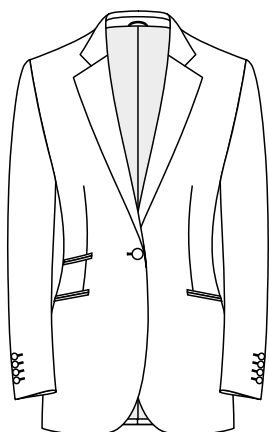
Jettted side pockets, ticket pocket



Code

D07

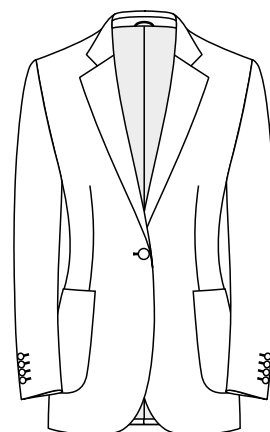
Slant jettted side pockets



Code

D08

Slant jettted side pockets, ticket pocket



Code

D09

Side patch pockets



Variant

00

Without breast pocket



Variant

01

Welt breast pocket



Variant

02

Jettted breast pocket



Variant

03

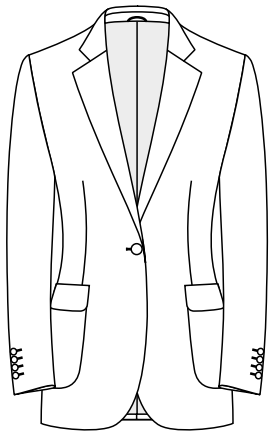
Patch breast pocket



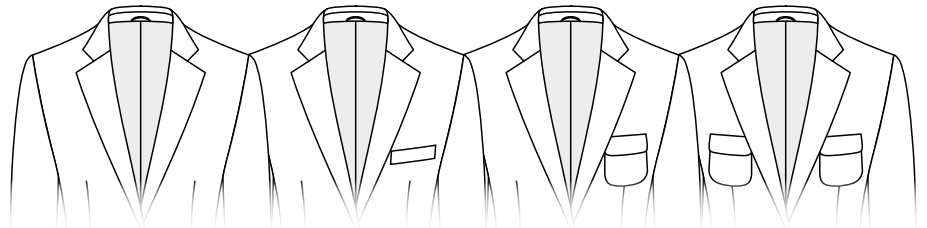
Variant

04

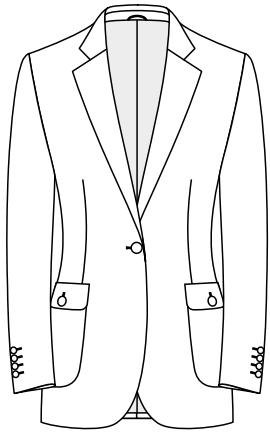
Breast pocket - welted, 1,5 cm



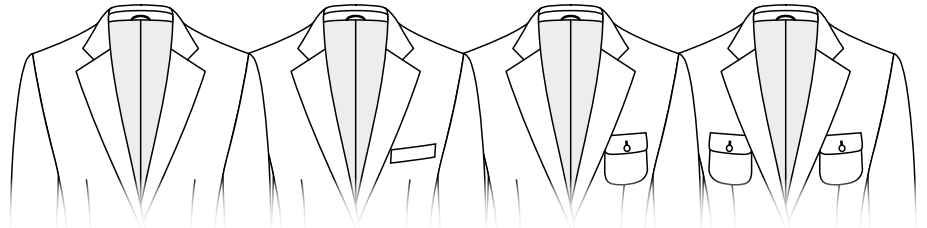
Code
D10
Side patch
pockets with
flap



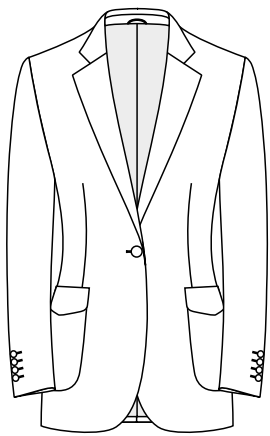
Variant 00 Without breast pocket	Variant 01 Welt breast pocket	Variant 06 Breast patch pocket with flap	Variant 07 Breast patch pockets with flap- both
--	---	--	--



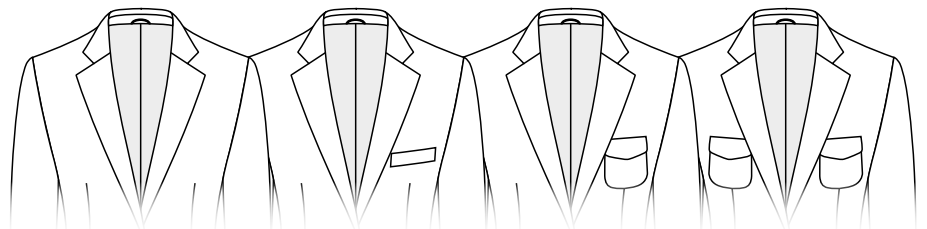
Code
D11
Side patch
pockets with
flaps and
buttons



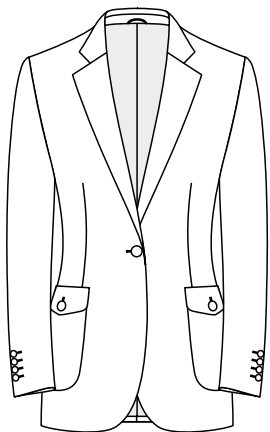
Variant 00 Without breast pocket	Variant 01 Welt breast pocket	Variant 08 Breast patch pocket with flap and button	Variant 09 Breast patch pockets with flap and button-both
--	---	--	--



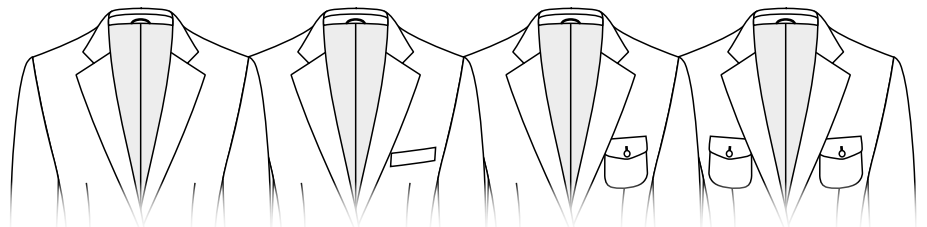
Code
D12
Side patch
pockets with
shaped flap



Variant 00 Without breast pocket	Variant 01 Welt breast pocket	Variant 10 Breast patch pocket with shaped flap	Variant 11 Breast patch pockets with shaped flap - both
--	---	--	--

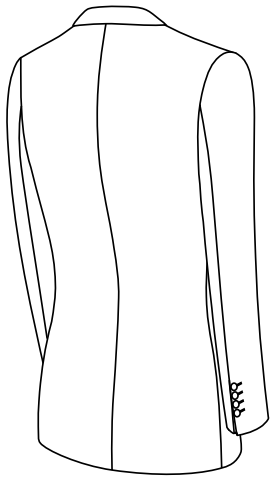


Code
D13
Side patch
pockets with
shaped flaps
and buttons



Variant 00 Without breast pocket	Variant 01 Welt breast pocket	Variant 12 Breast patch pocket with shaped flap and button	Variant 13 Breast patch pkt. with shaped flap and button-both
--	---	--	--

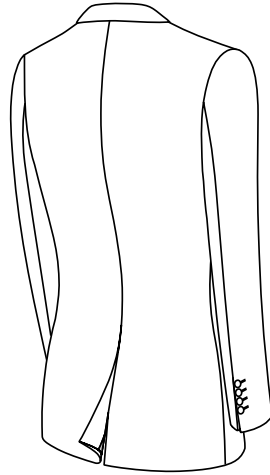




Code

E01

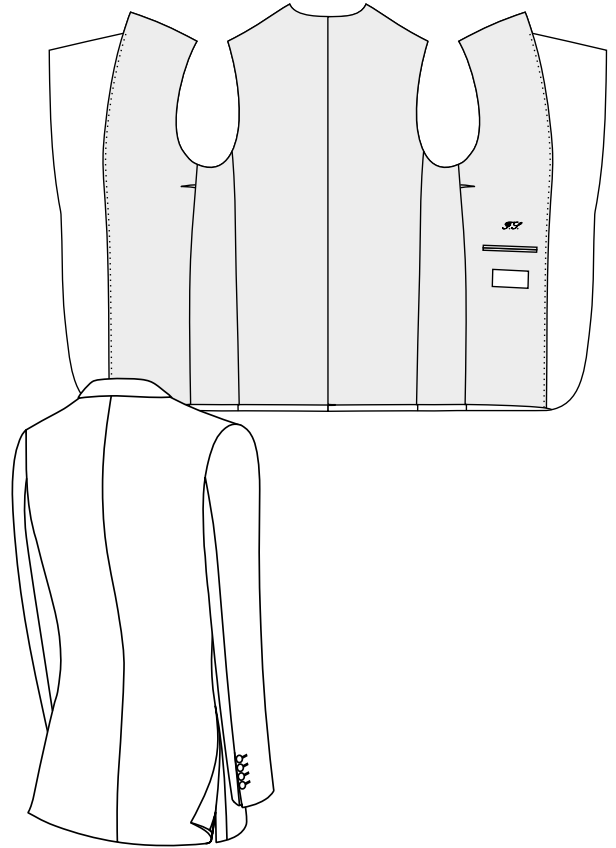
Normal, plain back



Code

E02

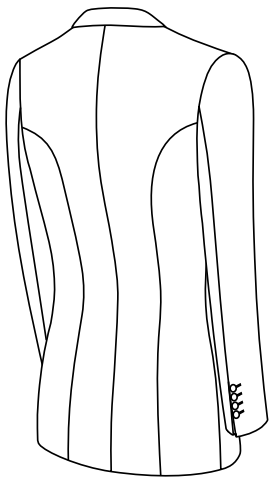
Normal, centre vent



Code

E03

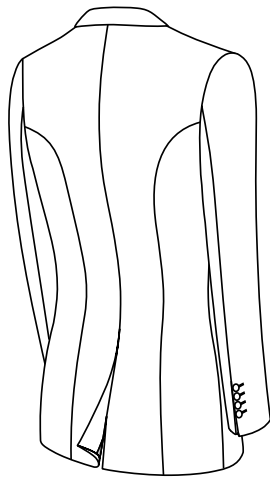
Normal, side vents



Code

E04

Princess, shaped back seams, no vent



Code

E05

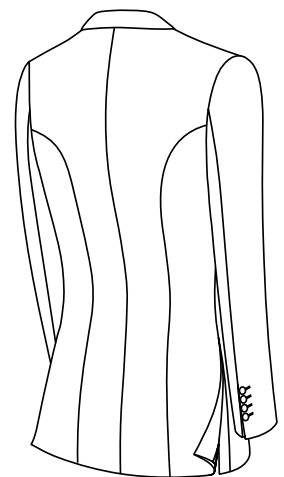
Princess, shaped back seams, centre vent



Code

E06

Princess, shaped back seams, centre hook vent



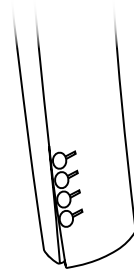
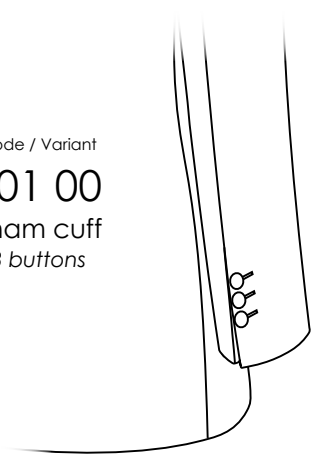
Code

E07

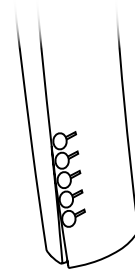
Princess, shaped back seams, side vents

Sham cuff styles

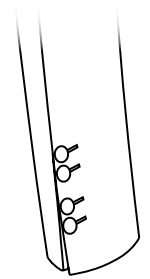
Code / Variant
F01 00
 Sham cuff
 3 buttons



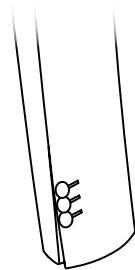
Variant
01
 4 buttons



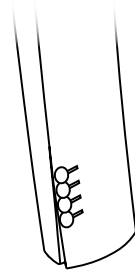
Variant
02
 5 buttons



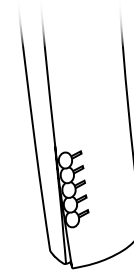
Variant
06
 2+2 buttons



Variant
03
 3 kissing buttons



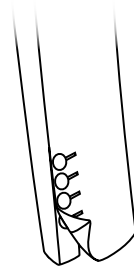
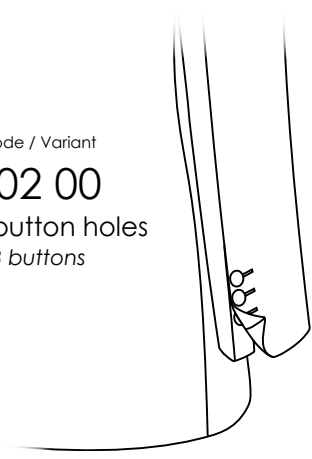
Variant
04
 4 kissing buttons



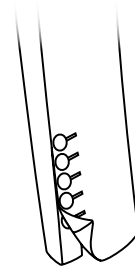
Variant
05
 5 kissing buttons

Open cuff styles *

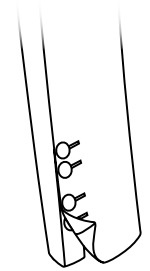
Code / Variant
F02 00
 Real button holes
 3 buttons



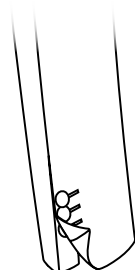
Variant
01
 4 buttons



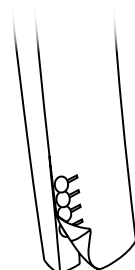
Variant
02
 5 buttons



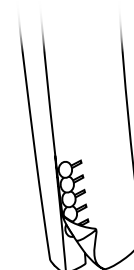
Variant
06
 2+2 buttons



Variant
03
 3 kissing buttons



Variant
04
 4 kissing buttons



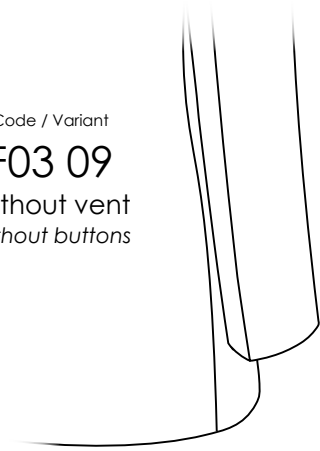
Variant
05
 5 kissing buttons

* Labelling for options with surcharge

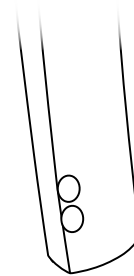


Closed seams styles

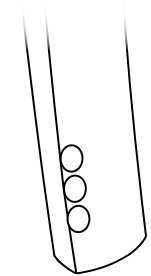
Code / Variant
F03 09
 Without vent
 Without buttons



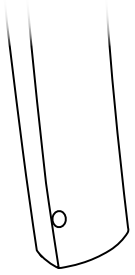
Variant
00
 1 big button



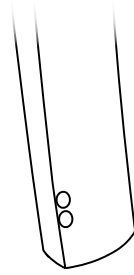
Variant
01
 2 big buttons



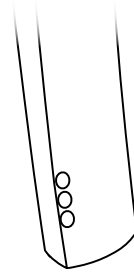
Variant
02
 3 big buttons



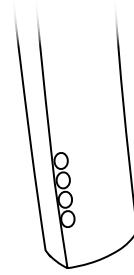
Variant
04
 1 small button



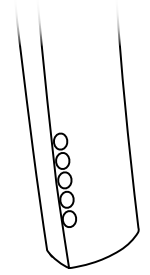
Variant
05
 2 small buttons



Variant
06
 3 small buttons

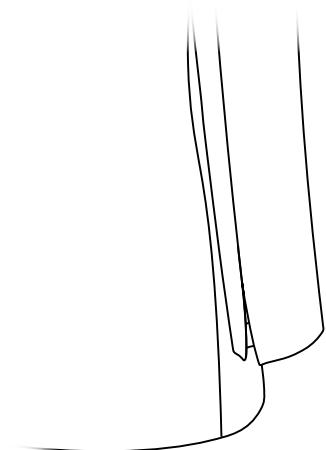


Variant
07
 4 small buttons

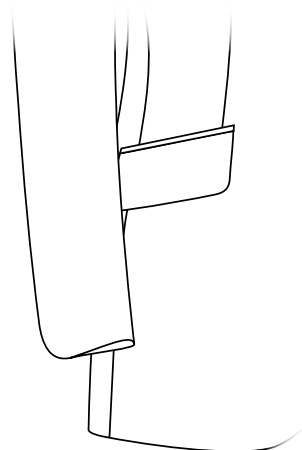


Variant
08
 5 small buttons

Touch vent cuff styles

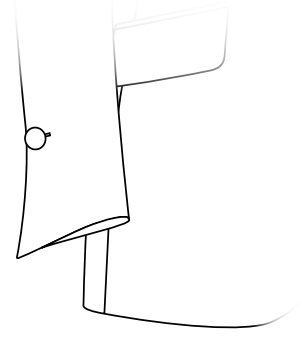


Code
F04
 Touch-squared cuff

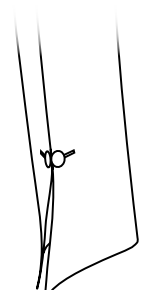


Code
F06
 Touch-round cuff

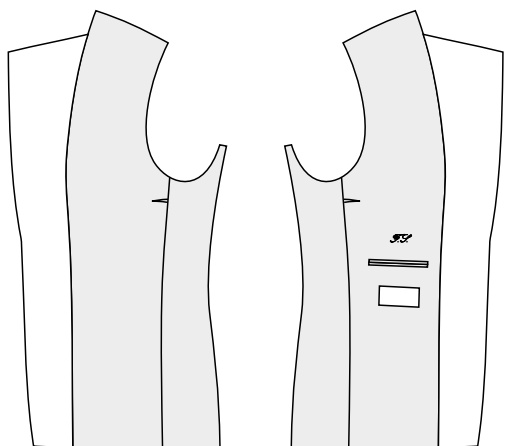
Code
F05
 Touch-flaired cuff



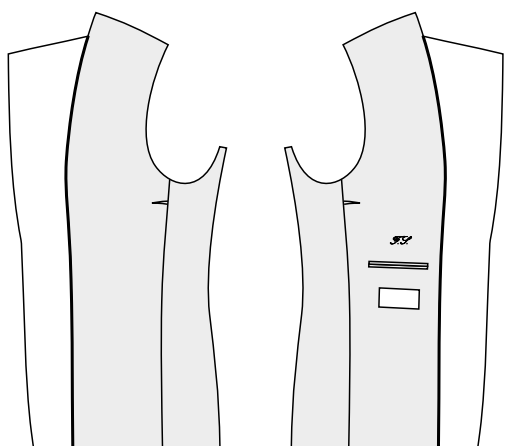
Variant
00
 Real button holes, big buttons as cuff links



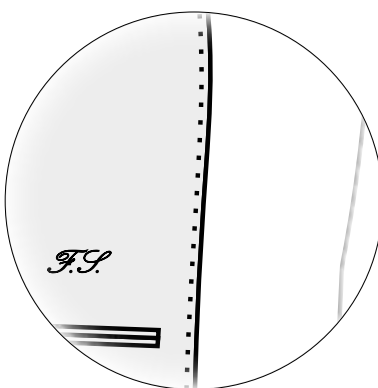
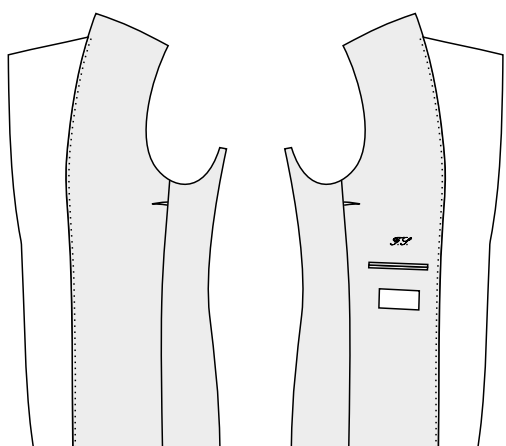
Variant
01
 Real button holes, small buttons as cuff links



Code
G01
 Straight facing, inside
 pocket left



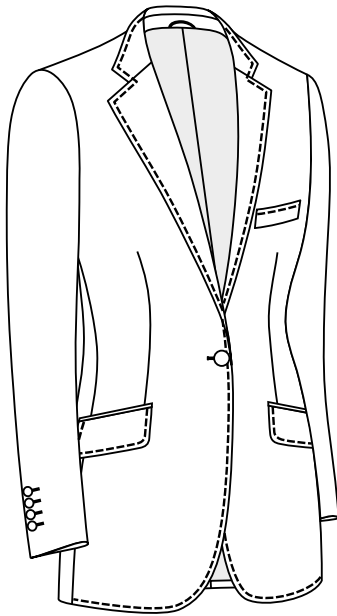
Code
G02
 Straight facing, piping,
 inside pocket left



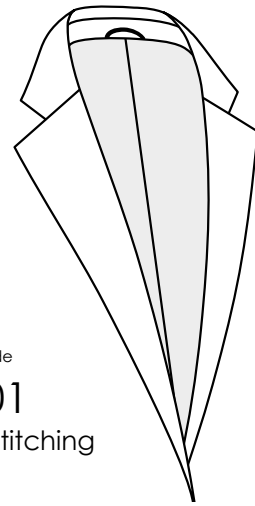
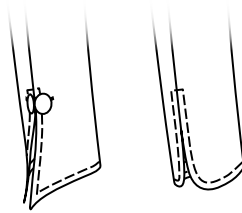
Code
G03
 Straight facing,
 Columbia, inside
 pocket left

For contrasts you can choose the colour of piping, inside pocket jettings * and columbia-stitching * from the lining colour card.

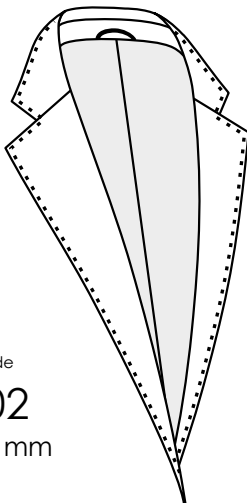




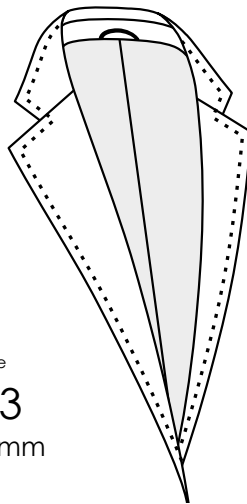
Top stitch / HSE is applied on the edge



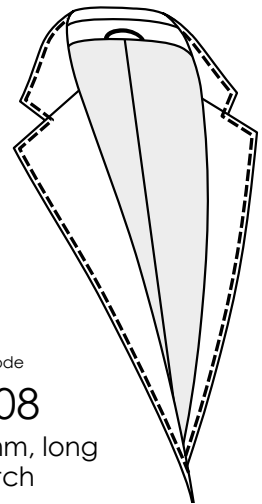
Code
H01
Without stitching



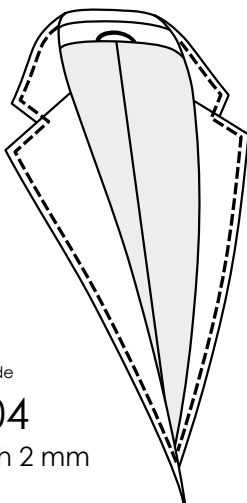
Code
H02
HSE 1 mm



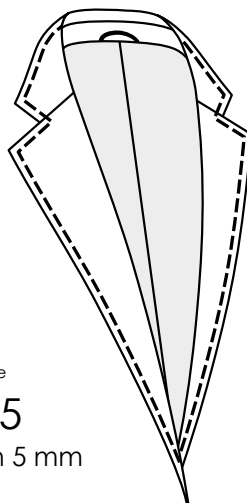
Code
H03
HSE 6 mm



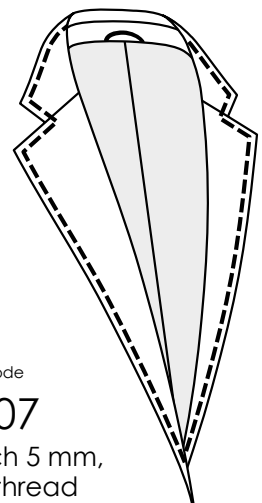
Code
H08
HSE 6 mm, long
stitch



Code
H04
Top stitch 2 mm



Code
H05
Top stitch 5 mm



Code
H07
Top stitch 5 mm,
thick thread

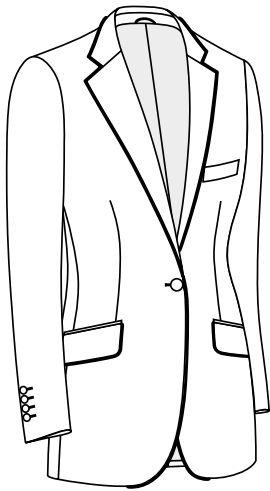
*For the contrasts you can choose the colour of HSE * or stitching * from the lining colour card.*

Piping

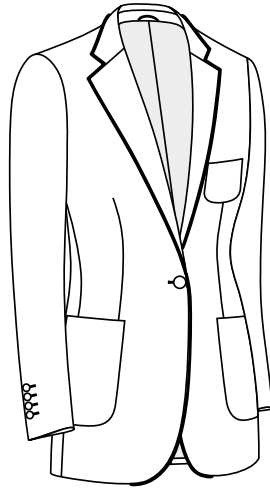
Code

H09 *

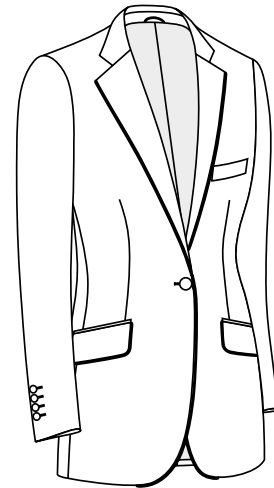
Piping - edge, collar, flaps



Variant with flap pockets, fabric undercollar



Variant with patch pockets, fabric undercollar



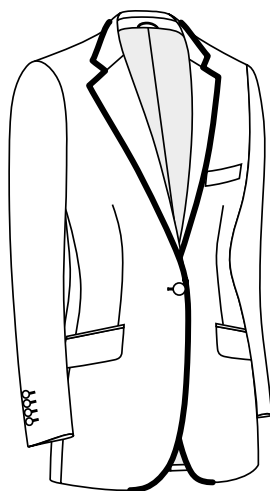
Piping not possible with melton undercollar

Taping

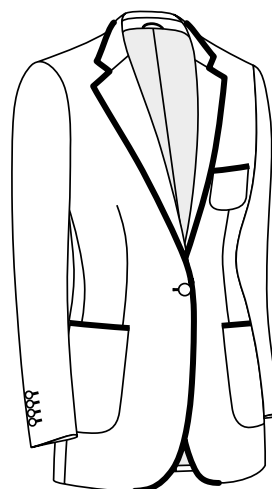
Code

H10 *

Taping - edge



Variant with flap pockets, felt collar



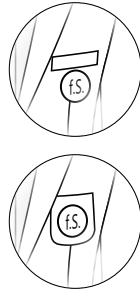
Variant with patch pockets, felt collar





Code
EA

Badge / logo to be fitted (supplied by customer)



Code
LR

Buttonhole - left lapel



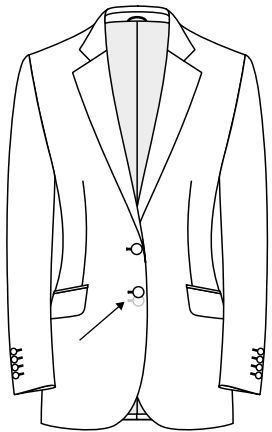
Code
RR

Lapel buttonhole - right



Code
BR

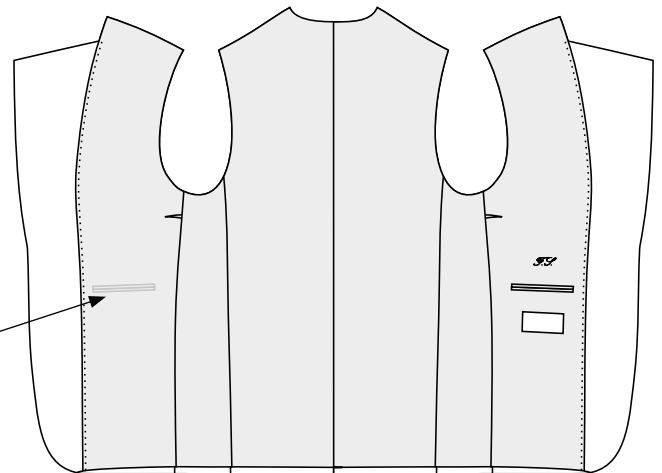
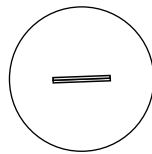
Buttonhole - both lapels



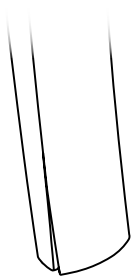
Code
RS

Rider jacket - last button higher 1,5 cm

Code
1TB
2 inside pockets, left and right



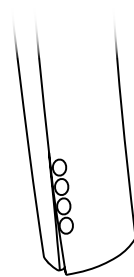
Code
EPA
Epaulet



Code

AOO

Sleeves without buttonholes and buttons



Code

AOM

Sleeves without buttonholes and buttons on

More options:

FO Front without buttonholes

SV Special embroidery

(Transfer file (pdf, jpg) + info about size, positions and colour)

SCHB Additional padding - both

SCHL Additional padding - left

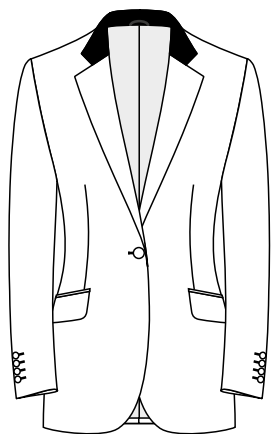
SCHR Additional padding - right

SCHK No padding

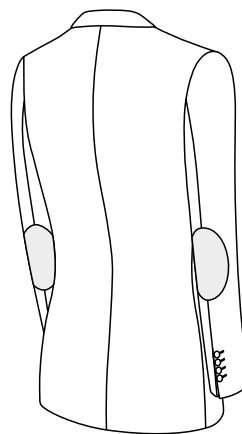
HF Heavier front fusing

LF Lighter front fusing

WF Without front fusing



Contrast - collar *

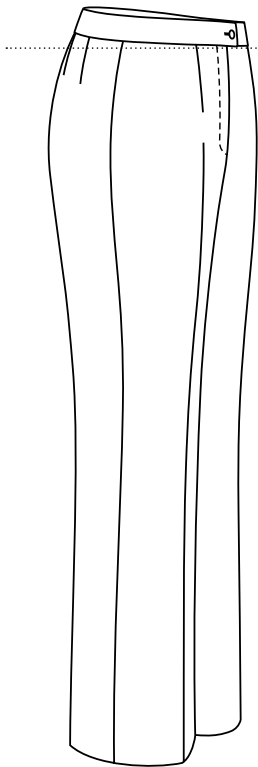


Alcantara elbow patches
round *

More options:

- Contrast - Undercollar
- Contrast - lapel button hole
- Contrast - front button holes *
- Contrast - 1st sleeve button hole from bottom *
- Contrast - 2nd sleeve button hole from bottom *
- Contrast - sleeve all button holes *
- Contrast - monogram
- Contrast - jettings inside pockets *
- Feltcollar *
- Contrast - sleeve lining
- Silk - lapel and jettings *

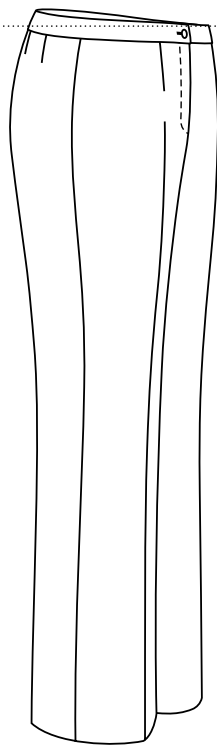




Code

BLA01

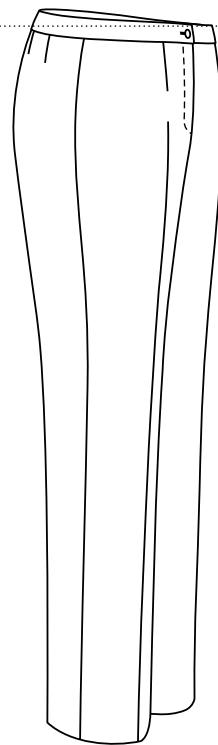
BLACK line - high
rise



Code

BLA02

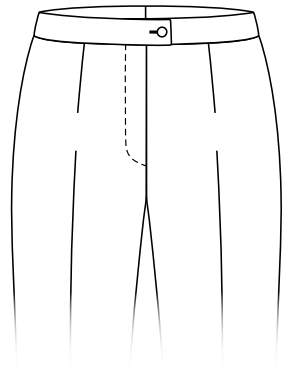
BLACK line - low rise



Code

BLU

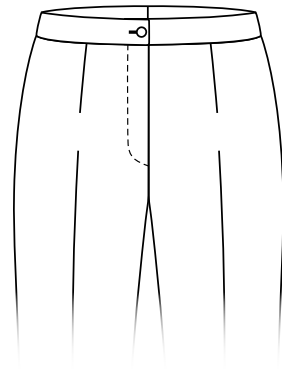
BLUE line



Code

A1

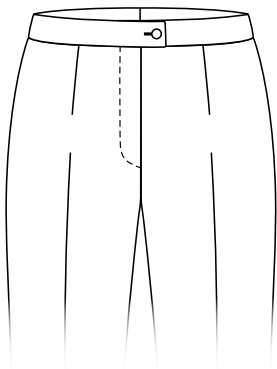
Waistband with
extension



Code

A2

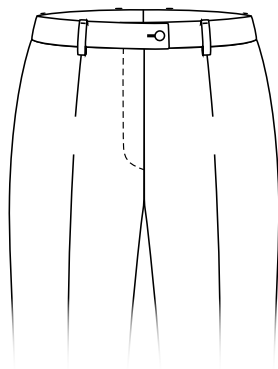
Waistband without
extension



Variant

01

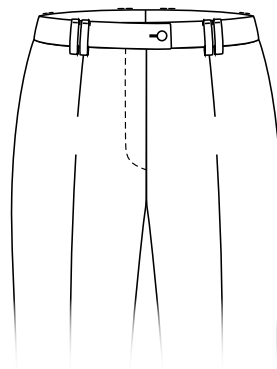
Without belt loops



Variant

02

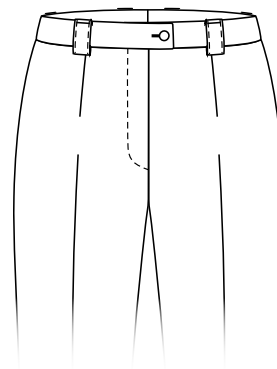
6 belt loops



Variant

03

*6 double belt
loops*

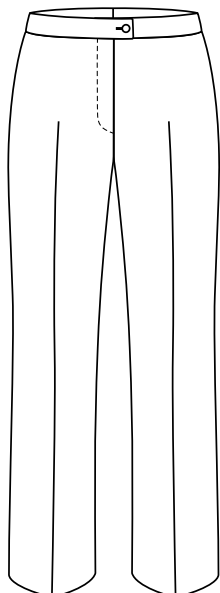


Variant

04

6 wide belt loops

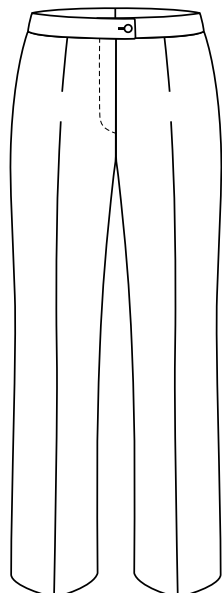




Code

B01

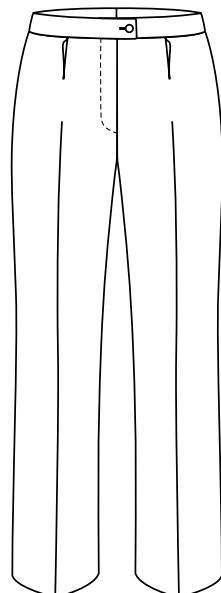
Plain front without
dartseam



Code

B02

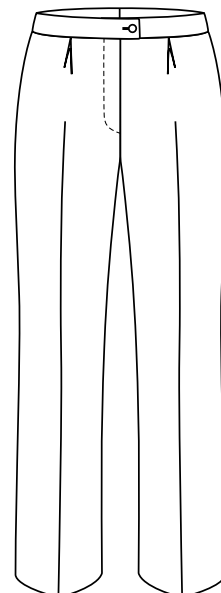
Plain front with
dartseam



Code

B03

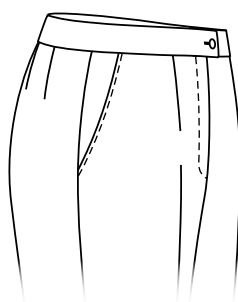
1 reverse pleat



Code

B04

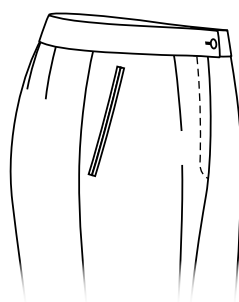
Box pleat



Code / Variant

C01 00

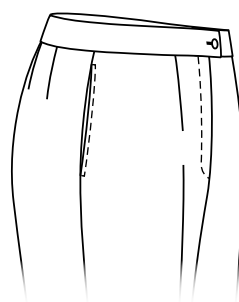
Slant side pockets
Without watch pockets



Code

C02

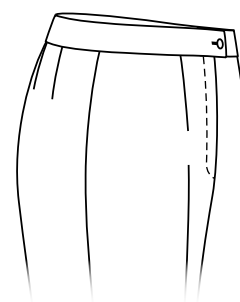
Jetted pockets



Code

C03

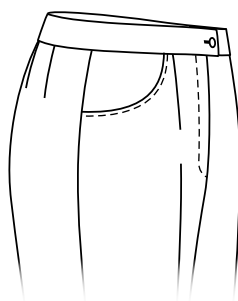
Straight side
pockets



Code / Variant

C04 00

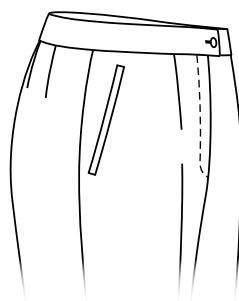
Without pockets
Without watch pockets



Code

C05

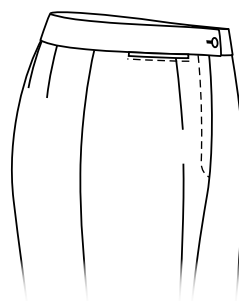
Round pockets



Code

C06

Welted pockets 1
cm



Code / Variant

C07 03

Watch pocket 9 cm
Pocket left and right

Code / Variant

C07 01

Pocket left

Code / Variant

C07 02

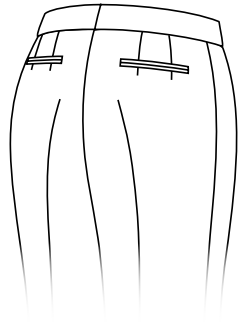
Pocket right



Code

D01

Without pockets



Code / Variant

D02 DB

Jetted pockets
Pockets left and right



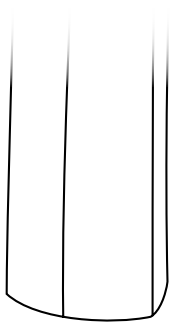
Code / Variant

D03 DB

Welted pockets
Pockets left and right

Variant
DL
Pocket left

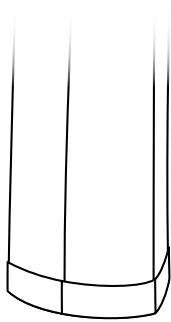
Variant
DR
Pocket right



Code / Variant

E01 EF

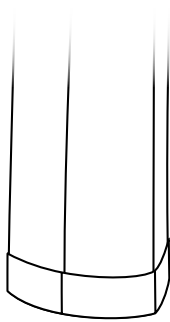
Hem 5 cm, plain
bottom
Finished



Code / Variant

E02 EF

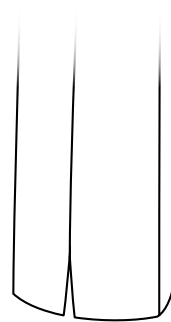
Turn-up 4 cm,
Finished



Code / Variant

E03 EF

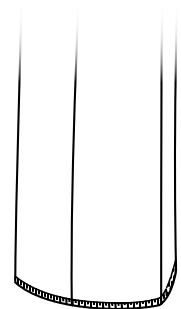
Turn-up 5 cm,
Finished



Code / Variant

E04 EF

Vent 4 cm in
side seam
Finished

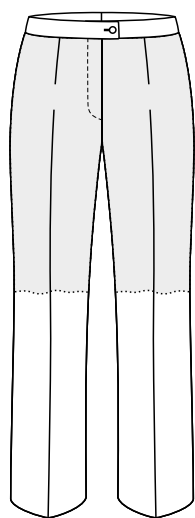


Variant

EO

Open

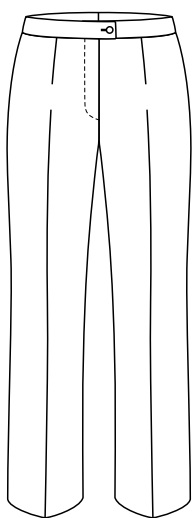




Code

F01

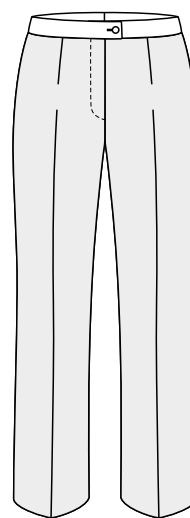
With knee lining



Code

F02

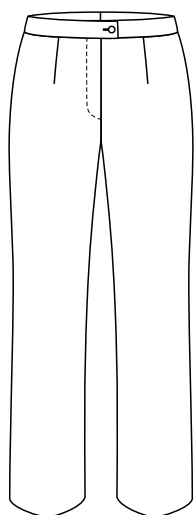
Without knee lining



Code

F03

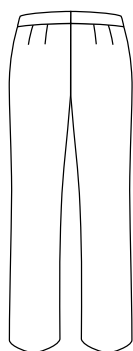
Fully Lined Trousers
(Allergic)



Code

OB

No front and
back crease

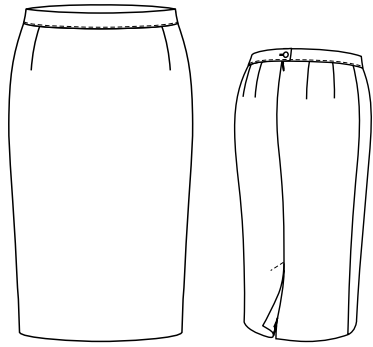


More options:

- HH Hook instead of button on waistband
- SV Special embroidery
(Transfer file (pdf, jpg) + info about size,
positions and colour)



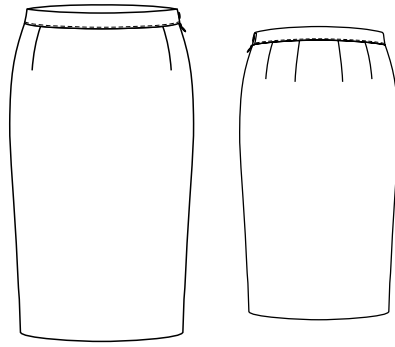
Smoking trousers -
single silk side seams
*



Code

BLU01 01

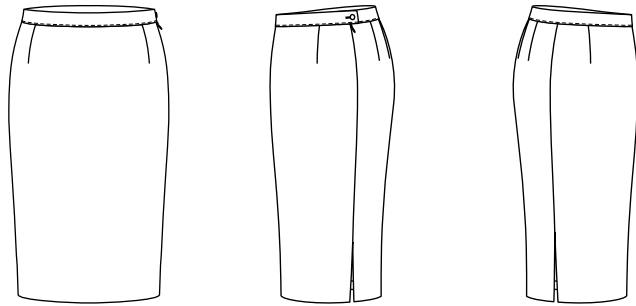
BLUE line - Straight, front plain, back with centre seam covered vent in centre back



Code

BLU02

BLUE line - Straight, front and back plain



Variant

00

without vent

Variant

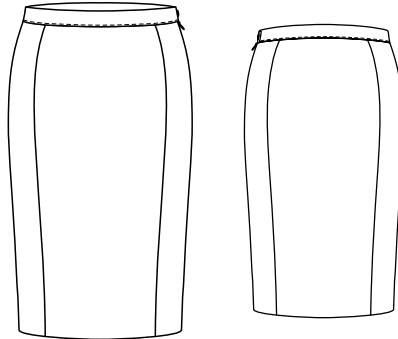
03

side vent - left seam

Variant

04

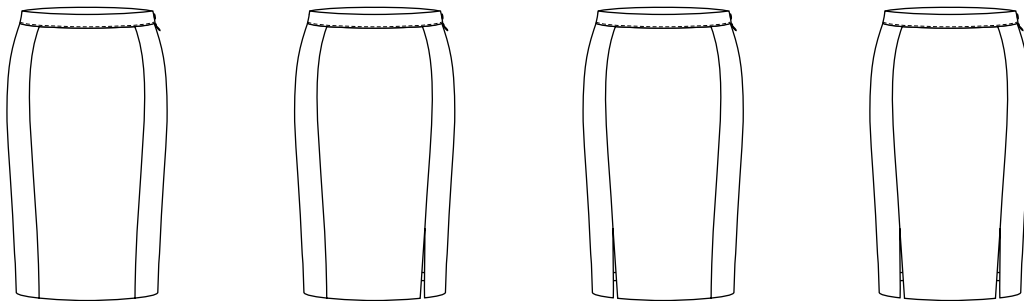
side vent - right seam



Code

BLU03

BLUE line - Straight, front and back with 2 vertical seams



Variant

00

without vent

Variant

05

side vent left vertical front seams

Variant

06

side vent right vertical front seams

Variant

07

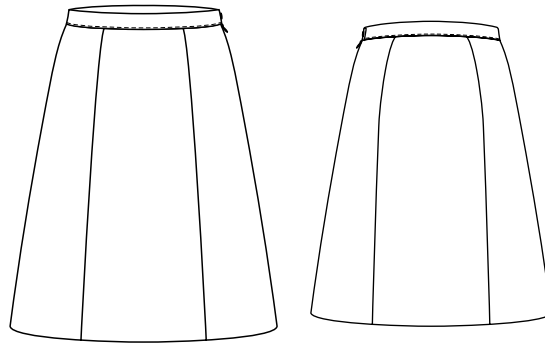
vents both sides vertical front seam



Code

PNK

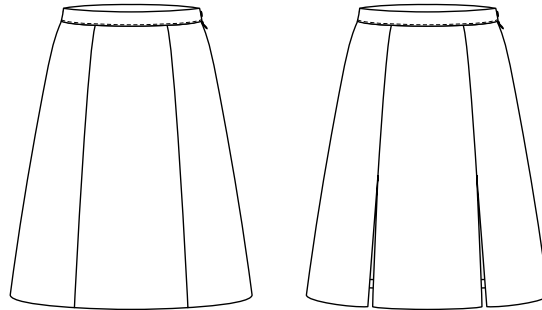
PINK line - Flared skirt, front and back with 2 vertical seams



Variant

00

without boxpleats



Variant

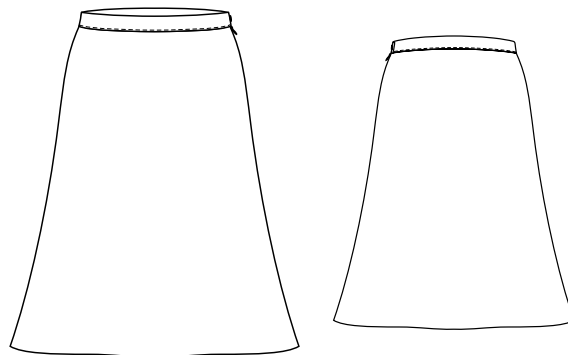
12

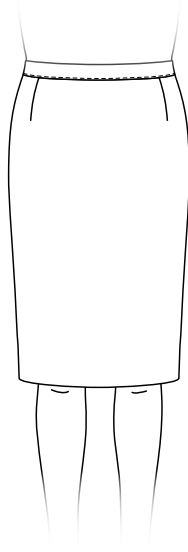
box pleats on the vertical seams

Code

RED

RED line - Flared skirt, bias cut, front and back plain

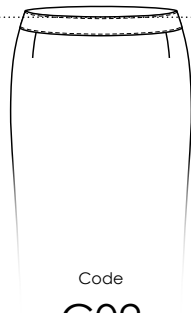




Code
B01
waistposition -
normal



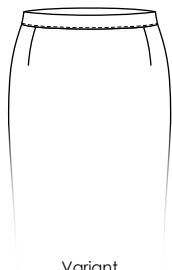
Code
C01
straight waistband
3cm, with extention



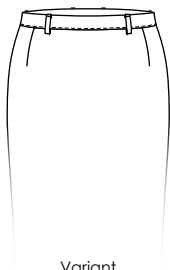
Code
C02
Shaped waistband
4cm, with extention



Code
C03
Without waistband



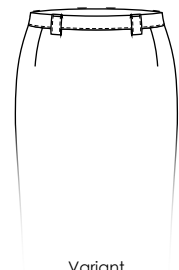
Variant
00
without loops



Variant
01
normal loops



Variant
02
double belt loops

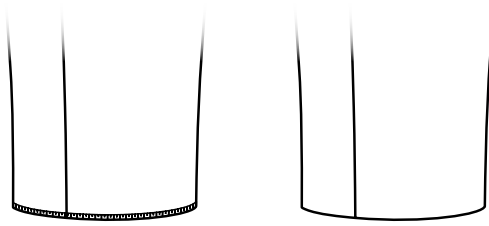


Variant
03
wide belt loops



BOTTOM

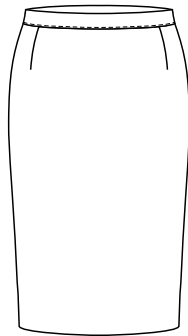
Code
F01
Unfinishes



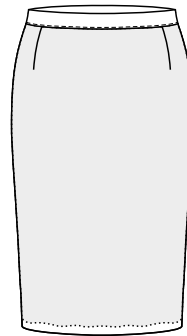
Code
F02
Finished

INSIDE

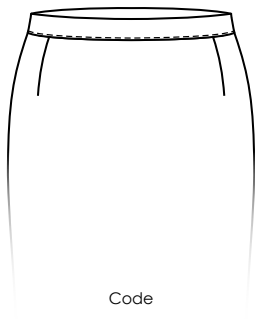
Code
G02
Without lining



Code
G01
With lining

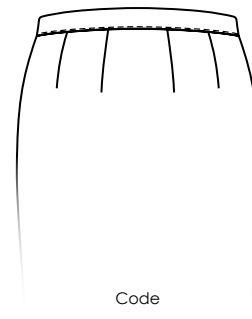


FRONT POCKETS

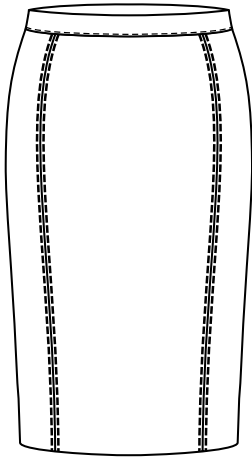


Code
D01
Without pockets

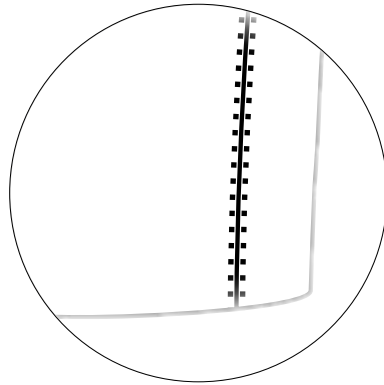
HIP POCKETS



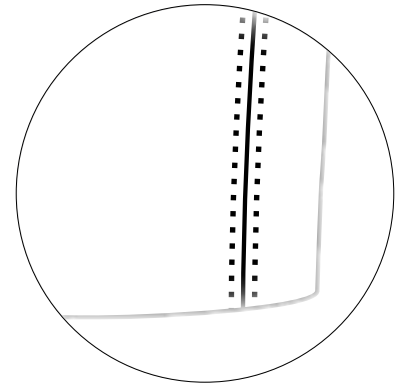
Code
E01
Without pockets



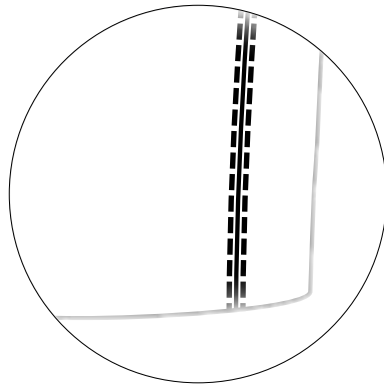
Skirt - vertical seam's stitching



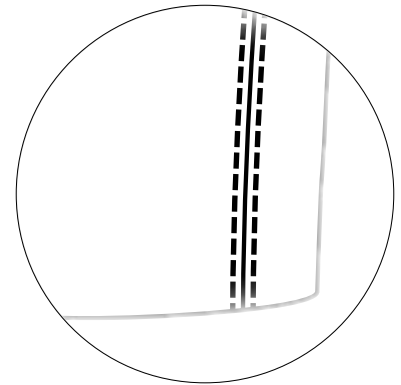
Code
H02
HSE 1 mm



Code
H03
HSE 6 mm



Code
H04
Top stitch 2 mm



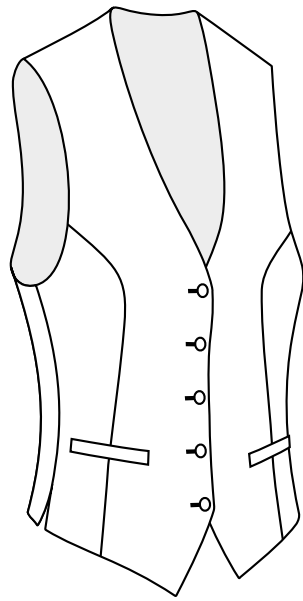
Code
H05
Top stitch 5 mm

*For the contrasts you can choose the colour of HSE * or stitching * from the lining colour card.*

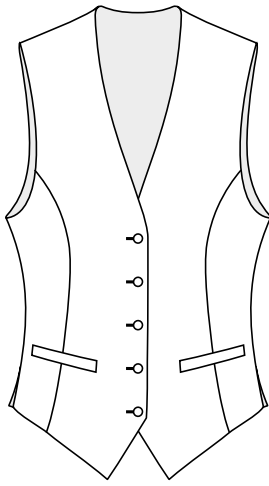
More options:

- HH Hook instead of button on waistband
- SV Special embroidery
(Transfer file (pdf, jpg) + info about size, positions and colour)





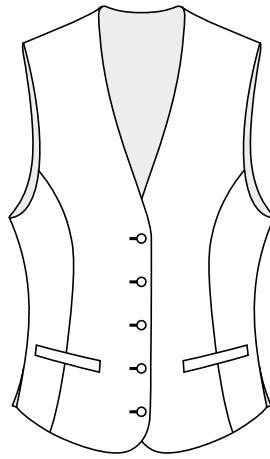
Code
BLU
BLUE line



Code

A01

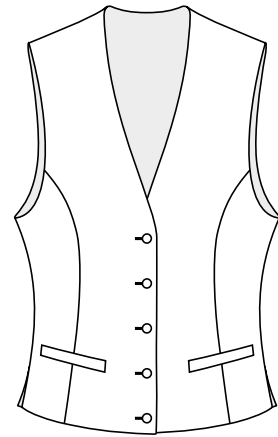
SB, 5 buttons, with points



Code

A02

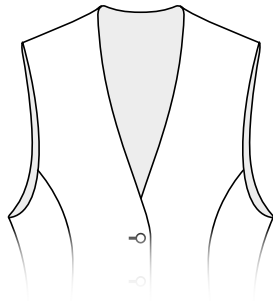
SB, 5 buttons, round bottom



Code

A03

SB, 5 buttons, straight bottom



Variant

00

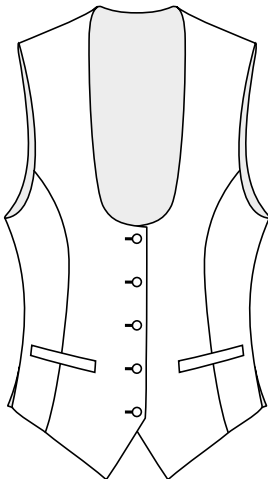
without lapel



Variant

01

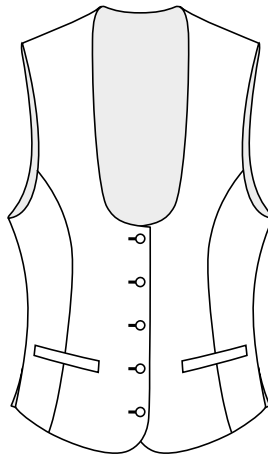
with lapel



Code

A04

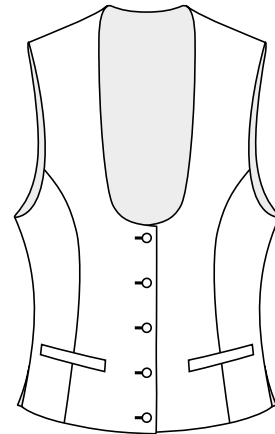
SB, 5 buttons, round neckline, with points



Code

A05

SB, 5 buttons, round neckline, round bottom

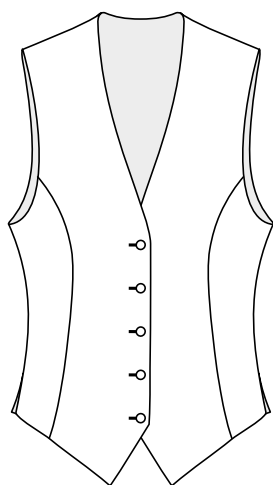


Code

A06

SB, 5 buttons, round neckline, straight bottom

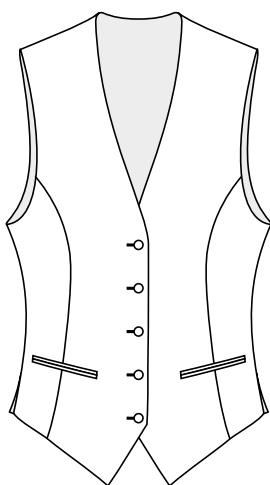




Code

D00

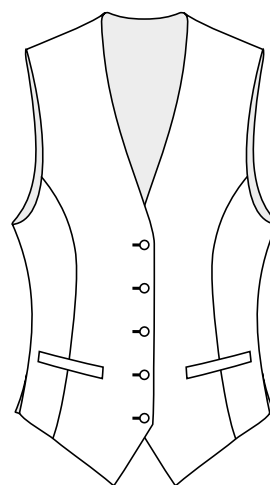
Without pockets



Code

D01

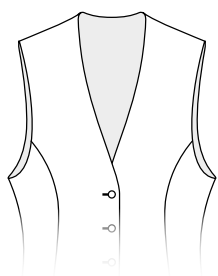
2 jetted pockets



Code

D02

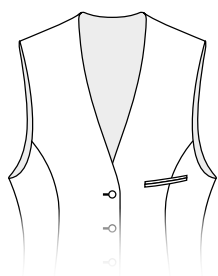
2 welted pockets 1,5 cm



Variant

00

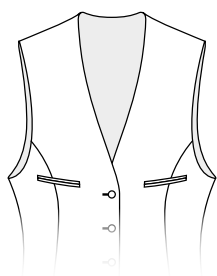
Without breast pocket



Variant

01

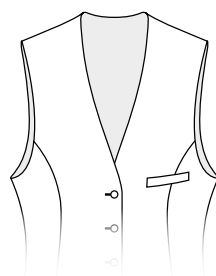
1 jetted breast pocket



Variant

02

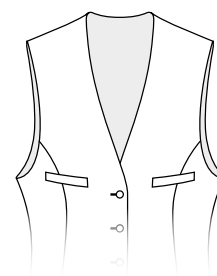
2 jetted breast pockets



Variant

03

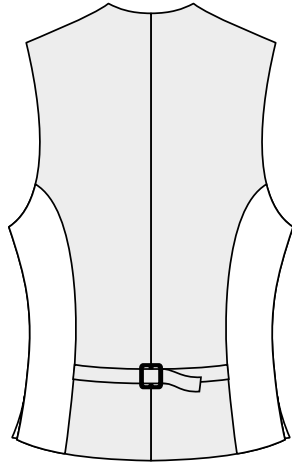
1 breast welted pocket 1,5 cm



Variant

04

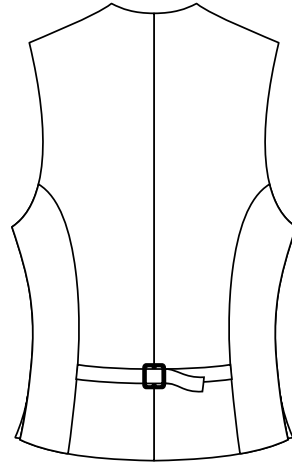
2 breast welted pockets 1,5 cm



Code

E01

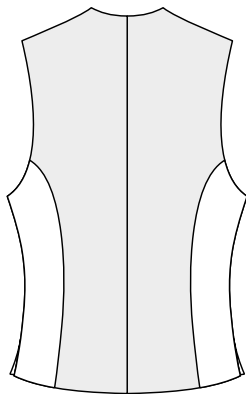
With lining back



Code

E02

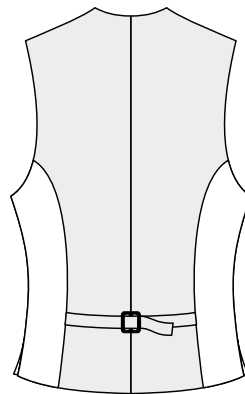
With cloth back



Variant

00

without buckle

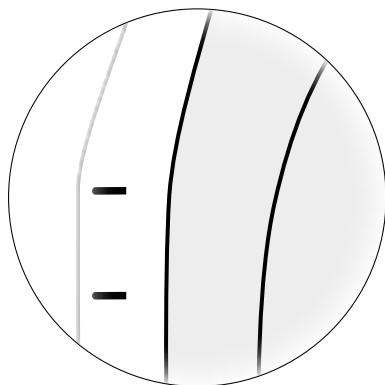
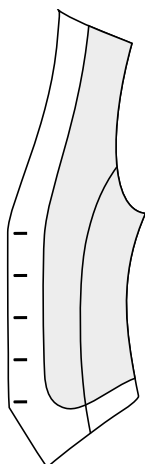


Variant

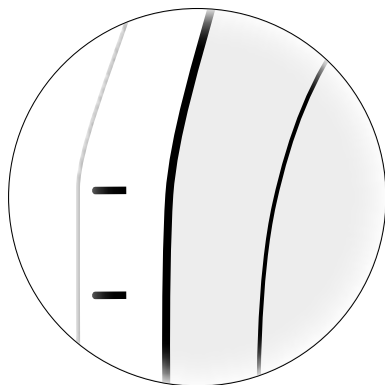
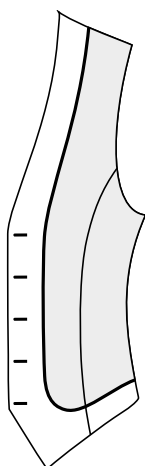
01

with buckle

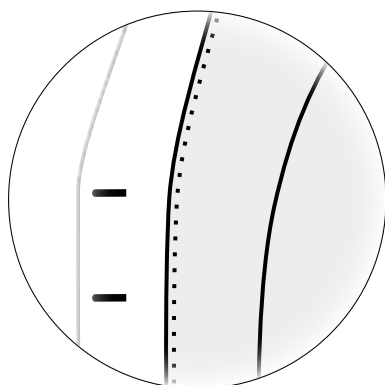
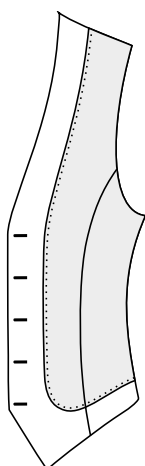




Code
G01
Facing seam -
without stitching

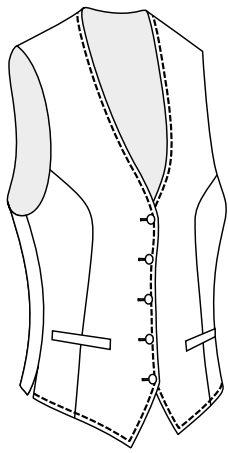


Code
G02
Facing seam -
piping

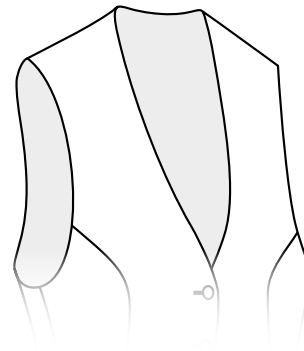


Code
G03
Facing seam -
Columbia

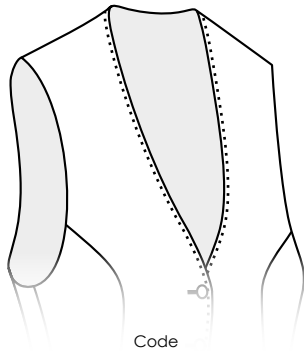
*For contrasts you can choose the colour of piping, inside pocket jettings * and columbia-stitching * from the lining colour card.*



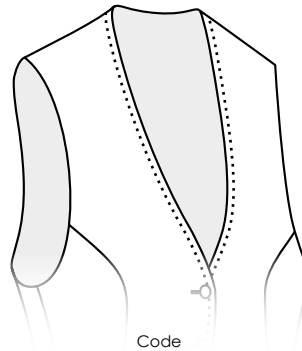
Top stitch / HSE is applied on the edge



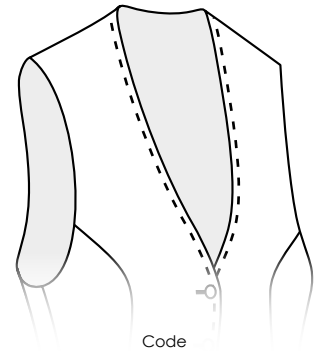
Code
H01
Without stitching



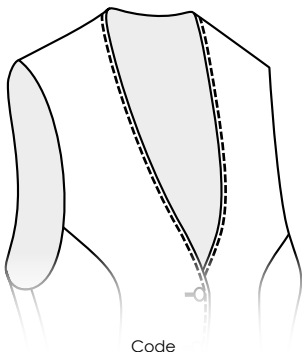
Code
H02
HSE 1 mm



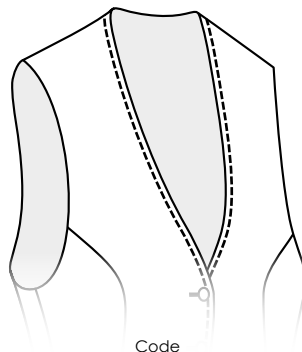
Code
H03
HSE 6 mm



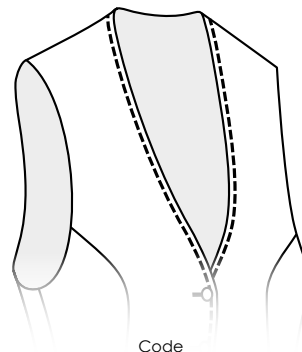
Code
H08
HSE 6 mm, long
stitch



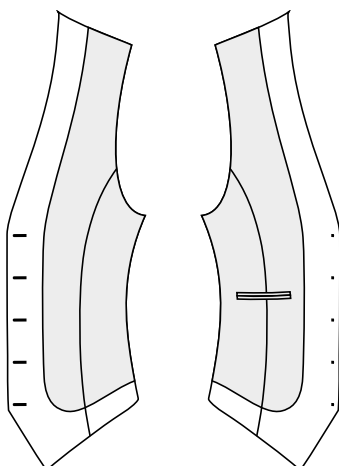
Code
H04
Top stitch 2 mm



Code
H05
Top stitch 5 mm



Code
H07
Top stitch 5 mm,
thick thread



Code
IT
1 inside pocket -
left

More options:

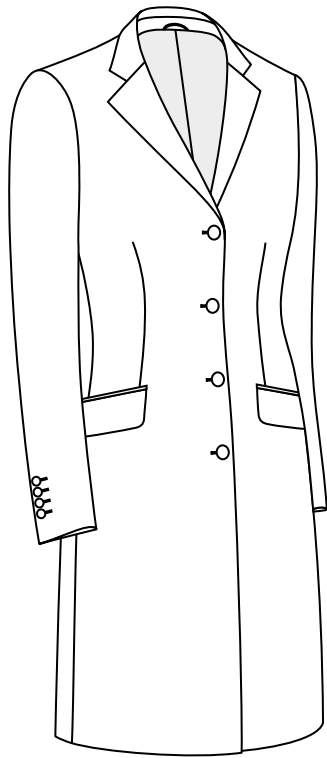
FO Front without buttonholes

SV Special embroidery

(Transfer file (pdf, jpg) + info about size,
positions and colour)

- Contrast - front button holes *

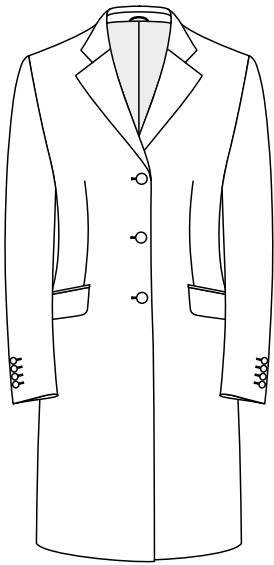




Code

BLU

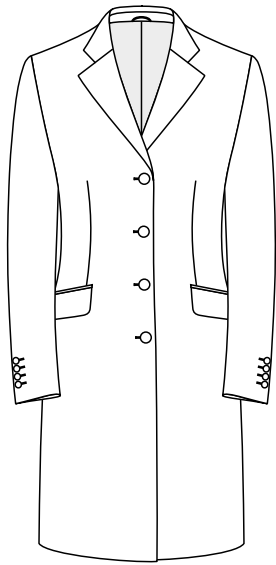
BLUE line



Code

A05

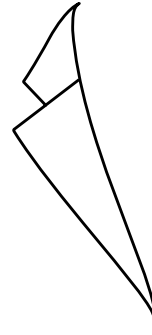
SB, 3 buttons



Code

A06

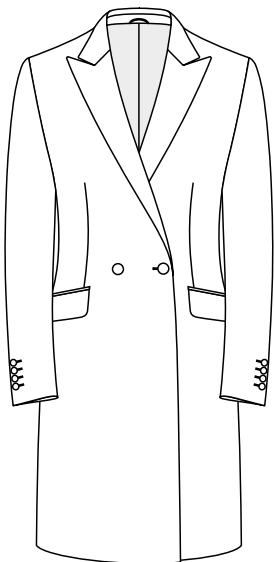
SB, 4 buttons



Variant

01

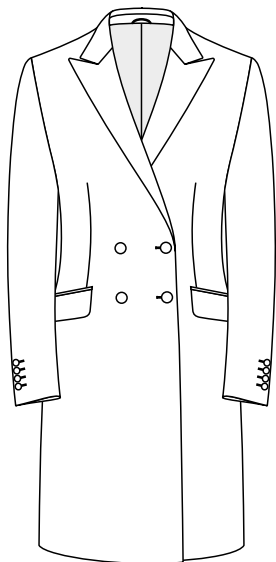
*Notch lapel,
classic*



Code

A07

DB, 2 x 1



Code

A08

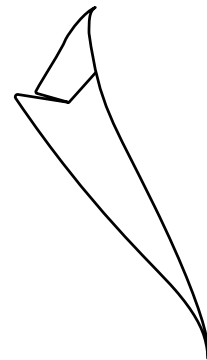
DB, 4 x 2



Code

A09

DB, 6 x 3

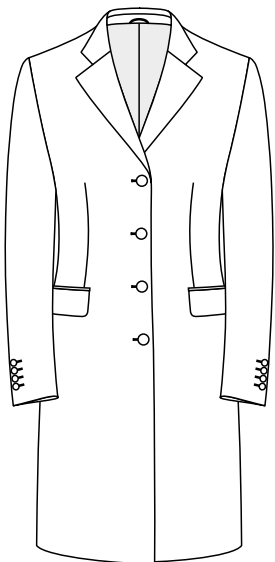


Variant

04

Peak lapel, classic

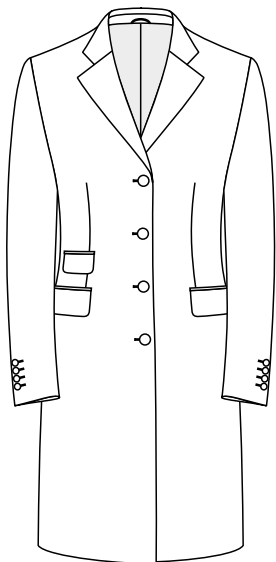




Code

D01

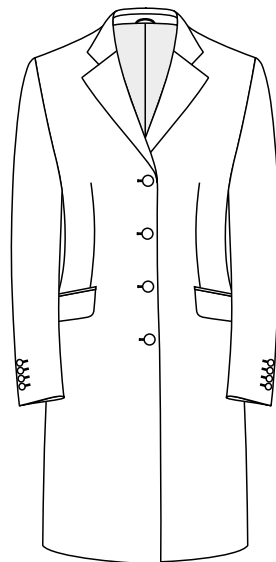
Flap side pockets



Code

D02

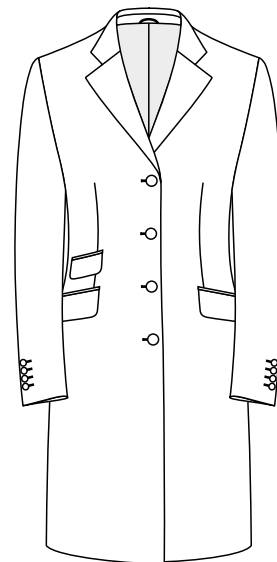
Flap side pockets,
ticket pocket



Code

D03

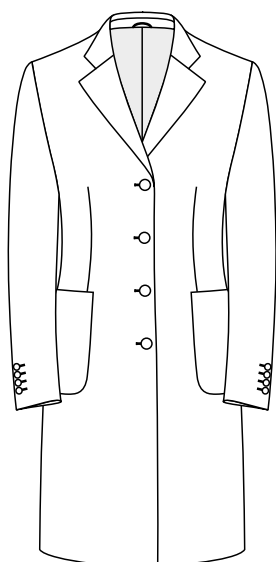
Slant flap side
pockets



Code

D04

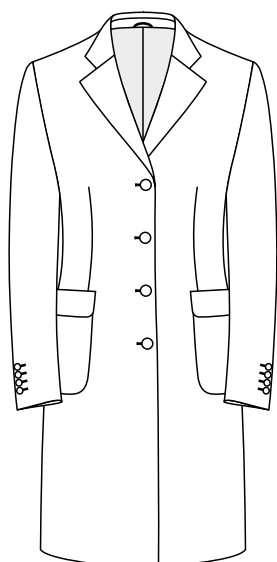
Slant flap side
pockets, ticket
pocket



Code

D09

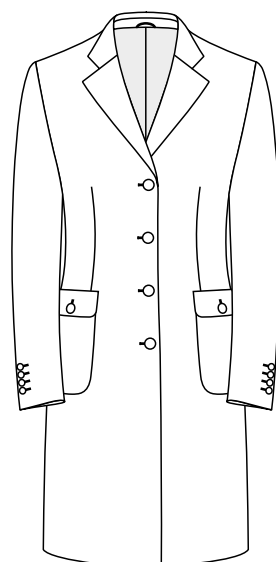
Side patch pockets



Code

D10

Side patch pockets
with flap



Code

D11

Side patch pockets
with flap and
button

Variant

00

Without breast
pocket



Variant

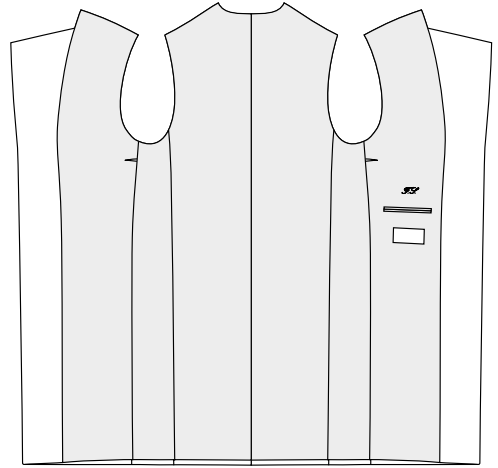
01

Welt breast
pocket

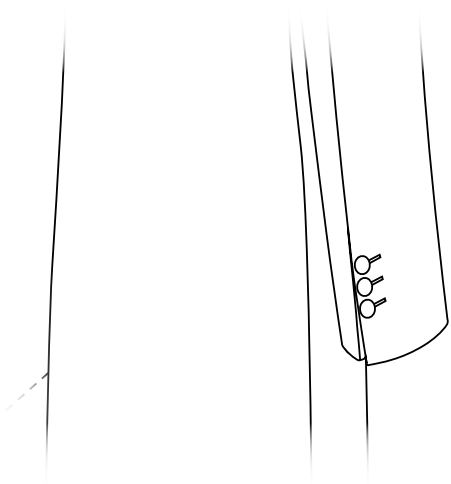




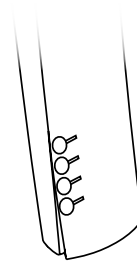
Code
E02
Normal, centre
vent



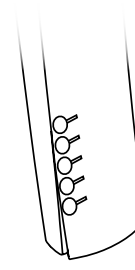
Sham cuff styles



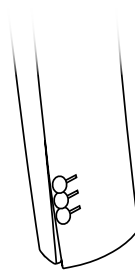
Code / Variant
F01 00
Sham cuff
3 buttons



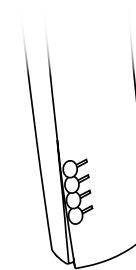
Variant
01
4 buttons



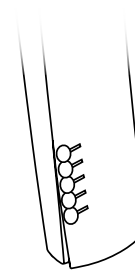
Variant
02
5 buttons



Variant
03
3 kissing buttons



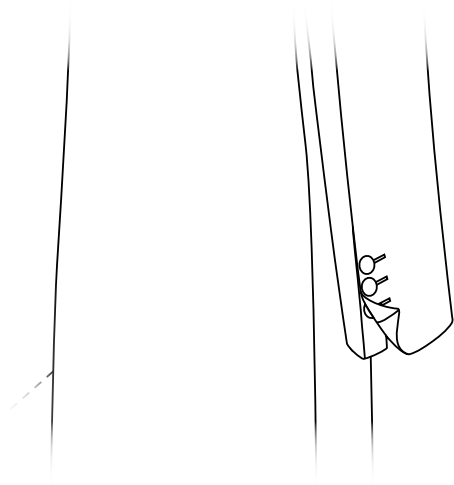
Variant
04
4 kissing buttons



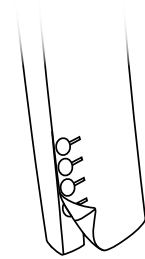
Variant
05
5 kissing buttons



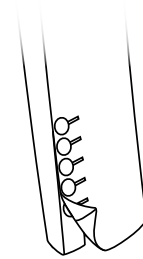
Open cuff styles *



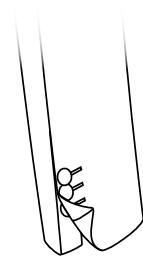
Code / Variant
F02 00
 Real button holes
 3 buttons



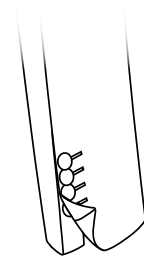
Variant
01
 4 buttons



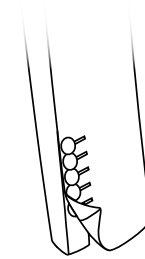
Variant
02
 5 buttons



Variant
03
 3 kissing buttons

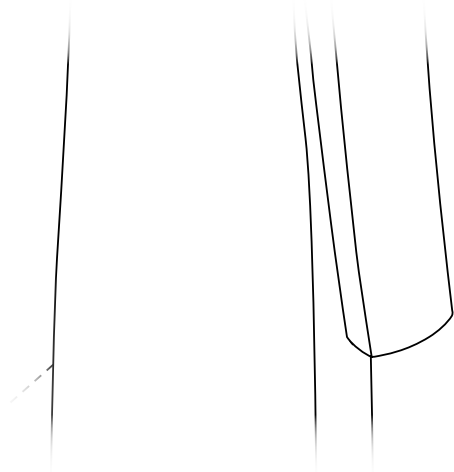


Variant
04
 4 kissing buttons

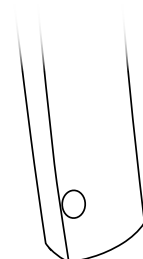


Variant
05
 5 kissing buttons

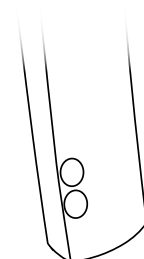
Closed seams styles



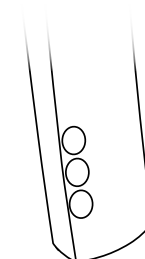
Code / Variant
F03 09
 Without cuff
 Without button holes



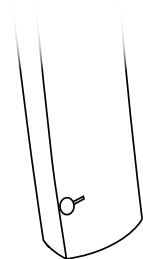
Variant
00
 1 big button



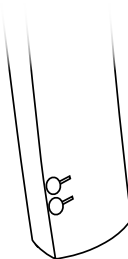
Variant
01
 2 big buttons



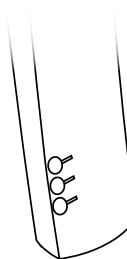
Variant
02
 3 big buttons



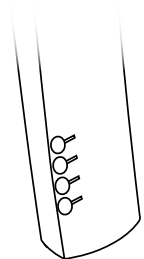
Variant
04
 1 small button



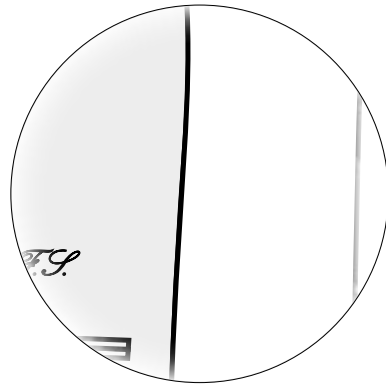
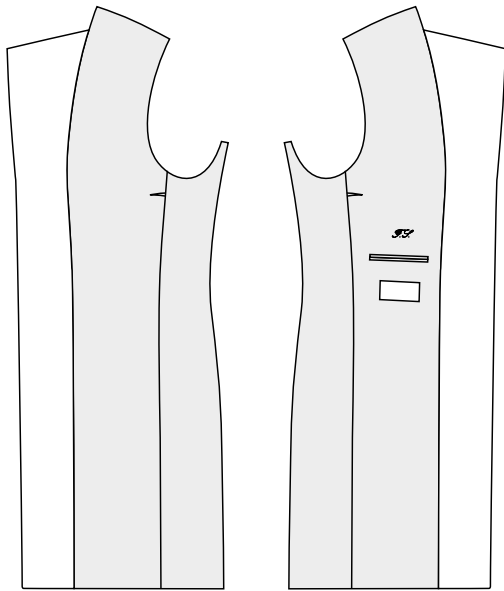
Variant
05
 2 small buttons



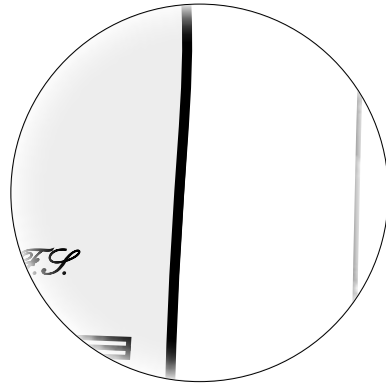
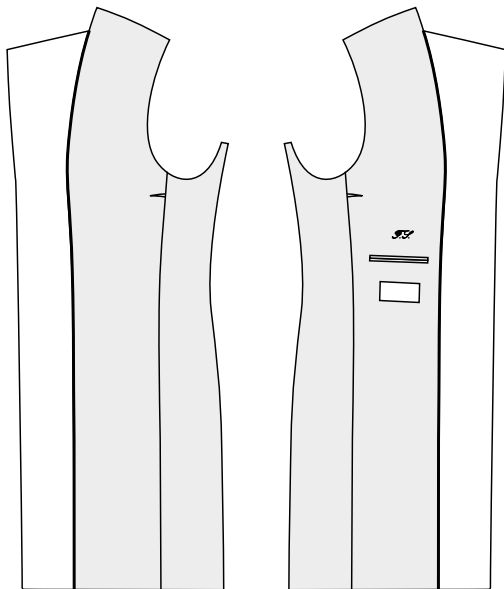
Variant
06
 3 small buttons



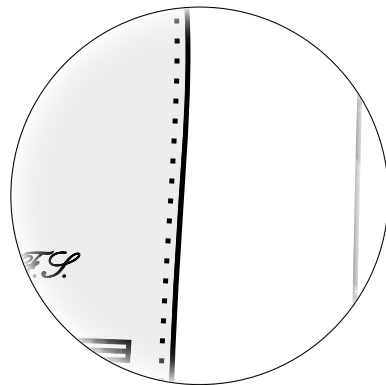
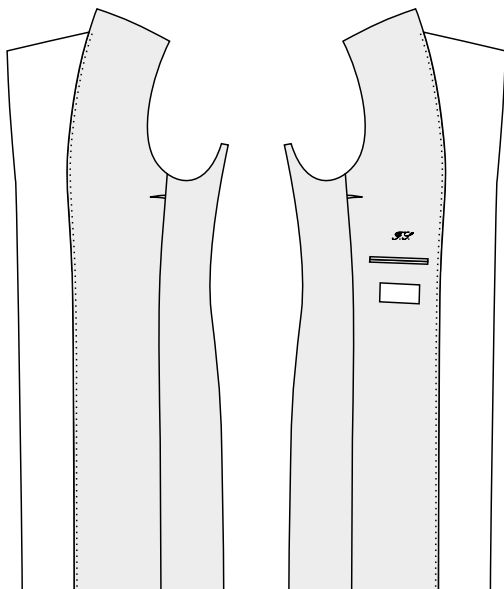
Variant
07
 4 small buttons



Code
G01
 Straight facing, in
 breast pocket left



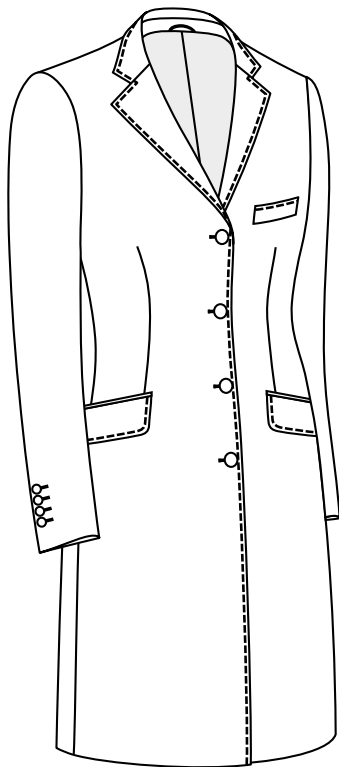
Code
G02
 Straight facing, piping,
 inside pocket left



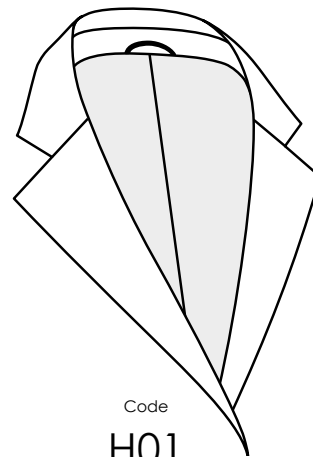
Code
G03
 Straight
 facing, Columbia, in
 br.pock.left

*For contrasts you can choose the colour of piping, inside pocket jettings * and columbia-stitching * from the lining colour card.*

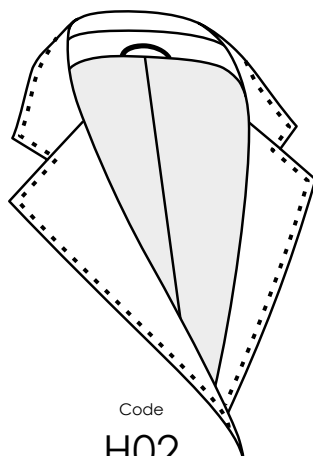




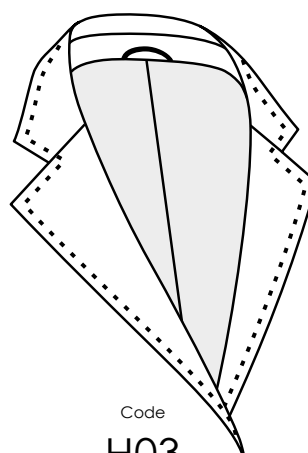
Top stitch / HSE is applied on the edge



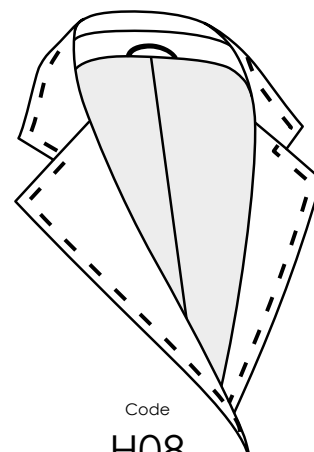
Code
H01
Without stitching



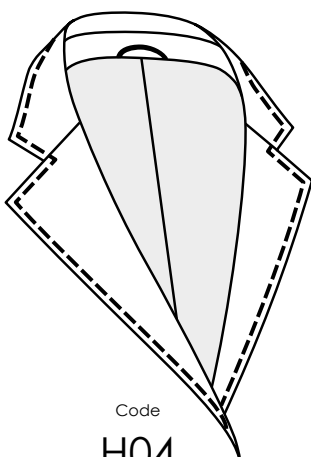
Code
H02
HSE 1 mm



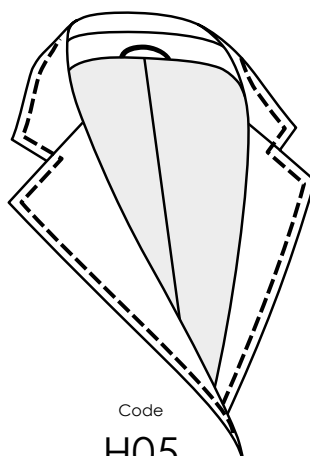
Code
H03
HSE 6 mm



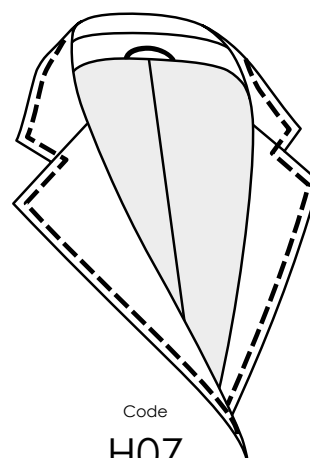
Code
H08
HSE 6 mm, long
stitch



Code
H04
Top stitch 2 mm

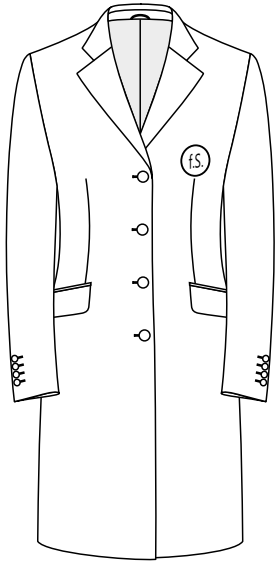


Code
H05
Top stitch 5 mm



Code
H07
Top stitch 5 mm,
thick thread

For the contrasts you can choose the colour of HSE * or stitching * from the lining colour card.



Code

EA

Badge / logo to be fitted (supplied by customer)



Code

LR

Buttonhole - left lapel



Code

RR

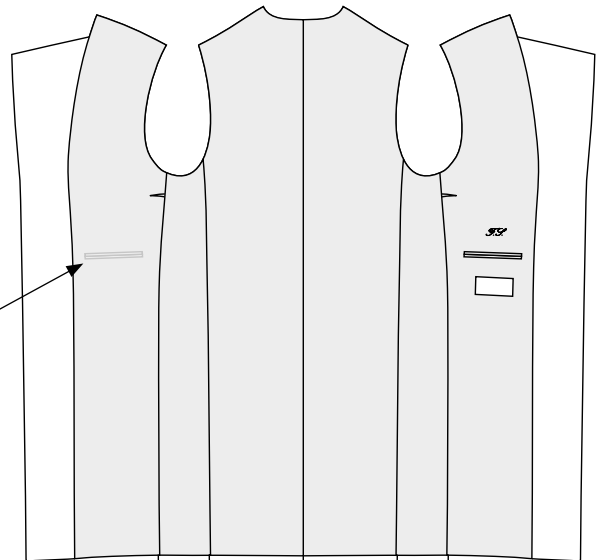
Lapel buttonhole - right



Code

BR

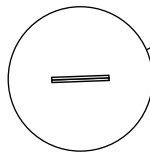
Buttonhole - both lapels



Code

1TB

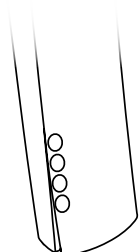
2 inside pockets, left and right



Code

AOO

Sleeves without buttonholes and buttons



Code

AOM

Sleeves without buttonholes and buttons on

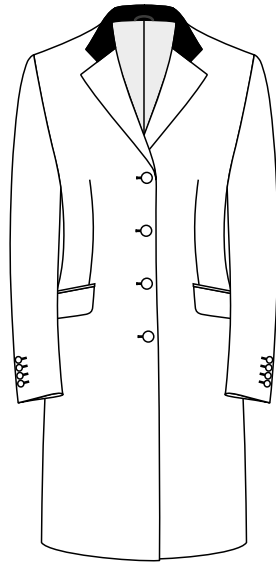
More options:

FO Front without buttonholes

SV Special embroidery

(Transfer file (pdf, jpg) + info about size, positions and colour)





Contrast - collar
*

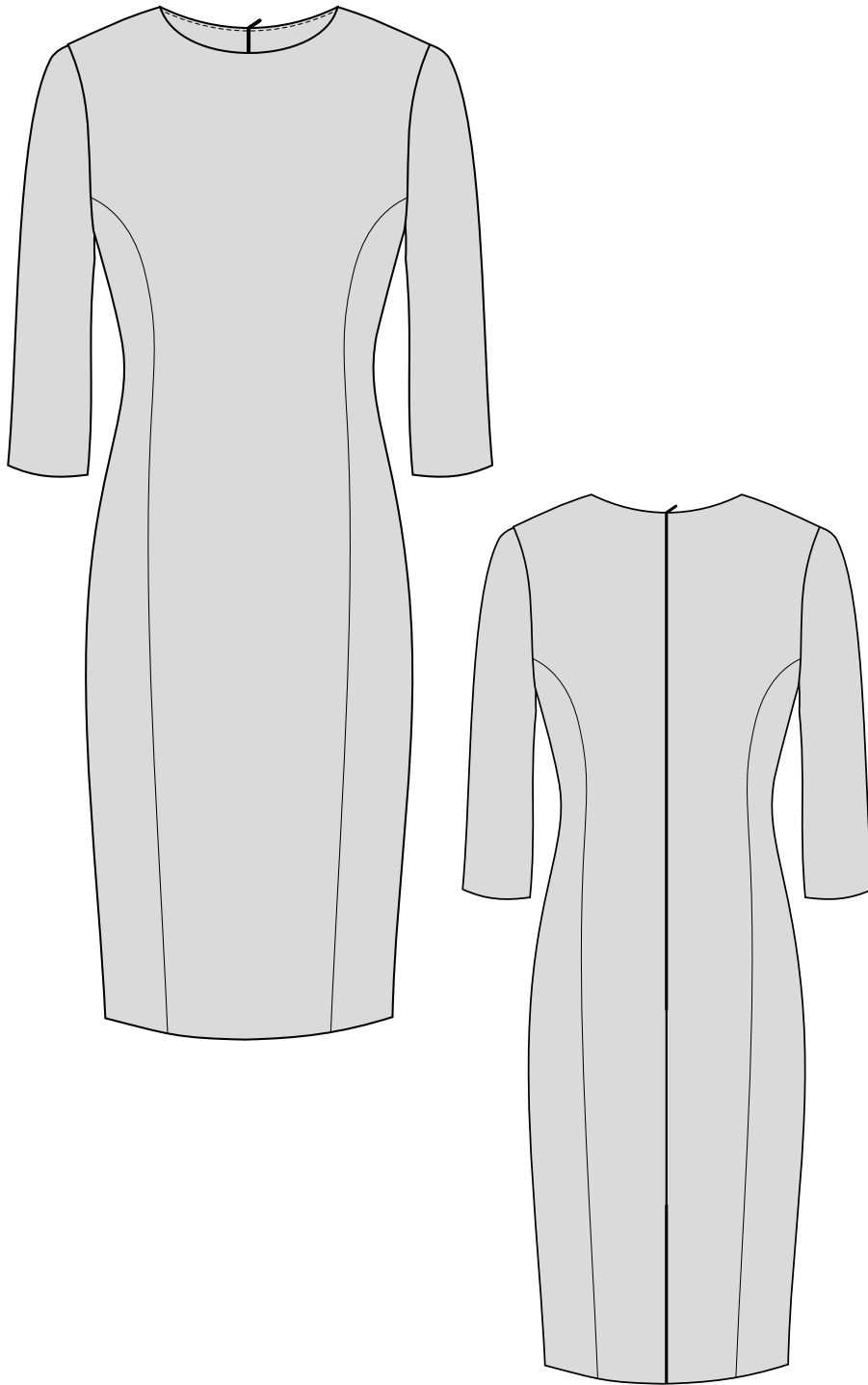
More options:

- Contrast - lapel button hole
- Contrast - front button holes *
- Contrast - 1st sleeve button hole from bottom *
- Contrast - 2nd sleeve button hole from bottom *
- Contrast - sleeve all button holes *
- Contrast - monogram
- Contrast - jettings inside pockets *
- Contrast - Undercollar *
- Contrast - sleeve lining
- Wooden hanger *

Code

BLU

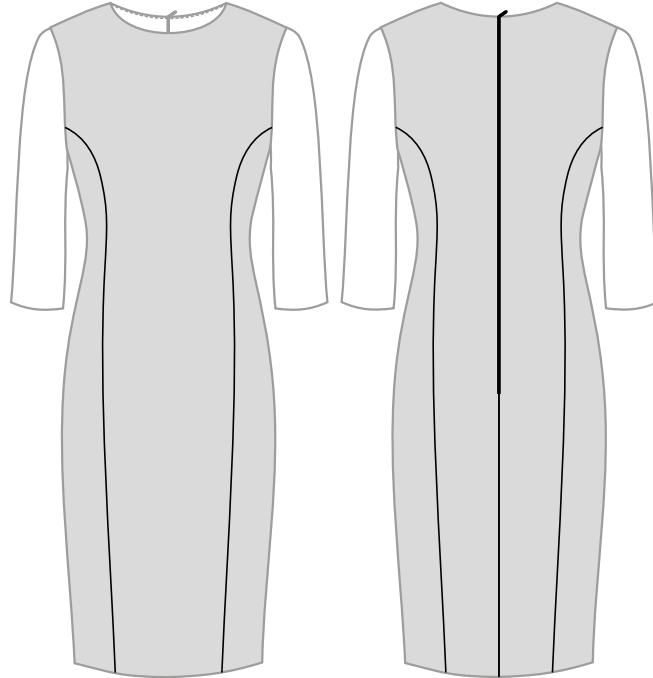
BLUE line - B silhouette



Code

A041

Front and back part with princess
seam, seam in centre back



Variant

00

Without vent

Variant

02

*Vent in the right front
seam*

Variant

04

*Vent in both front
seams*

Variant

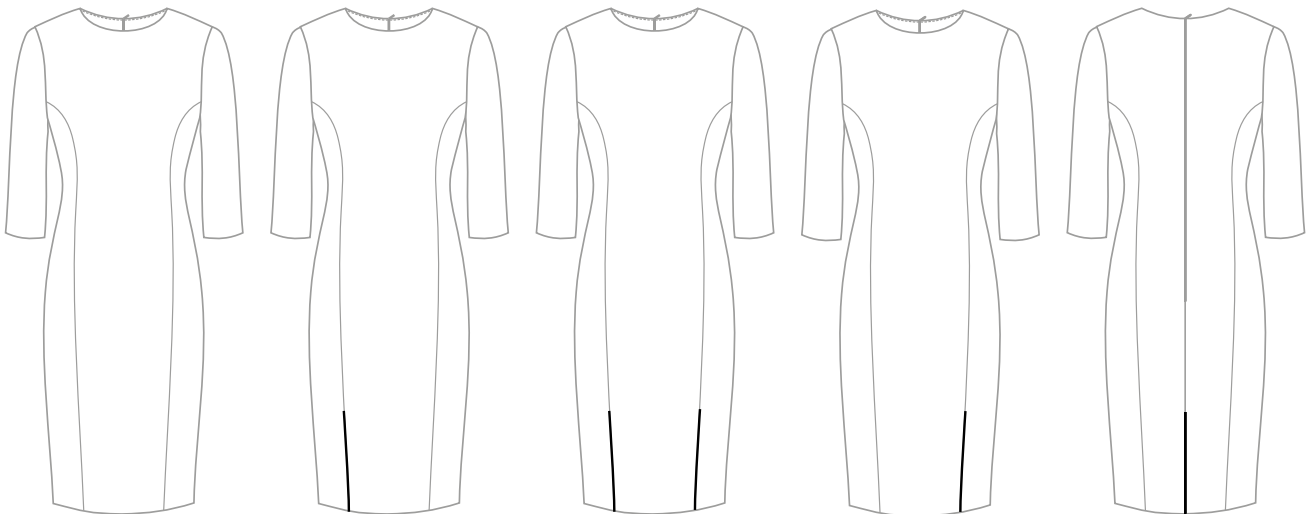
06

*Vent in the left front
seam*

Variant

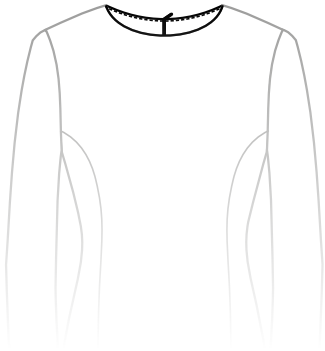
07

*Vent in centre back
seam*



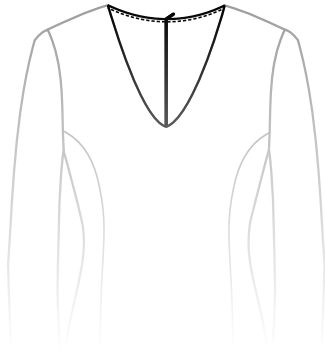
Code
B01

Crew neck



Code
B02

V-neck



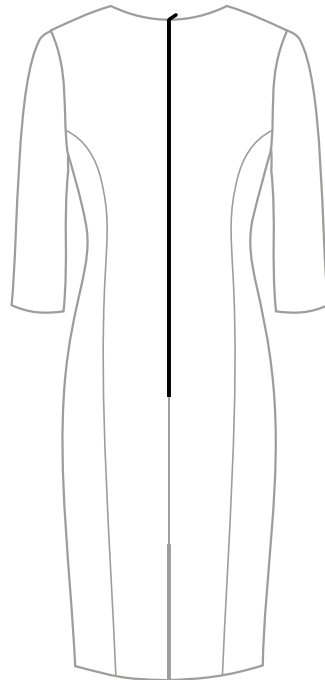
Code
B03

Bateau neckline



Code
B04

Square neckline



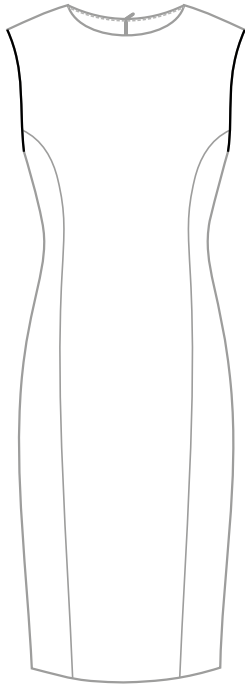
Code
C03

Zip closure in centre back



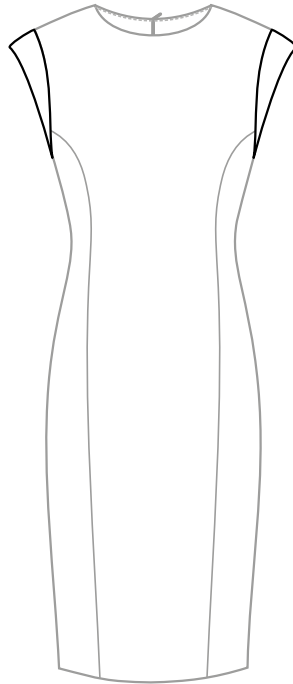
Code
F00

Sleeveless



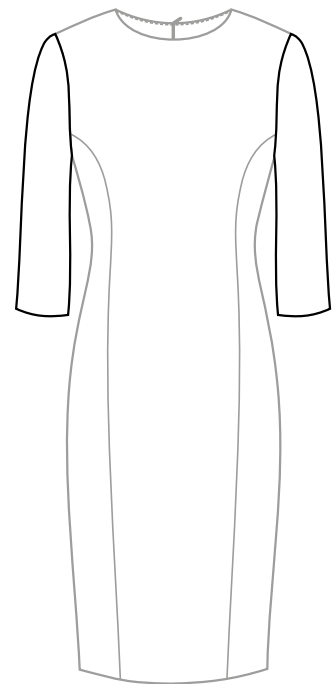
Code
F02

Mini sleeve (caped sleeve)



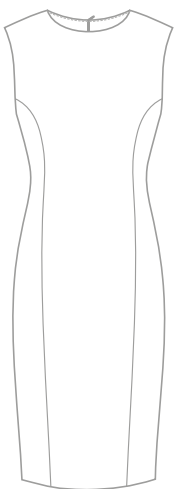
Code
F03

Crown sleeves



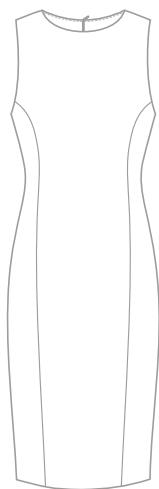
Variant
05

Classical armhole



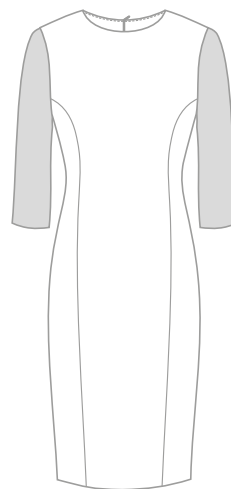
Variant
06

American armhole



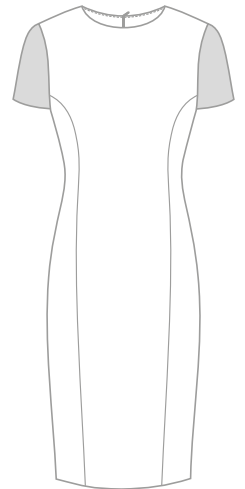
Variant
02

3/4 sleeve



Variant
03

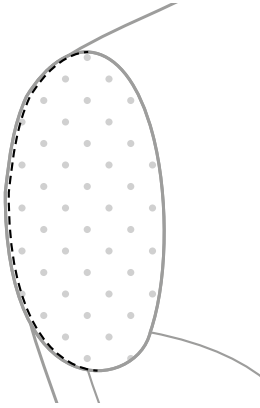
Short sleeve



Code

H00

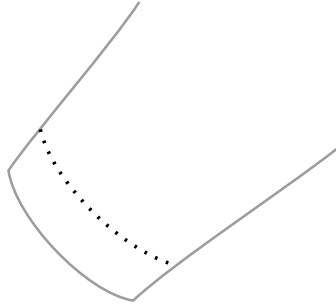
Without sleeve, armhole finished



Code

H02

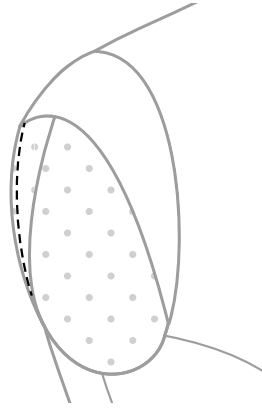
Hem with blind stitching



Code

H03

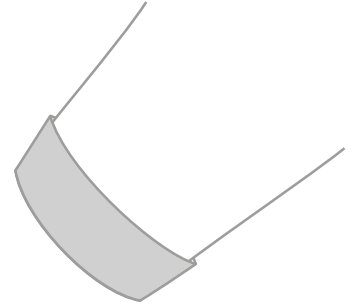
Finished with lining



Code

H04

Turn up



Code

K03

Body with lining





MADE TO MEASURE