



SUIT

MADE TO MEASURE

| | |
|--------|------------------|
| JACKET | MODEL |
| | TYPE |
| | BASIC |
| | BACK |
| | POCKETS |
| | CUFFS |
| | STITCHING |
| | STYLE OPTIONS |
| | MATERIAL OPTIONS |

| | |
|----------|------------------|
| TROUSERS | MODEL |
| | TYPE |
| | BASIC |
| | WAISTBAND |
| | FRONT POCKETS |
| | HIP POCKETS |
| | BOTTOM |
| | STYLE OPTIONS |
| | MATERIAL OPTIONS |

| | |
|--------|-------------|
| SHORTS | ALL OPTIONS |
|--------|-------------|

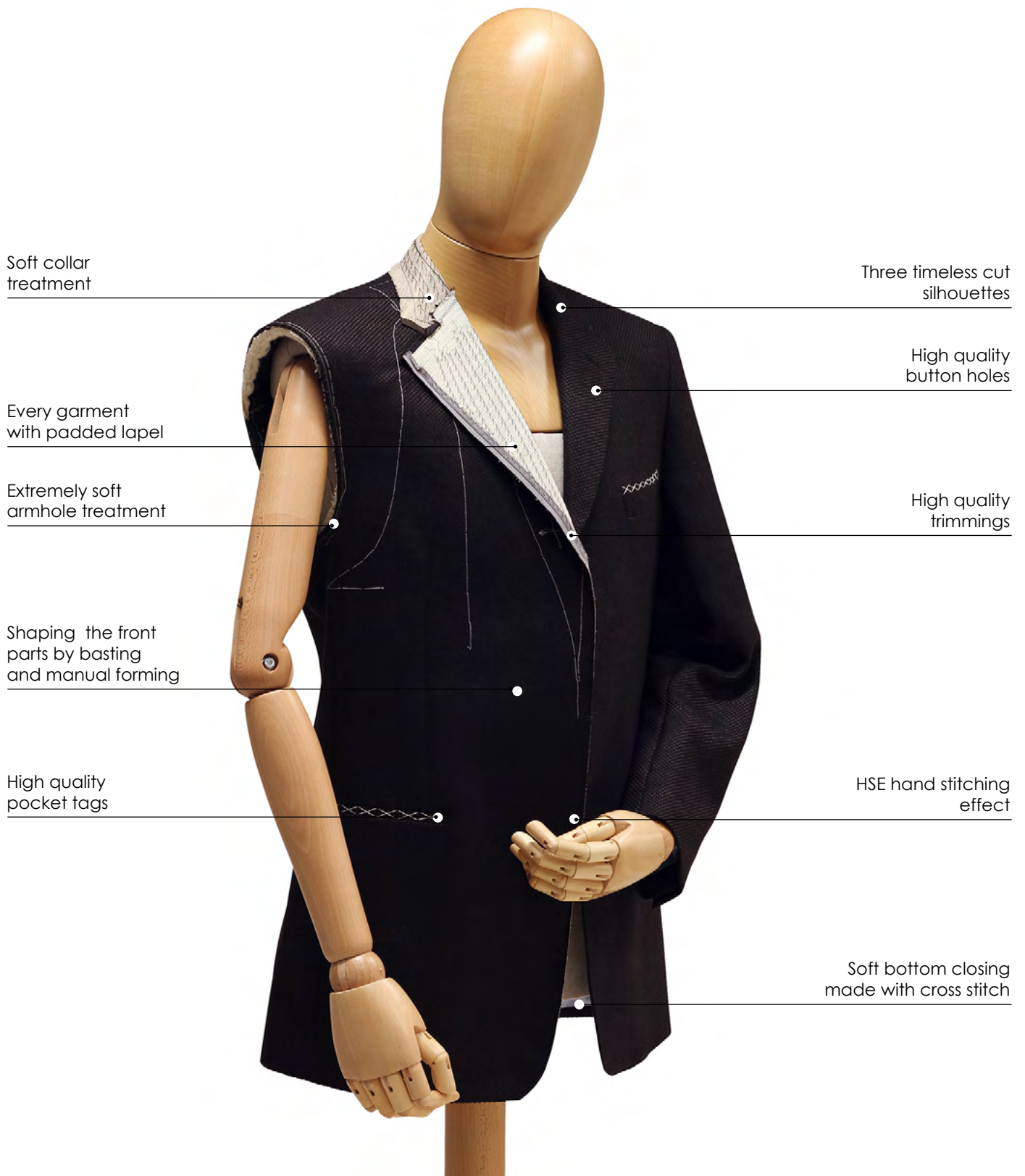
| | |
|-----------|------------------|
| WAISTCOAT | MODEL |
| | TYPE |
| | BASIC |
| | BACK |
| | POCKETS |
| | STITCHING |
| | STYLE OPTIONS |
| | MATERIAL OPTIONS |

| | |
|----------|------------------|
| OVERCOAT | MODEL |
| | TYPE |
| | BASIC |
| | BACK |
| | POCKETS |
| | CUFF |
| | INSIDE |
| | STITCHING |
| | STYLE OPTIONS |
| | MATERIAL OPTIONS |

| | |
|------------|-------------|
| DRESS COAT | ALL OPTIONS |
|------------|-------------|

| | |
|--------------|-------------|
| MORNING COAT | ALL OPTIONS |
|--------------|-------------|

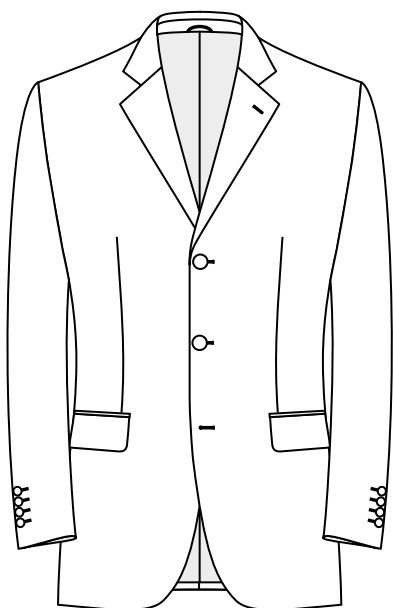
Using sophisticated technology and influenced by Italian tradition our garments use minimal fusing to achieve a soft finish. Our experienced tailors and skilled seamstresses create this unique garment which can only be truly appreciated when worn, giving exceptional comfort and quality.



You can choose between these MODELS / SILHOUETTES:

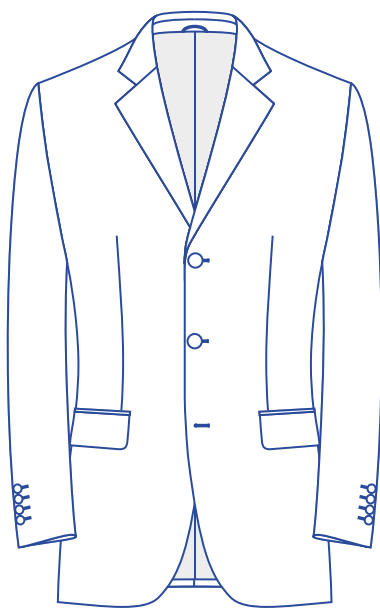
MODEL
BLACK Line

Comfortable cut
Wider silhouette
Lower armhole
Straight cut



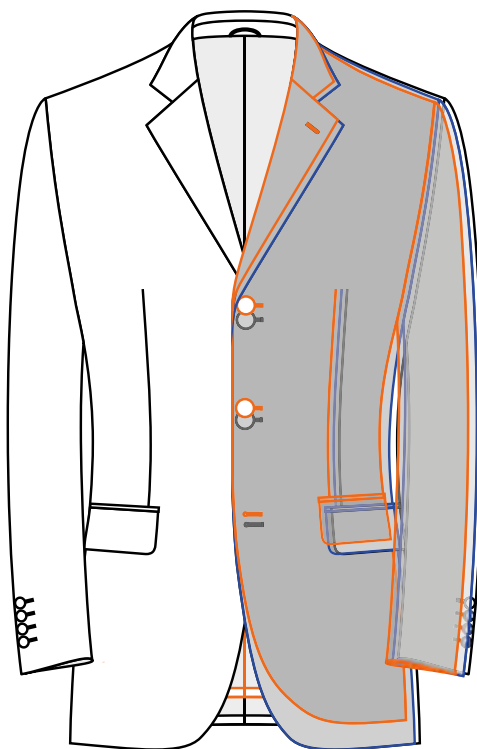
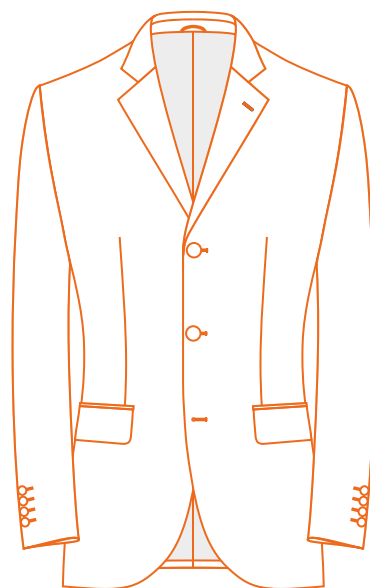
MODEL
BLUE Line

Classic cut
Slim silhouette
Higher armhole
Fitted cut



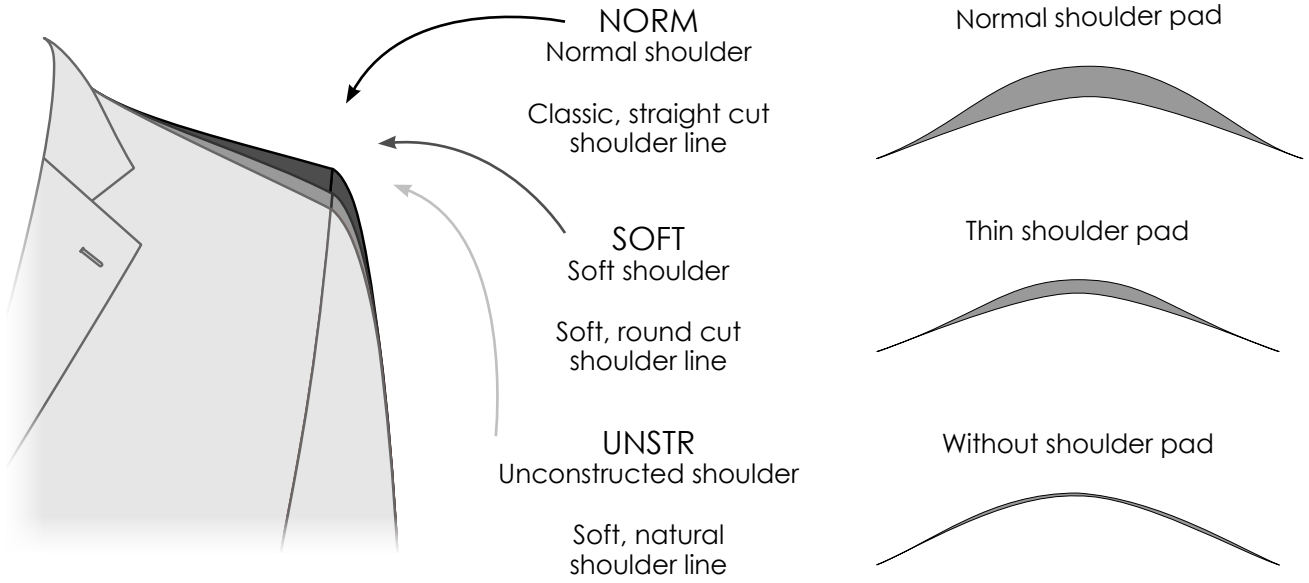
MODEL
ORANGE Line

Trendy cut
Narrow silhouette
Higher armhole
Slim sleeve
Fitted cut

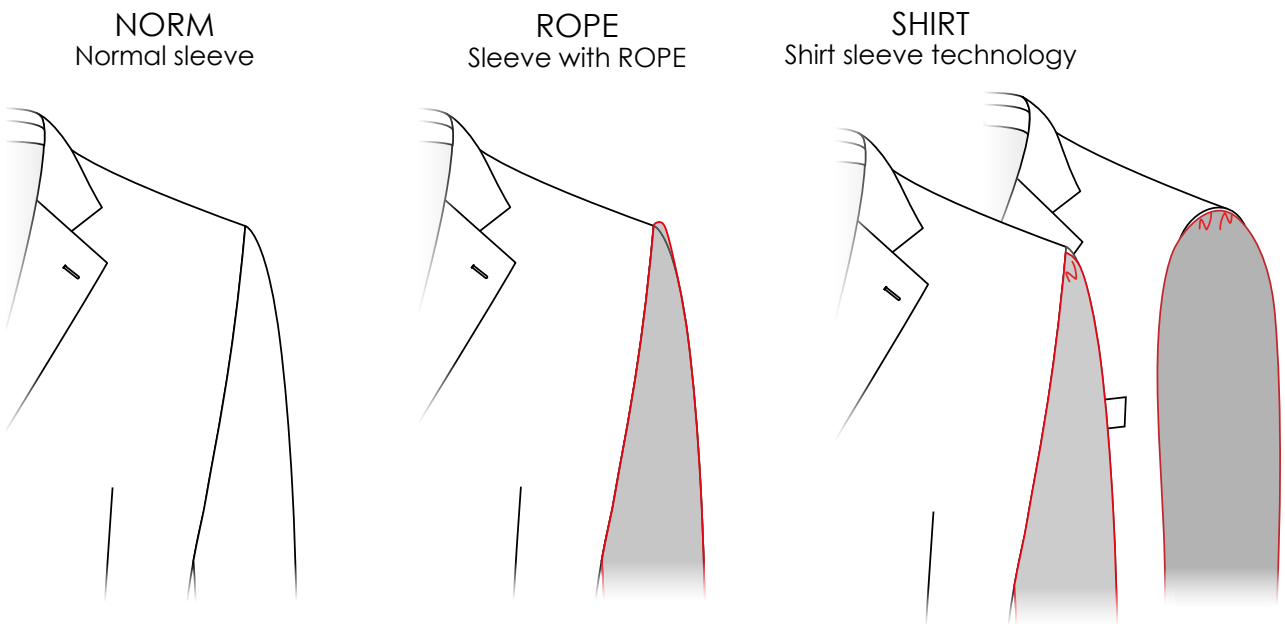


Silhouettes - Comparison

Next you decide the SHOULDER SHAPE:



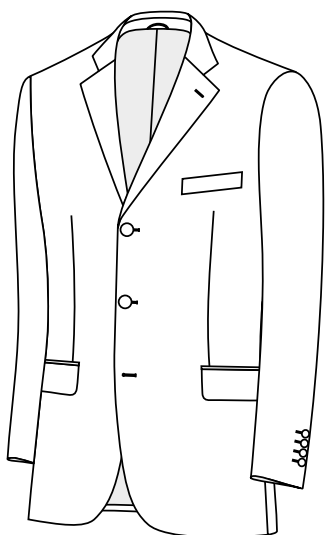
Finally you determine the SLEEVE CROWN:



Available combinations:

| | BLACK Line | | | BLUE Line | | | ORANGE Line | | |
|------|------------|-------|-------|-----------|-------|-------|-------------|------|-------|
| | NORM | ROPE | SHIRT | NORM | ROPE | SHIRT | NORM | ROPE | SHIRT |
| NORM | BLANN | BLANR | X | BLUNN | BLUNR | BLUNS | X | X | X |
| SOFT | BLASN | BLASR | X | BLUSN | BLUSR | BLUSS | ORASN | X | ORASS |

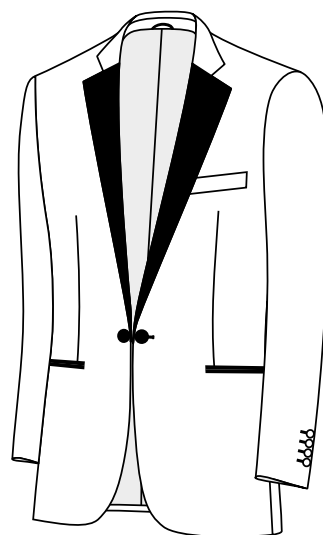




Code

1N

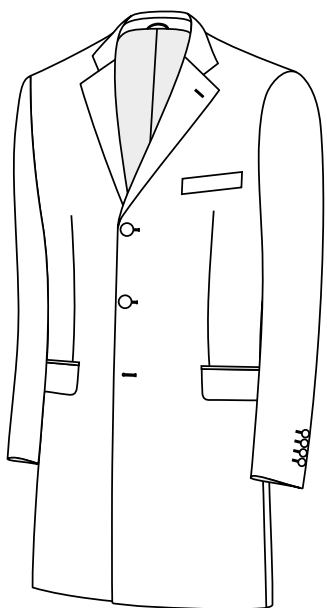
Normal Jacket



Code

1S *

Dinner Jacket

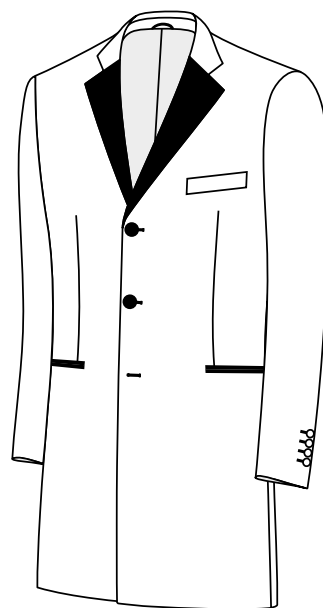


Code

1L

Long Jacket

Normal length
plus 11 cm



Code

1LS *

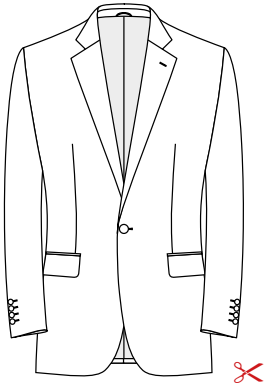
Long Dinner Jacket

Normal length
plus 11 cm

* Labelling for options with surcharge

2I / 2A / 2B - Lapel width ca. 9 cm

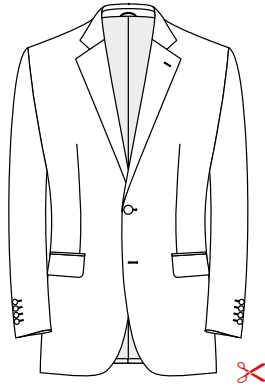
2J - Lapel width ca. 8 cm



Code

2I

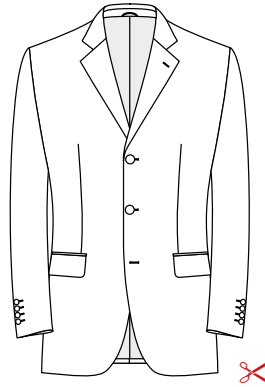
SB, 1 button



Code

2A

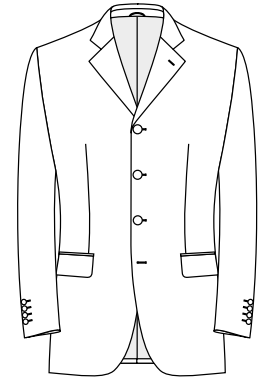
SB, 2 buttons



Code

2B

SB, 3 buttons



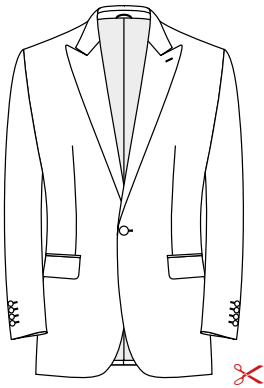
Code

2J

SB, 4 buttons

2K / 2M - Lapel width ca. 9,5 cm

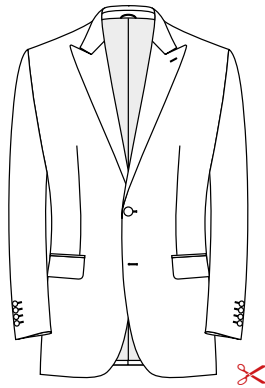
2N / 2NN - Lapel width ca. 9 cm



Code

2K

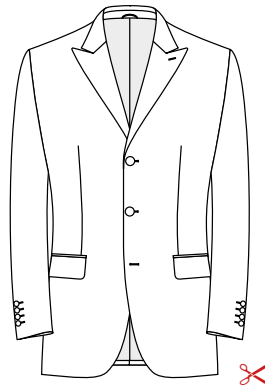
SB, 1 button, peak lapel



Code

2M

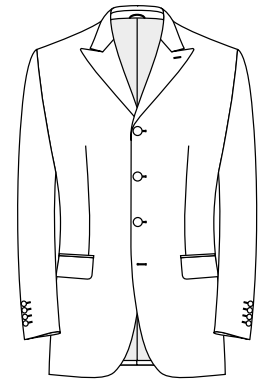
SB, 2 buttons, peak lapel



Code

2N

SB, 3 buttons, peak lapel

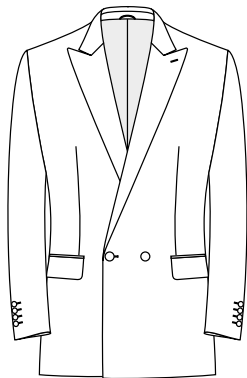


Code

2NN

SB, 4 buttons, peak lapel

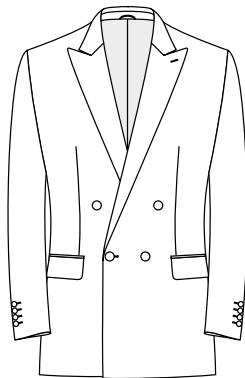
2C4 / 2C2 / 2C1 - Lapel width ca. 9,5 cm



Code

2C4

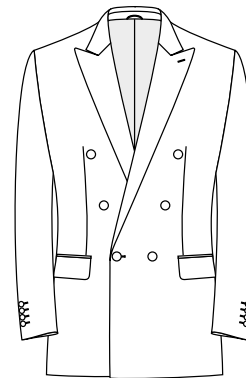
DB, 2 x 1



Code

2C2

DB, 4 x 1



Code

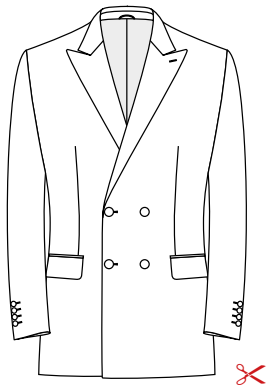
2C1

DB, 6 x 1

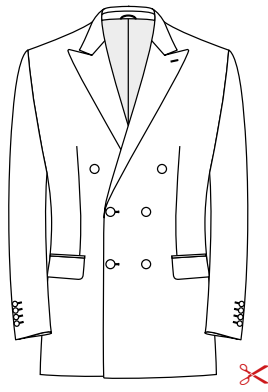
Available with Full Canvas variant



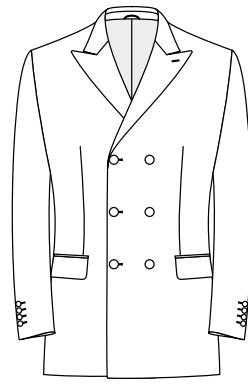
2D4 / 2D1 - Lapel width ca. 10 cm



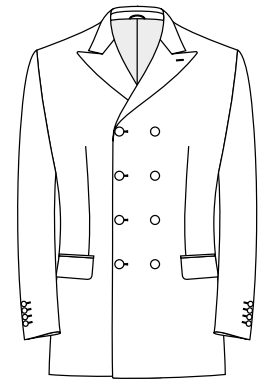
Code
2D4
DB, 4 x 2



Code
2D1
DB, 6 x 2

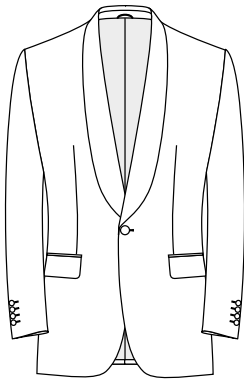


Code
2L1
DB, 6 x 3

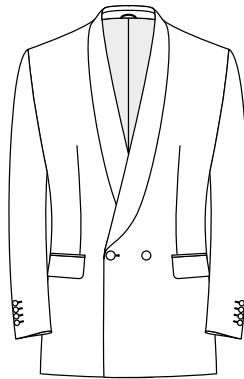


Code
2LL1
DB, 8 x 4

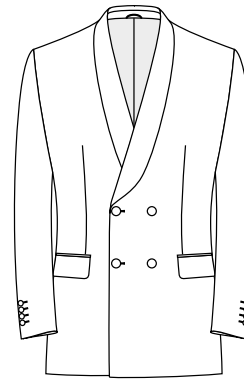
2E / 2P / 2Q - Lapel width ca. 5 cm



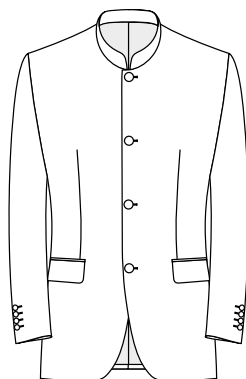
Code
2E
SB, 1 button, shawl lapel



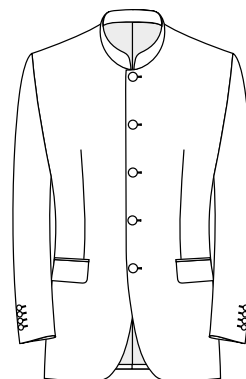
Code
2P
DB, 2 x 1, shawl lapel



Code
2Q
DB, 4 x 2, shawl lapel



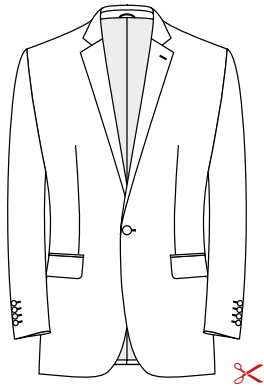
Code
2R
SB, 4 buttons, Nehru



Code
2S
SB, 5 buttons, Nehru

Fashion Lapels

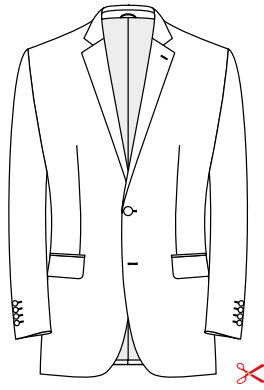
2INL / 2ANL / 2BNL - Lapel width ca. 6,5 cm



Code

2INL

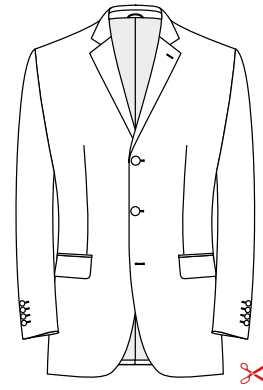
SB, 1 button, narrow
lapel



Code

2ANL

SB, 2 buttons, narrow
lapel

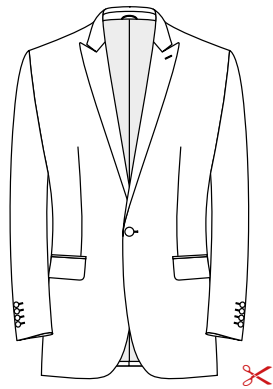


Code

2BNL

SB, 3 buttons, narrow
lapel

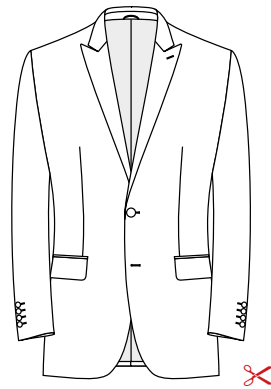
2KNL / 2MNL - Lapel width ca. 7,5 cm



Code

2KNL

SB, 1 button, narrow
peak lapel

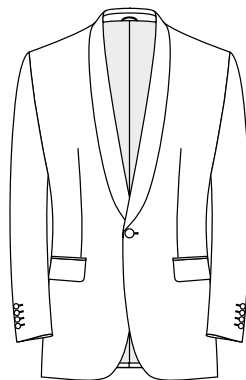


Code

2MNL

SB, 2 buttons, narrow
peak lapel

2ENL - Lapel width ca. 4.5 cm



Code

2ENL

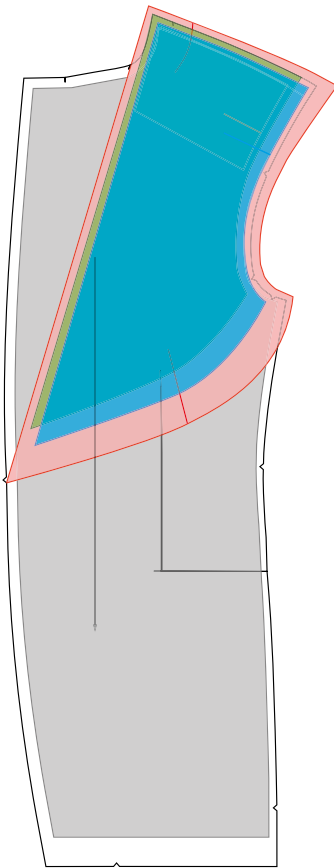
SB, 1 button, narrow
shawl lapel



Construction variants to the front canvas:

All of our suits are made using four layers of canvas, however there are three variations of construction giving different levels of quality and feel.

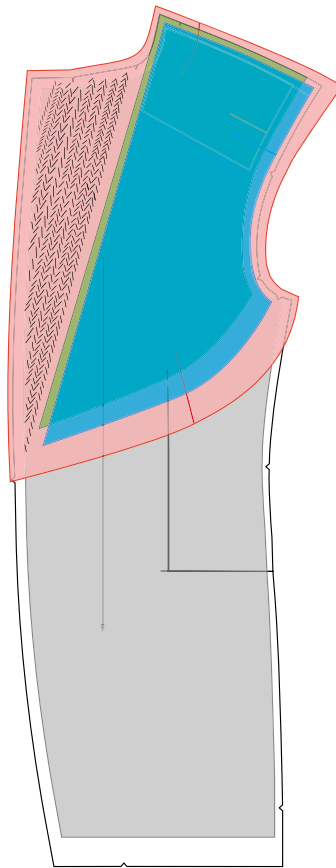
Variant
FB
Fused lapel



This is the EASY construction, used only for our SQ system.

Fused front, chest canvas to lapel break only.

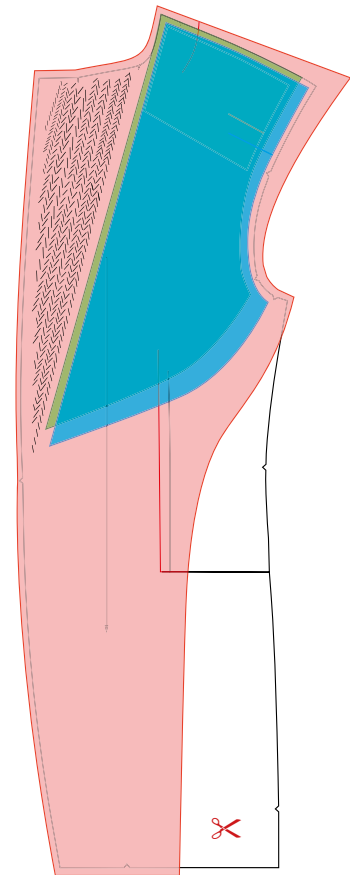
Variant
PB
Padded lapel



Our STANDARD TECHNOLOGY for MTM.

Fused front, chest canvas with padded lapel to help with lapel roll and create more stability.

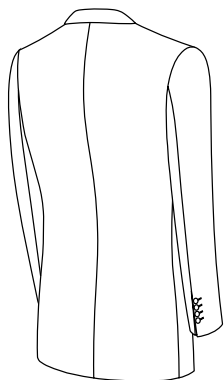
Variant
CB *
Full canvas



The HIGHEST LEVEL TECHNOLOGY for MTM.

No fusing on the front, fully lined using a specially developed Italian canvas with padded lapel. Resulting in a durable garment with a traditional feel.

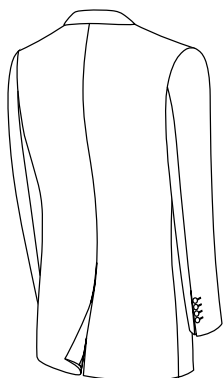
Full lining



Code

3A1

Normal, plain back



Code

3B1

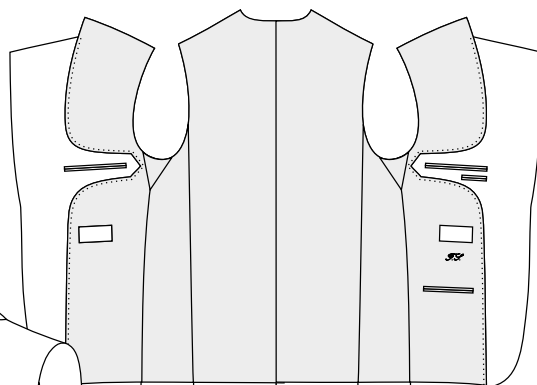
Normal, centre vent



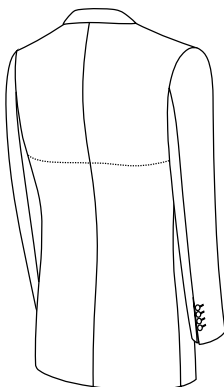
Code

3C1

Normal, side vents



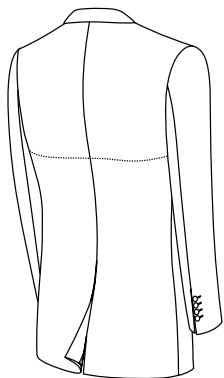
Half lining / Buggy lining



Code

3A2

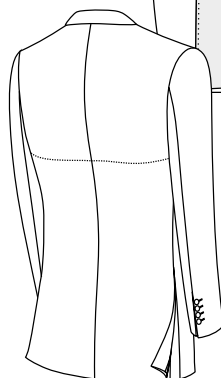
Half-lined, plain back



Code

3B2

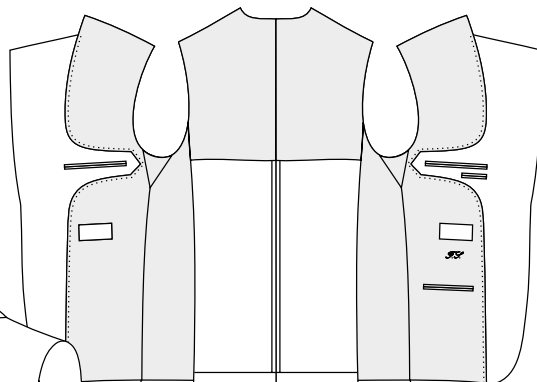
Half-lined, centre vent



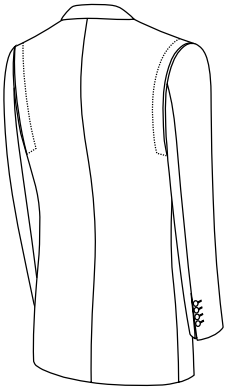
Code

3C2

Half-lined, side vents



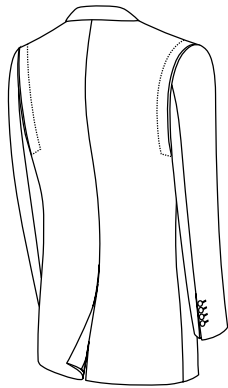
Full lining
Golfers back



Code

3A3

Golfers back, plain back



Code

3B3

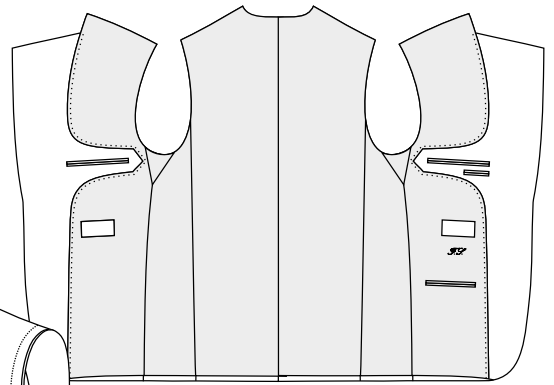
Golfers back, centre vent



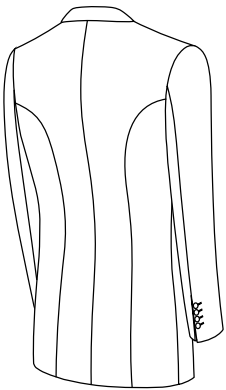
Code

3C3

Golfers back, side vents



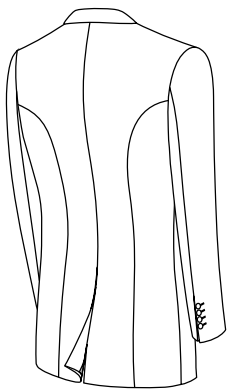
Full lining
Princess seams



Code

3A4

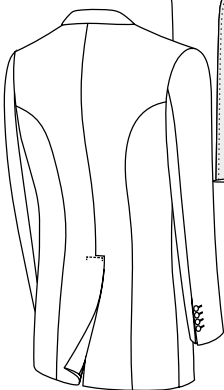
Princess, shaped back, no vent



Code

3B4A

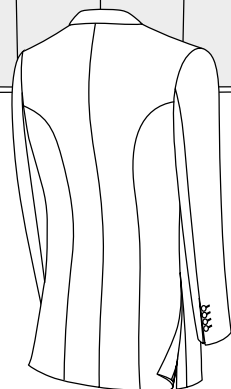
Princess, shaped back, center vent



Code

3B4B

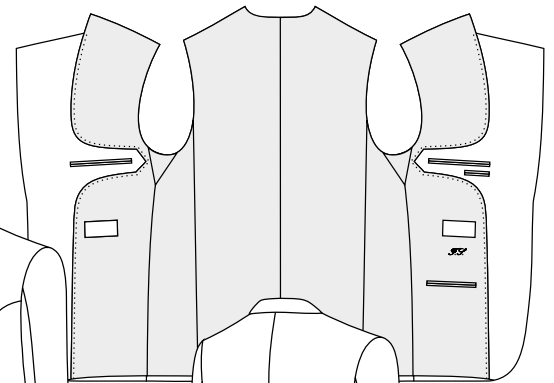
Princess, shaped back, hooked center vent

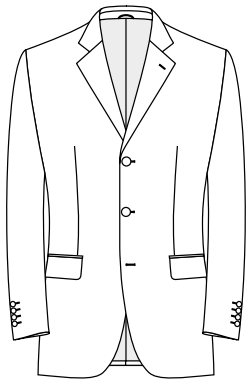


Code

3C4

Princess, shaped back, side vents

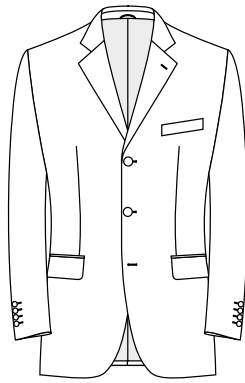




Code

4C1

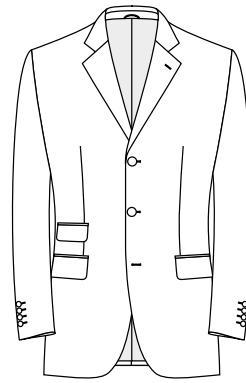
Without breast pocket,
flap side pockets



Code

4C2

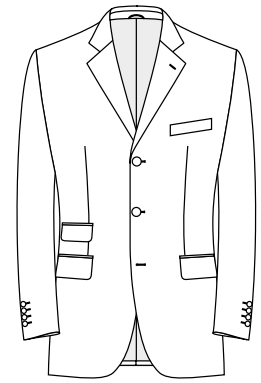
Welt breast pocket, flap
side pockets



Code

4E1

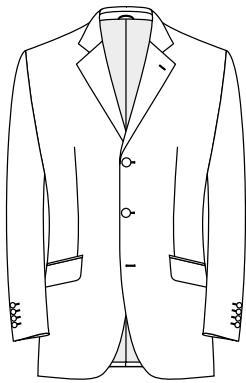
Without breast pocket,
flap side pockets, ticket
pocket



Code

4E2

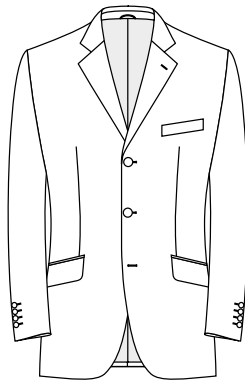
Welt breast pocket,
flap side pockets, ticket
pocket



Code

4D1

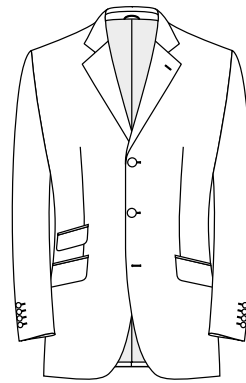
Without breast pocket,
slant flap side pockets



Code

4D2

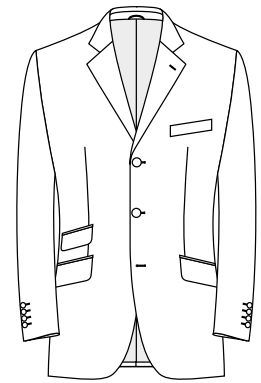
Welt breast pocket, slant
flap side pockets



Code

4F1

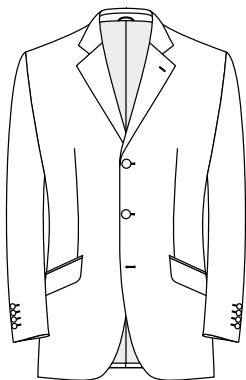
Without breast pocket,
slant flap side pockets,
ticket pocket



Code

4F2

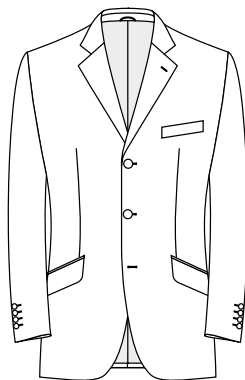
Welt breast pocket, slant
flap side pockets, slant
ticket pocket



Code

4DD1

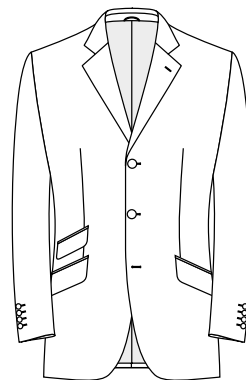
Without breast pocket,
extra slant flap side
pockets



Code

4DD2

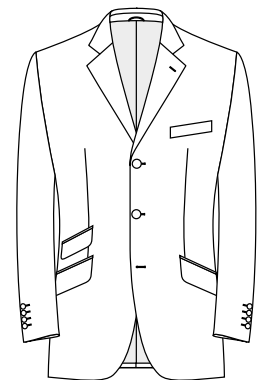
Welt breast pocket,
extra slant flap side
pockets



Code

4FF1

Without breast pocket,
extra slant flap side
pockets, ticket pocket

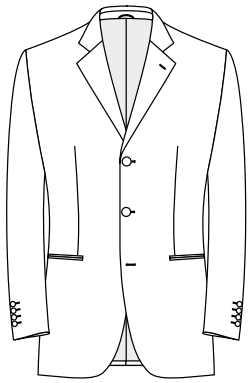


Code

4FF2

Welt breast pocket,
extra slant flap side
pockets, ticket pocket

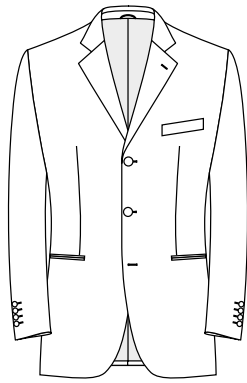




Code

4B1

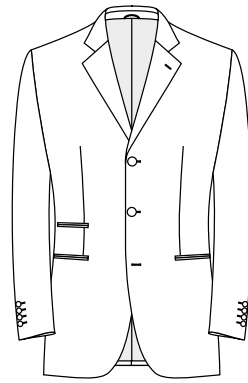
Without breast pocket,
side jetted pockets, no
flaps



Code

4B2

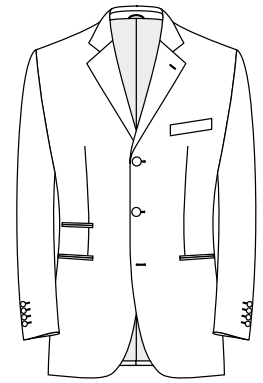
Welt breast pocket, side
jetted pockets, no flaps



Code

4N1

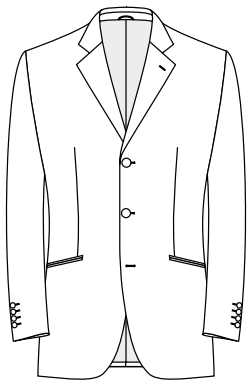
Without breast pocket,
side jetted pockets,
ticket pocket



Code

4N2

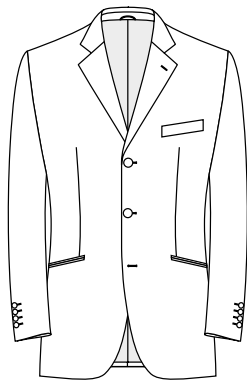
Welt breast pocket, side
jetted pockets, ticket
pocket



Code

4J1

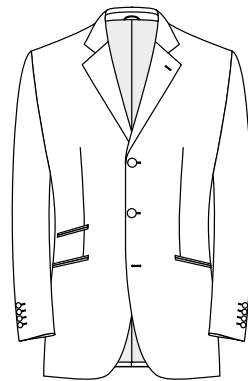
Without breast pocket,
slant side jetted pockets,
no flaps



Code

4J2

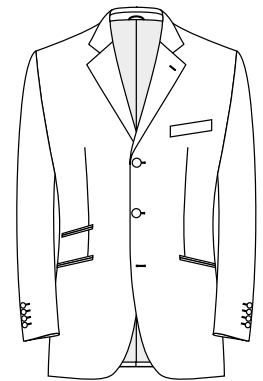
Welt breast pocket, slant
side jetted pockets, no
flaps



Code

4O1

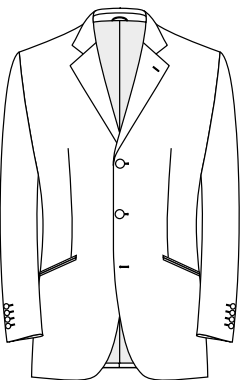
Without breast pocket,
slant side jetted pockets,
ticket pocket



Code

4O2

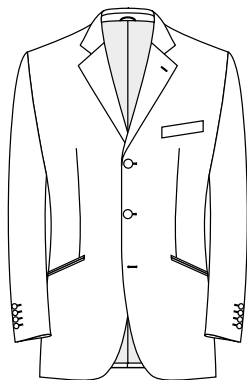
Welt breast pocket,
slant side jetted pockets,
ticket pocket



Code

4JJ1

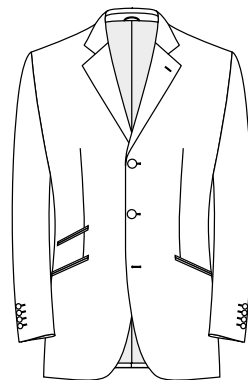
Without breast pocket,
extra slanted side jetted
pockets, no flaps



Code

4JJ2

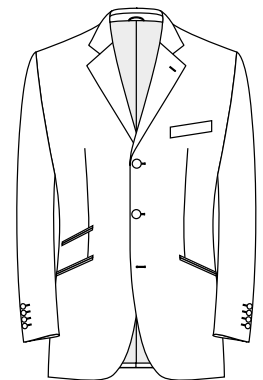
Welt breast pocket,
extra slant side jetted
pockets, no flaps



Code

4P1

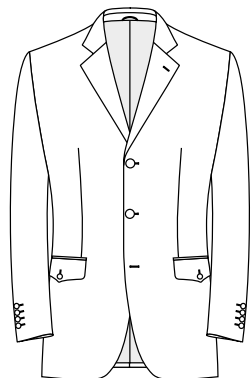
Without breast pocket,
extra slant side jetted
pockets, ticket pocket



Code

4P2

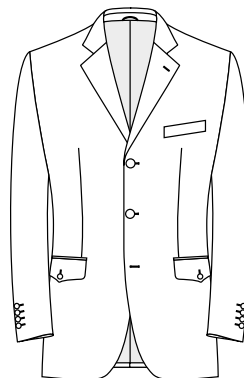
Welt breast pocket,
extra slant side jetted
pockets, ticket pocket



Code

411

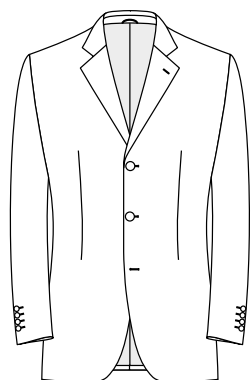
Without breast pocket,
shaped flap side pockets
with button



Code

412

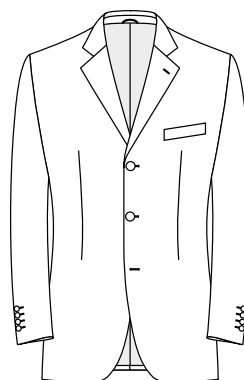
Welt breast pocket,
shaped flap side pockets
with button



Code

4G1

Without pockets

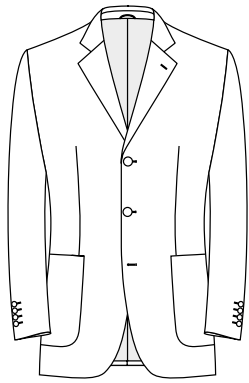


Code

4G2

Welt breast pocket

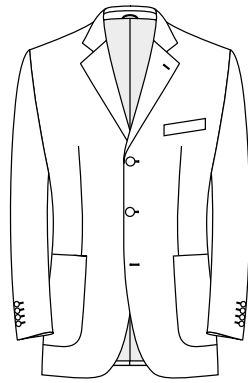




Code

4A1

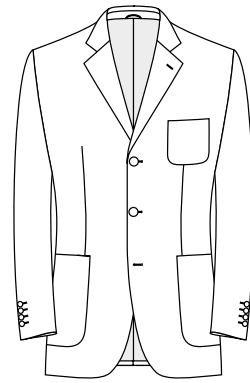
Without breast pocket,
side patch pockets



Code

4A2

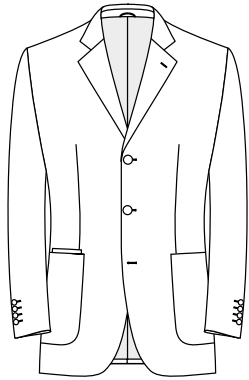
Welt breast pocket, side
patch pockets



Code

4A3

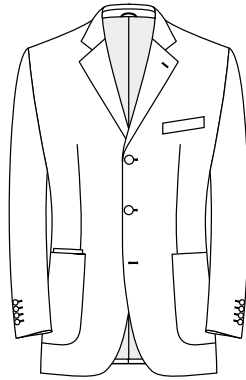
Patch breast pocket,
side patch pockets



Code

4Q1

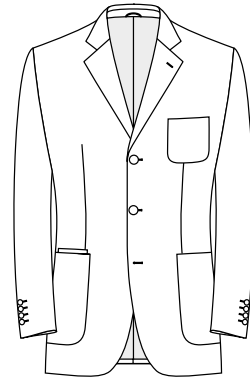
Without breast pocket,
side patch pockets,
patch ticket pocket



Code

4Q2

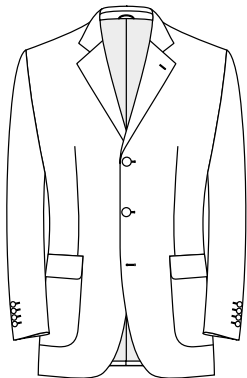
Welt breast pocket, side
patch pockets, patch
ticket pocket



Code

4Q3

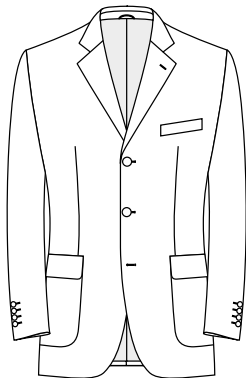
Patch breast pocket,
side patch pockets,
patch ticket pocket



Code

4H1

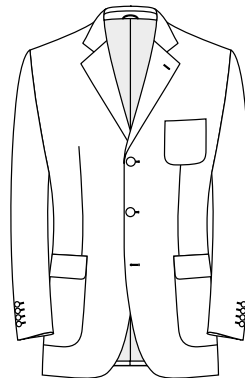
Without breast pocket,
side patch pockets with
flaps



Code

4H2

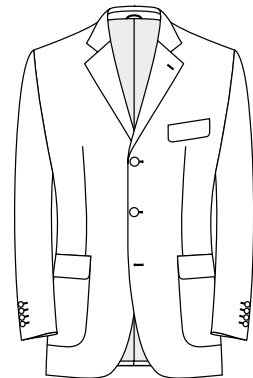
Welt breast pocket, side
patch pockets with flaps



Code

4H3

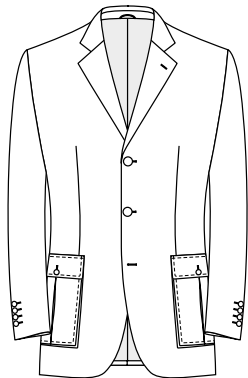
Patch breast pocket, side
patch pockets with flaps



Code

4H4

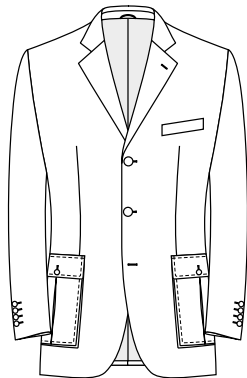
Breast flap pocket, side
patch pockets with flaps



Code

4K1

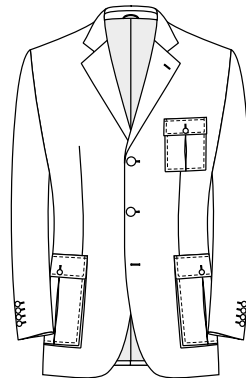
Without breast pocket,
side square bellows
pockets with flaps



Code

4K2

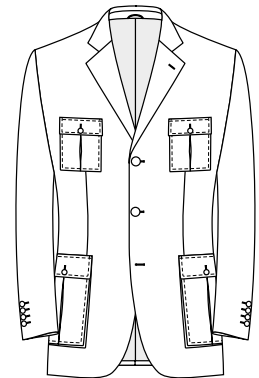
Welt breast pocket, side
square bellows pockets
with flaps



Code

4K5

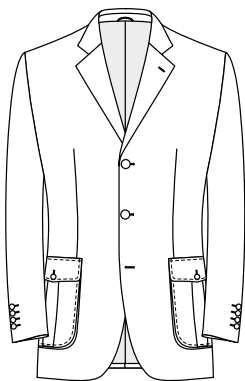
Patch breast pocket
left, side square bellows
pockets with flaps



Code

4K6

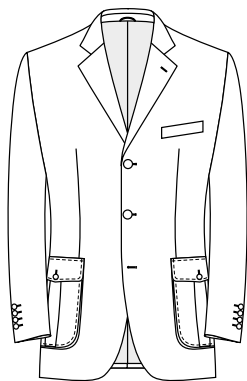
Patch breast pockets
left+right, side square
bellows pockets w. flaps



Code

4L1

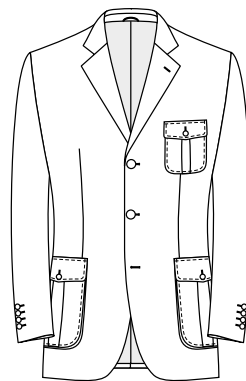
Without breast pocket,
side circle bellows
pockets with flaps



Code

4L2

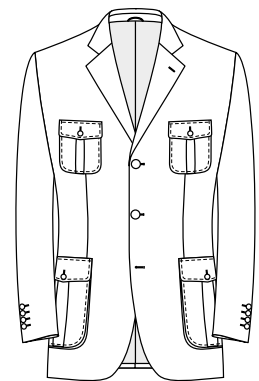
Welt breast pocket, side
round bellows pockets
with flaps



Code

4L7

Patch breast pocket
left, side round bellows
pockets with flaps



Code

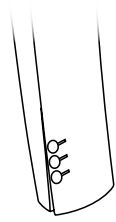
4L8

Patch breast pocket
left+right, side circle
bellows pockets with
flaps

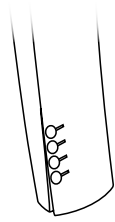


Sham cuff styles

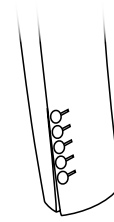
Buttons
side by side



Code
5S3
Sham cuffs, 3
buttons

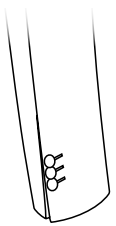


Code
5S4
Sham cuffs, 4
buttons

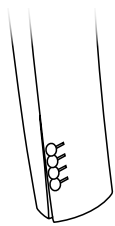


Code
5S5
Sham cuffs, 5
buttons

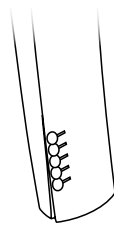
Kissing buttons



Code
5S3X
Sham cuffs, 3
buttons, kissing
buttons



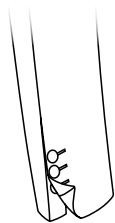
Code
5S4X
Sham cuffs, 4
buttons, kissing
buttons



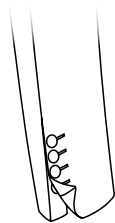
Code
5S5X
Sham cuffs, 5
buttons, kissing
buttons

Open cuff styles *

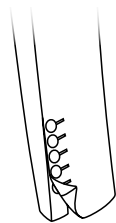
Buttons
side by side



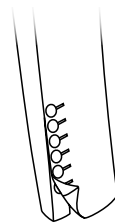
Code
503
Real button
holes, 3 buttons



Code
504
Real button
holes, 4 buttons

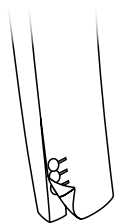


Code
505
Real button
holes, 5 buttons

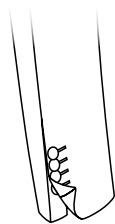


Code
506
Real button
holes, 6 buttons

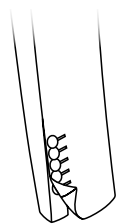
Kissing buttons



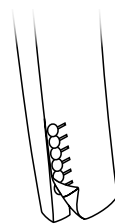
Code
503X
Real button
holes, 3 kissing
buttons



Code
504X
Real button
holes, 4 kissing
buttons

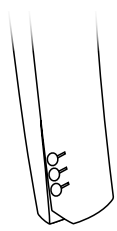


Code
505X
Real button
holes, 5 kissing
buttons

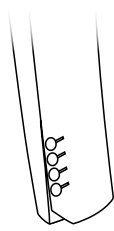


Code
506X
Real button
holes, 6 kissing
buttons

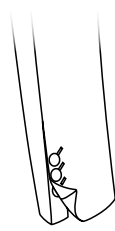
Open cuff styles *



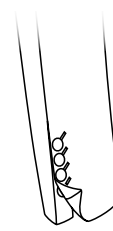
Code
5AM3
Real button
holes, bevelled,
3 buttons



Code
5AM4
Real button
holes, bevelled,
4 buttons

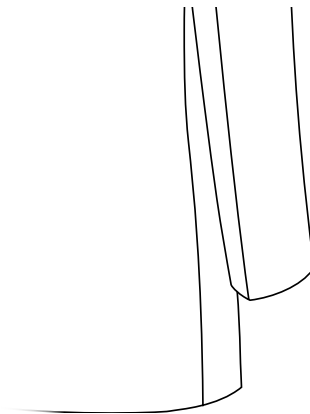


Code
5T3
Real slant
button holes, 3
buttons

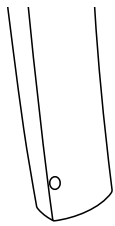


Code
5T4
Real slant
button holes, 4
buttons

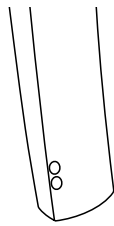
Closed seams styles



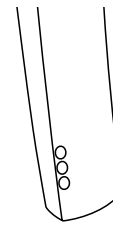
Code
5N
Closed seam,
without button-
holes



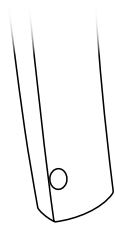
Code
5L1M
Closed seam, 1
small button



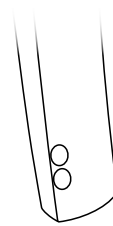
Code
5L2M
Closed seam, 2
small buttons



Code
5L3M
Closed seam, 3
small buttons

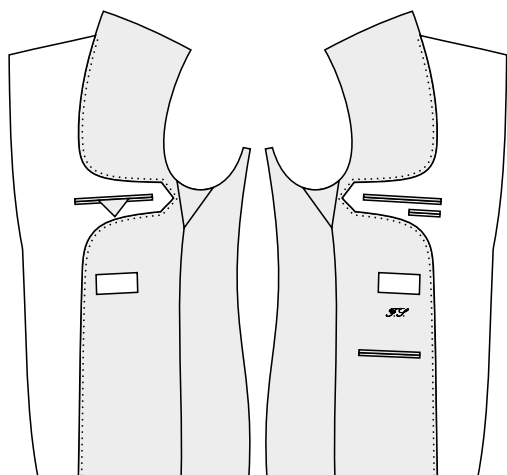


Code
5L1V
Closed seam, 1
big button



Code
5L2V
Closed seam, 2
big buttons



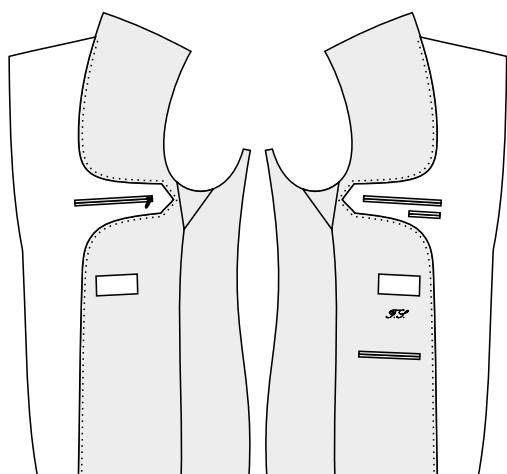


Standard

Code
6HR With tongue facing, 4 pockets, security closing - right

Code
6HL With tongue facing, 4 pockets, security closing - left

Code
6HB With tongue facing, 4 pockets, security closing - both

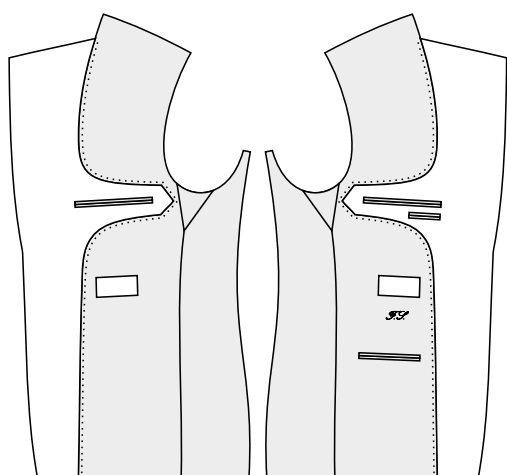


Standard

Code
6IR With tongue facing, 4 pockets, zipper closing - right

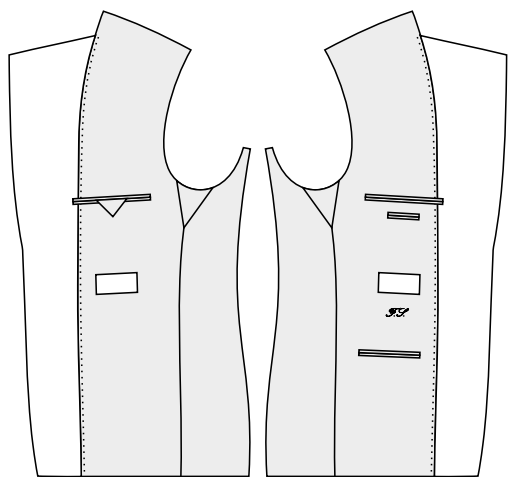
Code
6IL With tongue facing, 4 pockets, zipper closing - left

Code
6IB With tongue facing, 4 pockets, zipper closing - both



Code
6J With tongue facing, 4 pockets, no security fastening

For contrasts you can choose the colour of inside pocket jettings and columbia-stitching* from the lining colour card.*

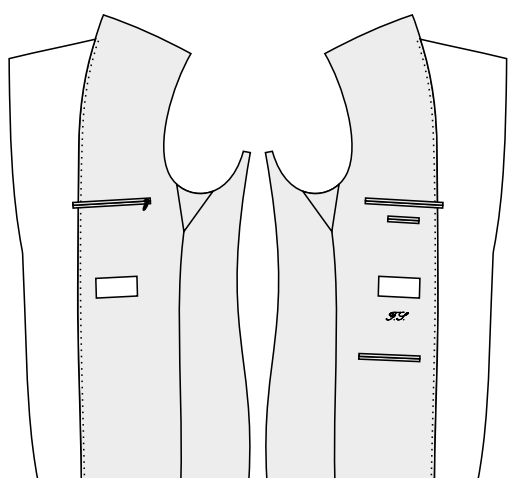


Standard

Code
6ER Without tongue facing, 4 pockets, security closing - right

Code
6EL Without tongue facing, 4 pockets, security closing - left

Code
6EB Without tongue facing, 4 pockets, security closing - both



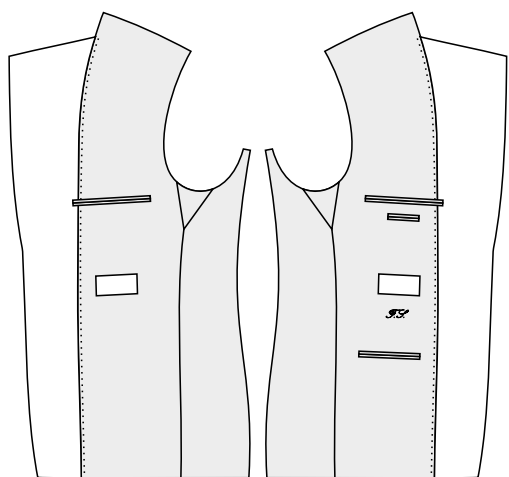
Standard

Code
6FR Without tongue facing, 4 pockets, zipper closing - right

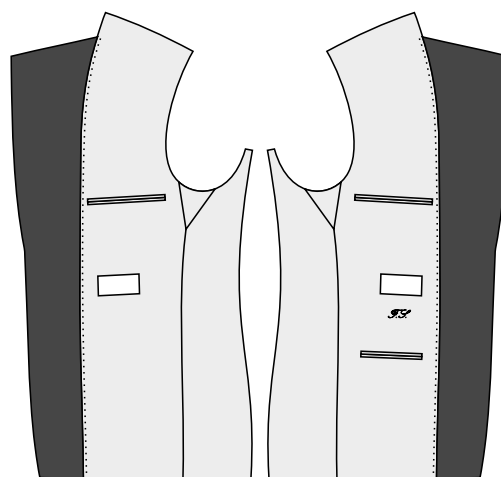
Code
6FL Without tongue facing, 4 pockets, zipper closing - left

Code
6FB Without tongue facing, 4 pockets, zipper closing - both

Dinner jacket
inside pockets



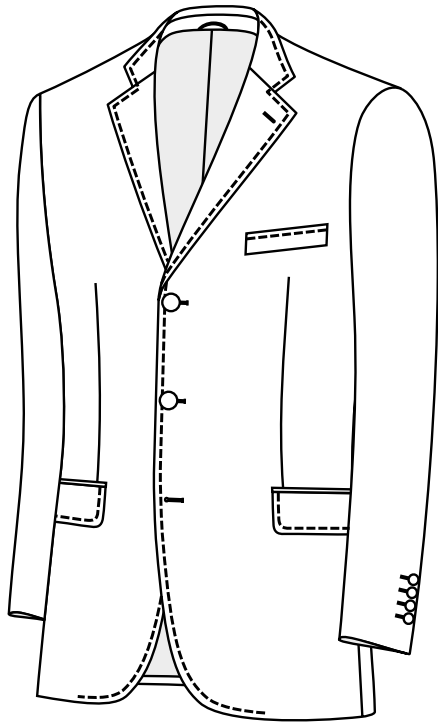
Code
6G Without tongue facing, 4 pockets, without security fastening



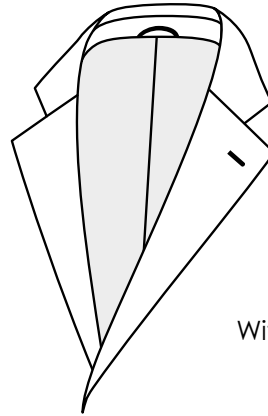
Code
6K Dinner jacket, 2 inside breast pockets, ticket pocket

For technical reasons only available without tongue !



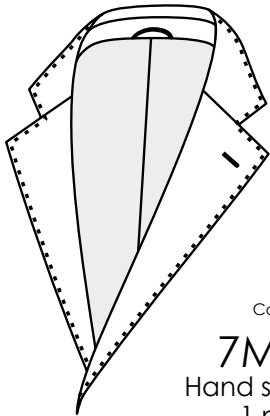


Top stitch / HSE is applied on the edge

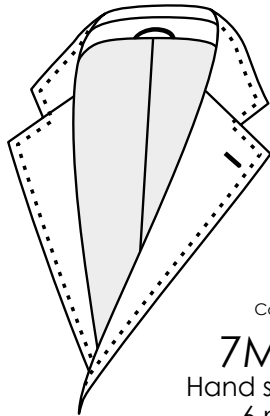


Code
7A
Without stitching

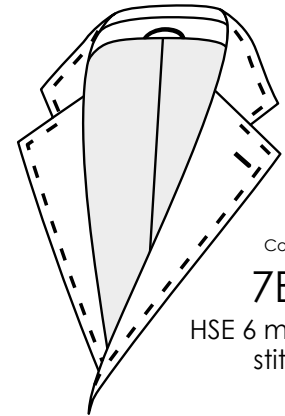
With sensitive materials such as silk, velvet or when the material is too thick HSE/stitching is not possible.



Code
7B1
HSE 1 mm



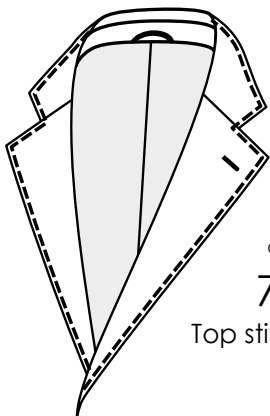
Code
7B6
HSE 6 mm



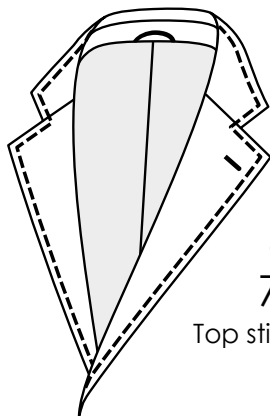
Code
7B7
HSE 6 mm, long stitch

Code
7M1 *
Hand stitching
1 mm

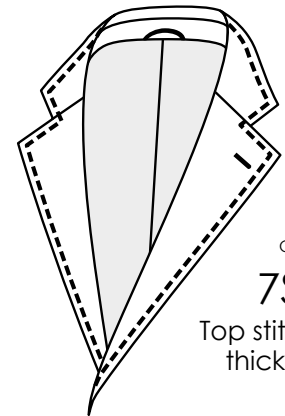
Code
7M6 *
Hand stitching
6 mm



Code
7S2
Top stitch 2 mm

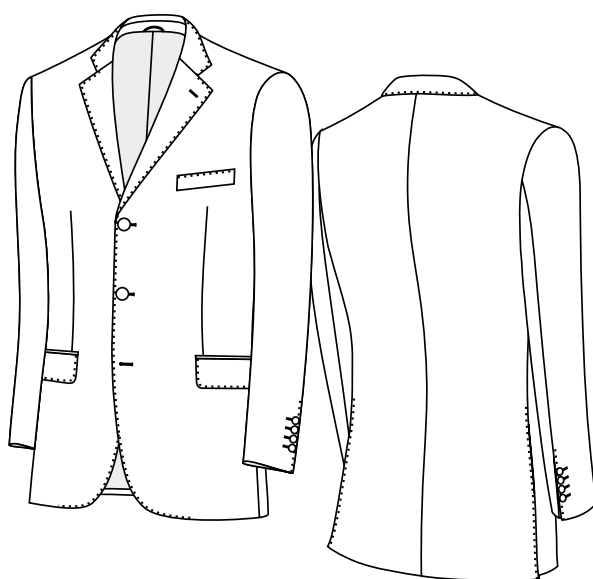


Code
7S5
Top stitch 5 mm



Code
7SS5
Top stitch 5 mm,
thick thread

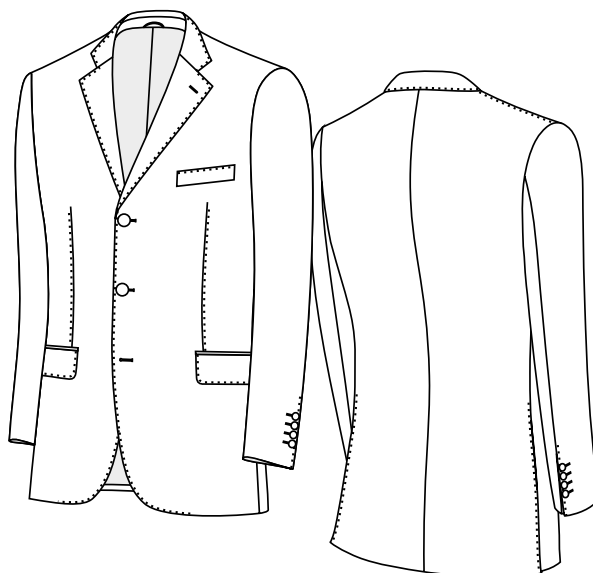
*For the contrasts you can choose the colour of HSE * or stitching * from the lining colour card.*



Code

7D1 *

HSE 1 mm + sleeve vents,
back vent(s)



Code

7E1 *

HSE 1 mm + sleeve
vents, back vent(s), dart,
shoulder

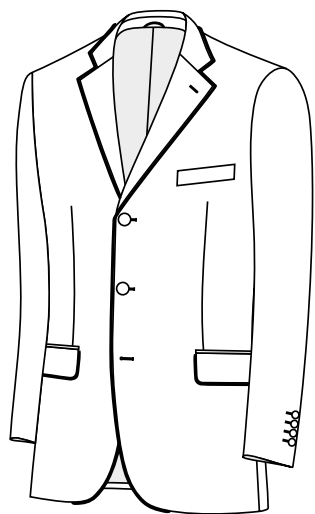


Piping

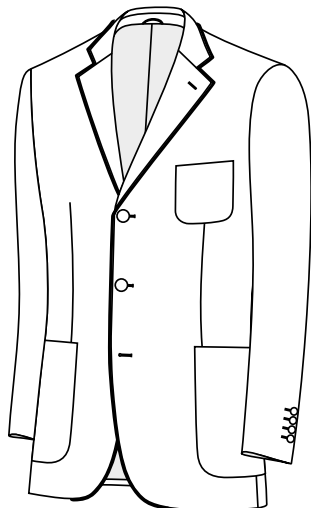
Code

7PT1 *

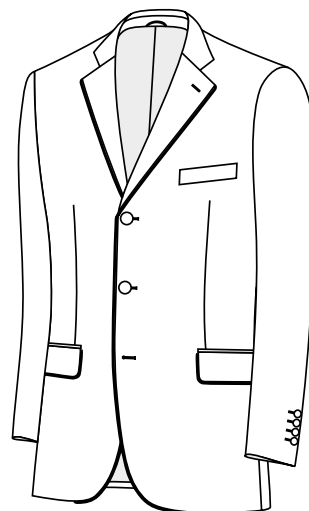
Piping - edge, collar, flaps



Variant with flap pockets, fabric undercollar



Variant with patch pockets, fabric undercollar



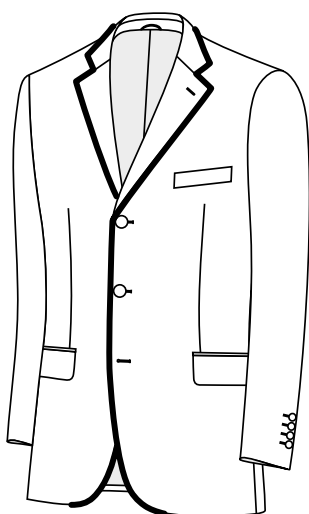
Piping not possible with melton undercollar

Taping

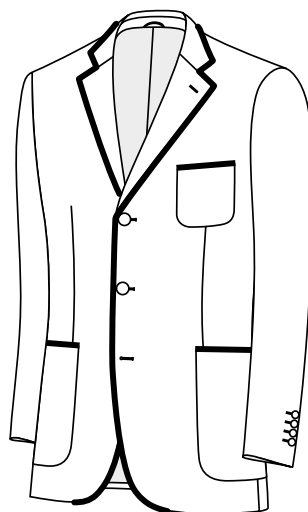
Code

7TT1 *

Taping - edge



Variant with flap pockets, felt collar



Variant with patch pockets, felt collar



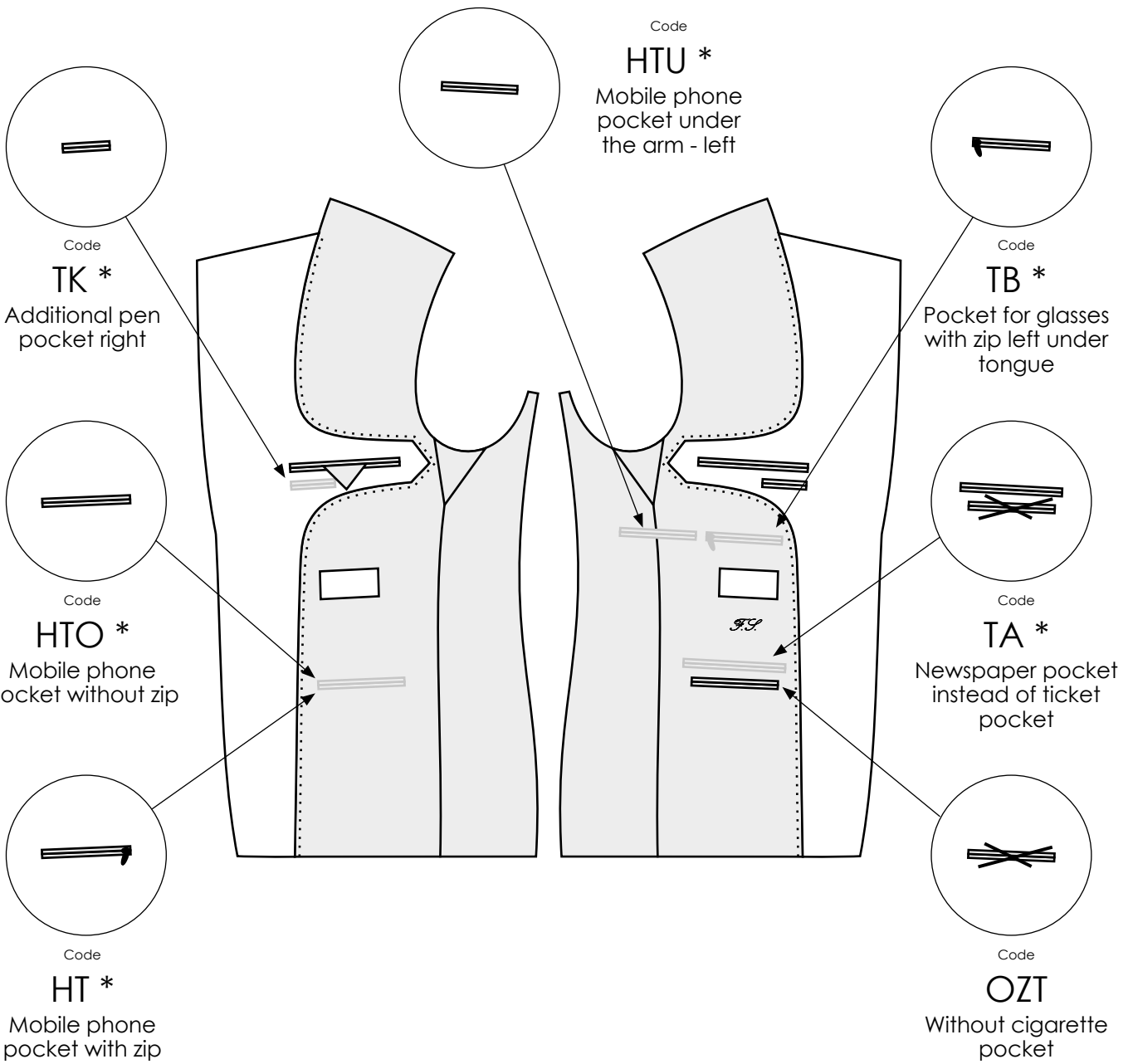
Code
SC
Storm collar



Code
EA
Badge / logo to be fitted (supplied by customer)



Code
EPA
Epaulet





Code

SBH

Second buttonhole on right lapel



Code

TWB

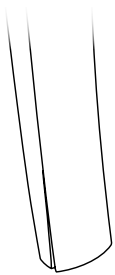
Two buttonholes on the left lapel, distance 1,5 cm



Code

OR

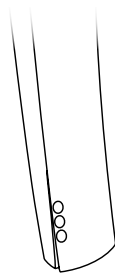
Without lapel buttonhole



Code

AOO

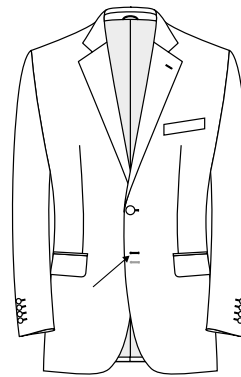
Sleeves without buttonholes and buttons



Code

AOM

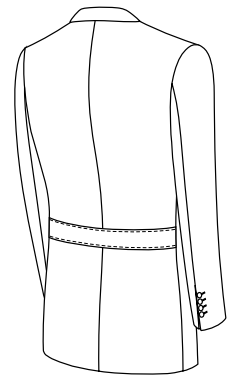
Sleeves without buttonholes and buttons on



Code

RS

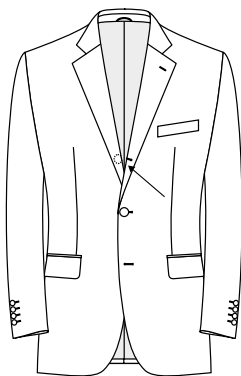
Rider jacket - last button higher 1,5 cm



Code

BL *

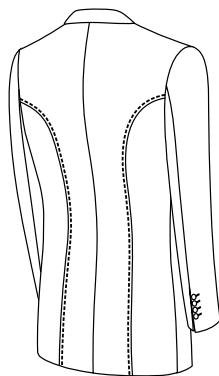
Patch half belt



Code

THB

2 and 1/2 button (base 2 button jacket)

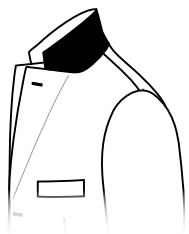


Code

BAS

Princess seam stitch as front edge 7SS5

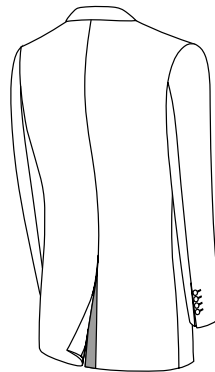
- FO Front without buttonholes
- SCHK No padding
- SCHB Additional padding - both
- SCHL Additional padding - left
- SCHR Additional padding - right
- FR Flower buttonhole - lapel
- HF Heavier front fusing
- LF Lighter front fusing
- WF Without front fusing
- SV Special embroidery (Transfer file (pdf, jpg) + info about size, positions and colour)



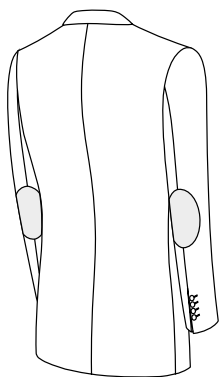
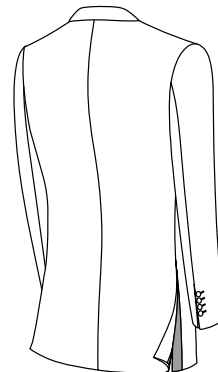
Fabric undercollar *



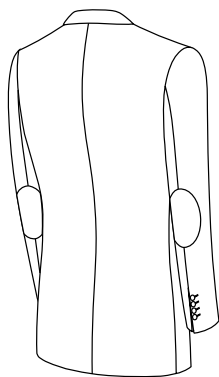
Contrast - collar *



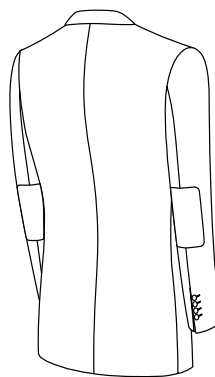
Contrast - lining side/back vent *



Alcantara elbow patches round *



Fabric patch. round *



Fabric patch. square *



Contrast - lining cuff vent *

Contrasts - Stitching

- Contrast - lapel button hole *
- Contrast - front button holes *
- Contrast - 1st sleeve button hole from bottom *
- Contrast - 2nd sleeve button hole from bottom *
- Contrast - sleeve all button holes *
- Contrast - monogram

Contrasts - Materials

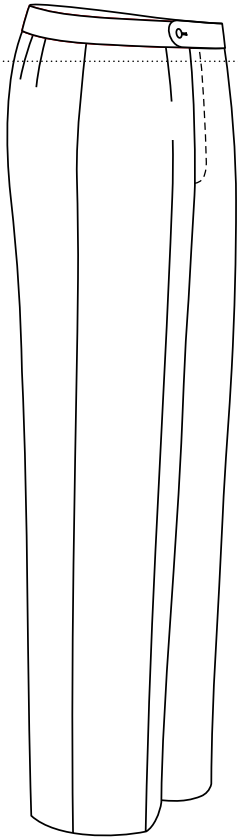
- Contrast - felt collar *
- Contrast - jettings inside pockets *
- Leather buttonhole lapel *
- Silk - lapel and jettings *
- Contrast - sleeve lining
- Wooden hanger *



You can choose between these MODELS / SILHOUETTES:

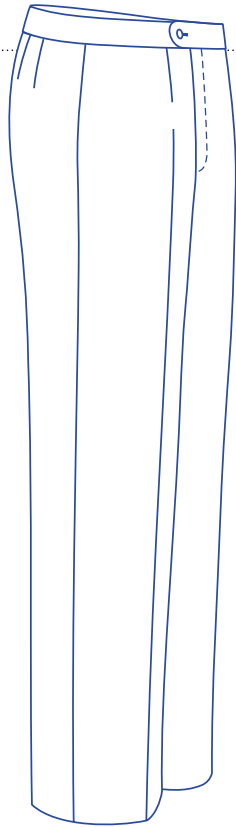
MODEL
BLACK Line

Comfortable cut
Wider silhouette
Wider thighs
2 back darts
Higher seat



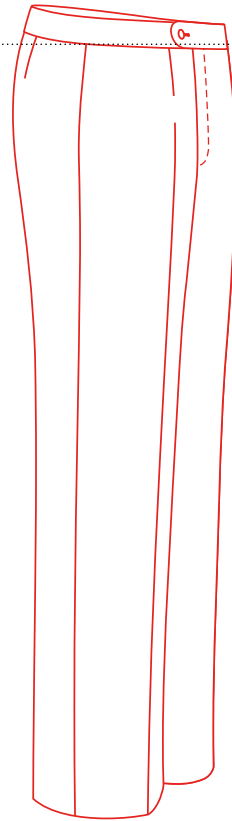
MODEL
BLUE Line

Classic cut
Straight silhouette
Comfortable thighs
2 back darts



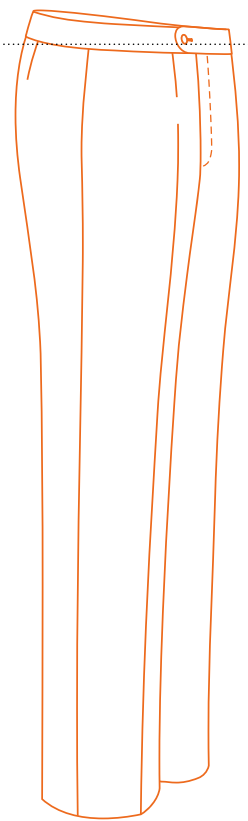
MODEL
RED Line

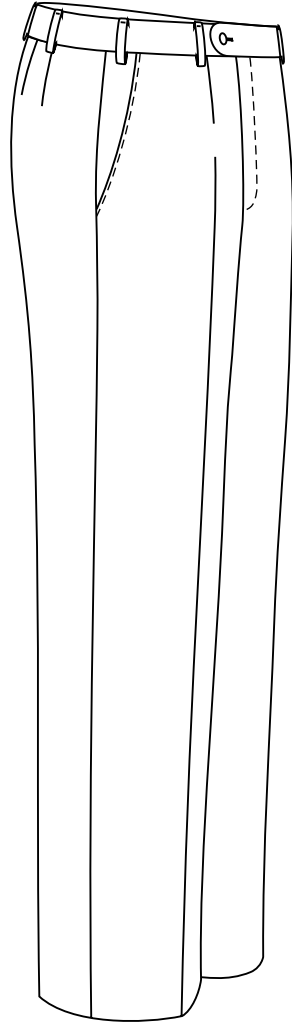
Narrow cut
Slim silhouette
Narrower thighs
1 back dart



MODEL
ORANGE Line

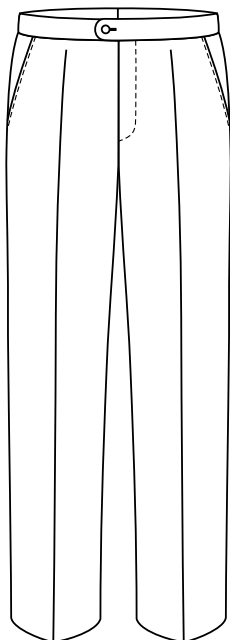
Trendy cut
Narrow silhouette
Close thighs
1 back dart





Code
1T
Normal

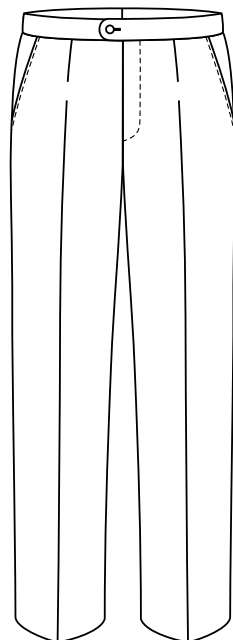




Code

2A

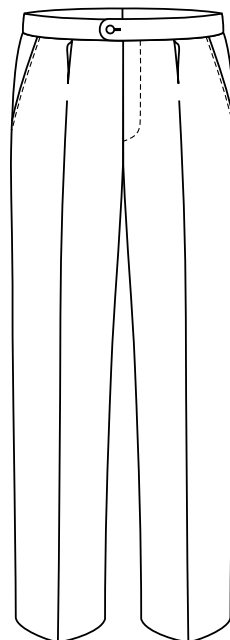
Plain front
without
dartseam



Code

2D

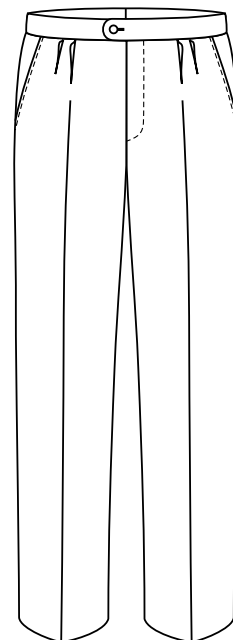
Plain front with
dartseam



Code

2B

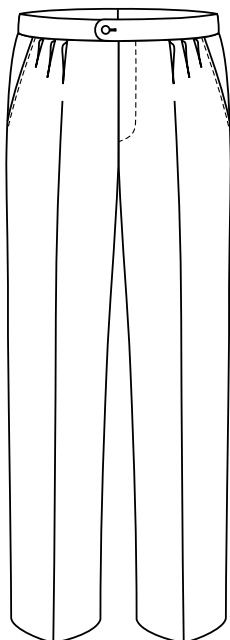
1 reverse pleat



Code

2C

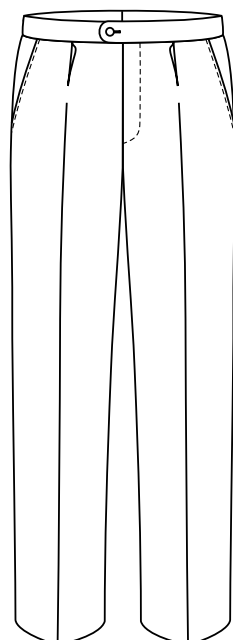
2 reverse pleats



Code

2E

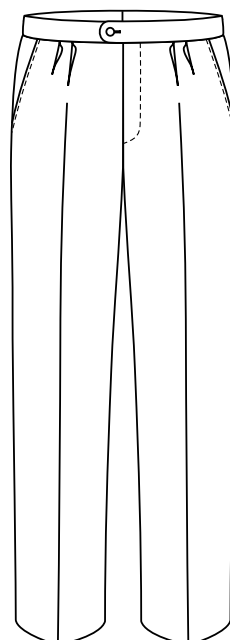
3 reverse pleats



Code

2F

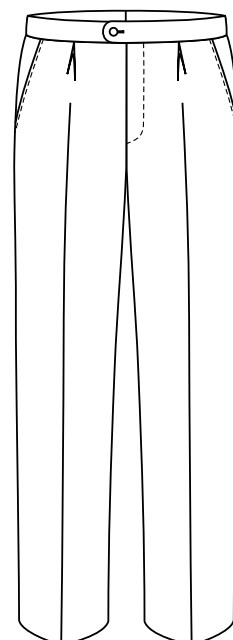
1 inward pleat



Code

2G

2 inward pleats

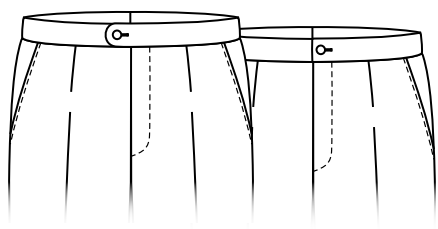


Code

2H

Box pleat

Waistband without belt loops



Code

8AA

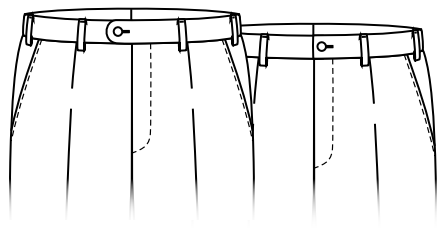
Waistband without belt loops, with extension

Code

8AB

Waistband without belt loops, without extension

Waistband with 8 belt loops



Code

8BA

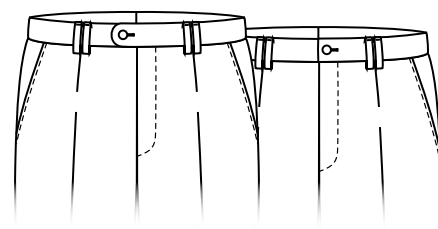
Waistband with 8 belt loops, with extension

Code

8BB

Waistband with 8 belt loops, without extension

Waistband with 6 double belt loops



Code

8HA

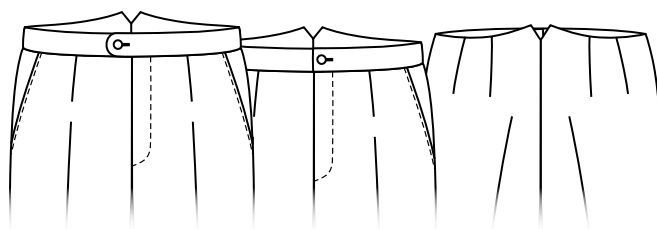
Waistband with 6 double belt loops, with extension

Code

8HB

Waistband with 6 double belt loops, without extension

Waistband with fishtail back



Code

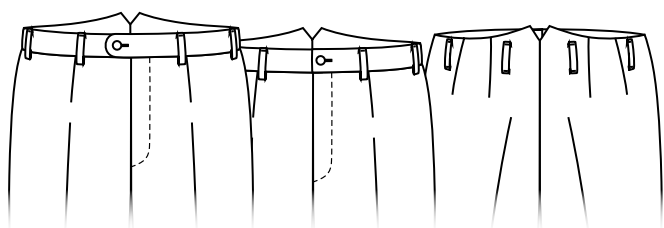
8JA

Waistband with fishtail back, with extension

Code

8JB

Waistband with fishtail back, without extension



Code

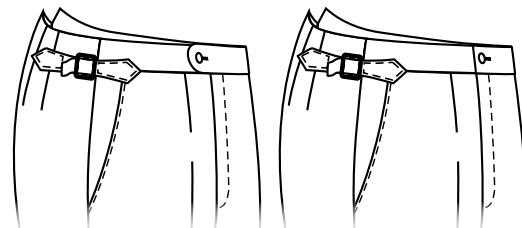
8JAL

Waistband with fishtail back, 8 belt loops, with extension

Code

8JBL

Waistband with fishtail back, 8 belt loops, without extension



Code

8KA *

Waistband with fishtail back, strap and buckle, with extension

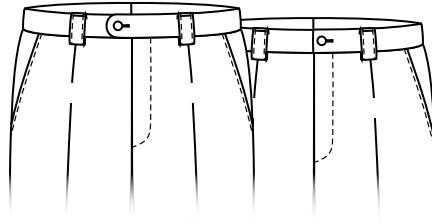
Code

8KB *

Waistband with fishtail back, strap and buckle, without extension



Waistband with 6 wide belt loops



Code

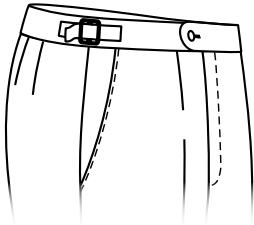
81A

Waistband with
6 wide (3 cm)
belt loops, with
extension

Code

81B

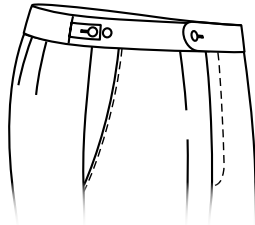
Waistband
with 6 wide
(3 cm) belt
loops, without
extension



Code

8C *

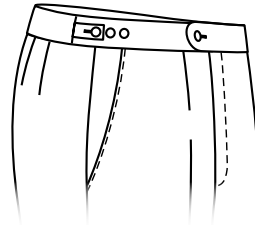
Waistband with
strap and buckle,
with extension



Code

8D2 *

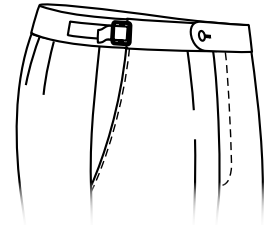
Tabs and 2 buttons,
with extension



Code

8D3 *

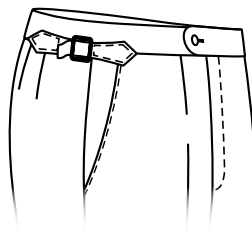
Tabs and 3 buttons,
with extension



Code

8G *

Adjustable
waistband, with
extension



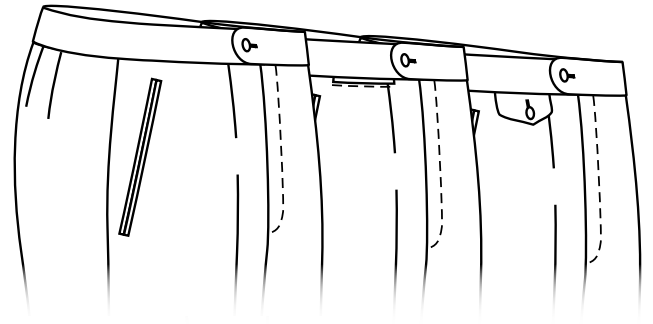
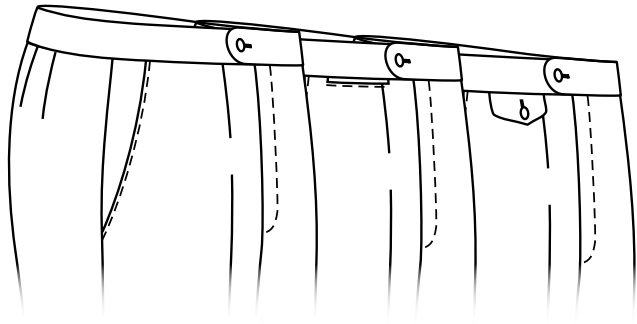
Code

8T *

Waistband with
tailored strap
and buckle, with
extension

Slant side pockets

Jetted pockets



Code

Code

Code

Code

Code

Code

3AA

3AB

3AC

3CA

3CB

3CC

Slant side pockets, without watch pocket

Slant side pockets, watch pocket without flap

Slant side pockets, watch pocket with flap

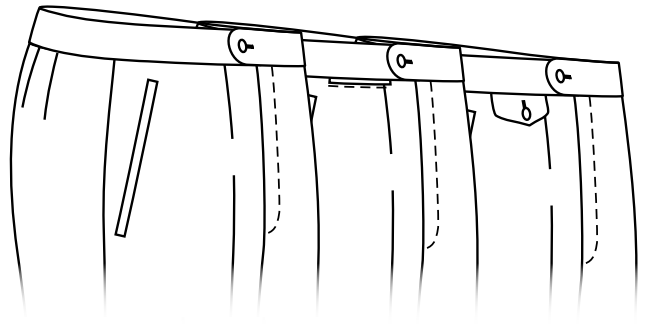
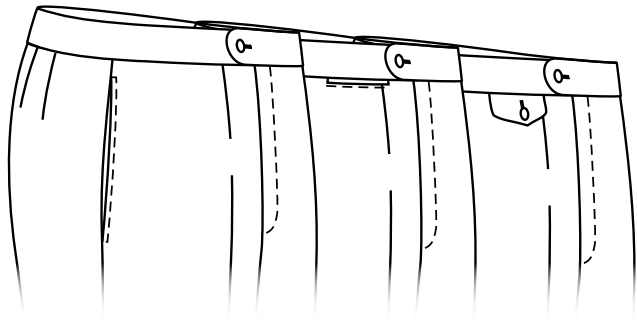
Jetted pockets, without watch pocket

Jetted pockets, watch pocket without flap

Jetted pockets, watch pocket with flap

Straight pockets

Welted pockets



Code

Code

Code

Code

Code

Code

3FA

3FB

3FC

3NA

3NB

3NC

Straight side pockets, without watch pocket

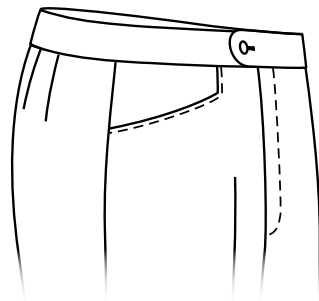
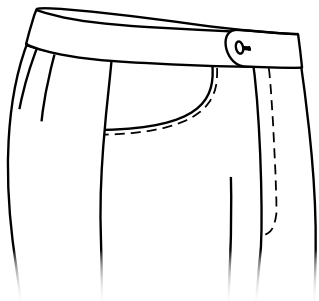
Straight side pockets, watch pocket without flap

Straight side pockets, watch pocket with flap

Welted pockets, without watch pocket

Welted pockets, watch pocket without flap

Welted pockets, watch pocket with flap



Code

Code

Code

3E

3L

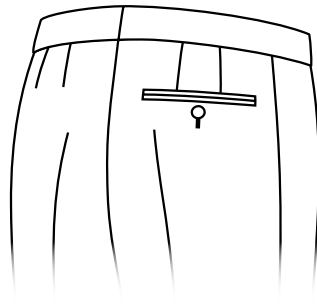
3M

Round pockets

Frogmouth pocket

Without pockets

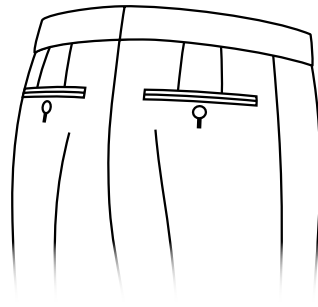




Code

4A1

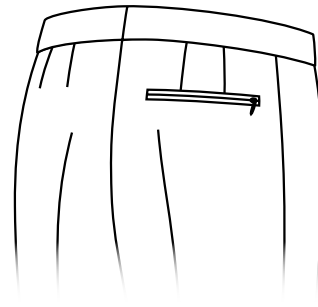
1 jettted pocket with
button



Code

4A2

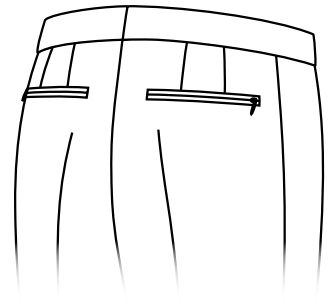
2 jettted pockets with
button



Code

4H1

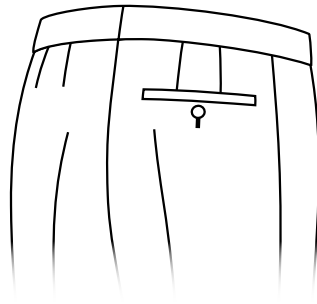
1 jettted pocket with
zip



Code

4H2

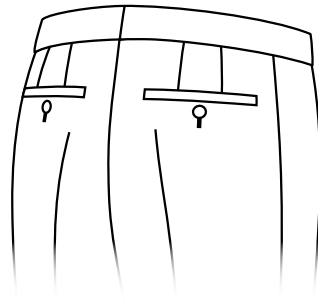
2 jettted pockets with
zip



Code

4C1

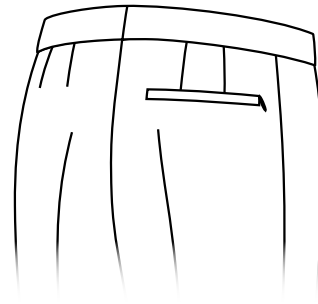
1 welted pocket
with button



Code

4C2

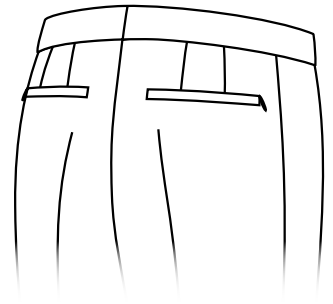
2 welted pockets
with button



Code

4K1

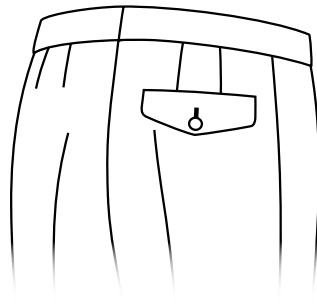
1 welted pocket
with zip



Code

4K2

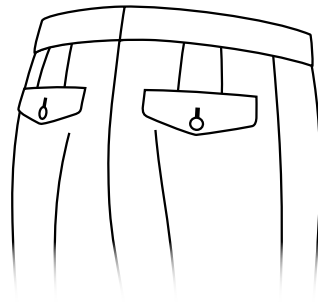
2 welted pockets
with zip



Code

4I1

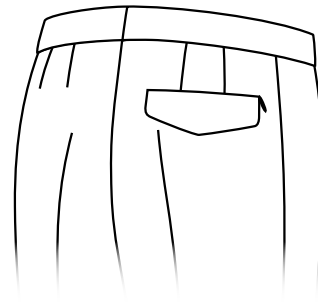
1 welted pocket
with flap



Code

4I2

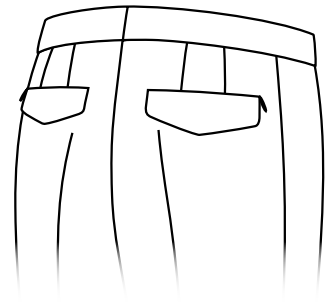
2 welted
pockets with
flap



Code

4J1

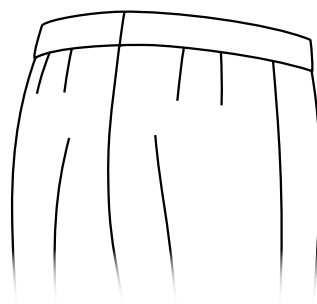
1 welted pocket
with flap and zip



Code

4J2

2 welted
pockets with
flap and zip

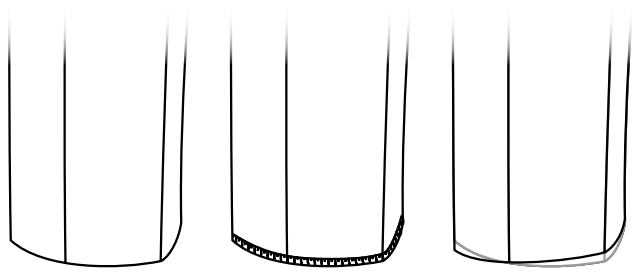


Code

4G

Without pockets

Hem 5 cm



Code

5AR

Hem 5 cm,
finished

Code

5AO

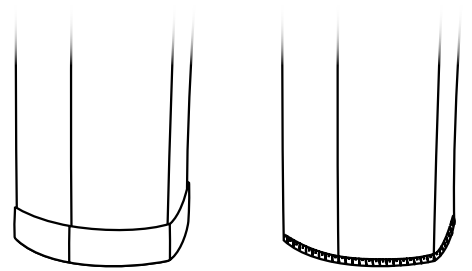
Hem 5 cm,
unfinished

Code

5ASR

Shorter in front 1
cm, hem 4cm,
finished

Turn-up 3 cm



Code

5DR

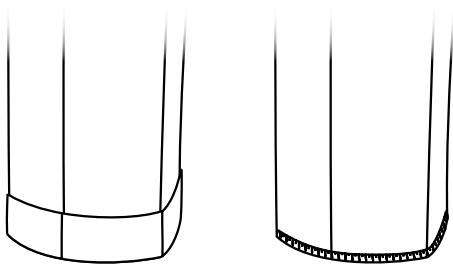
Turn-up 3 cm,
finished

Code

5DO

Turn-up 3 cm,
unfinished

Turn-up 4 cm



Code

5BR

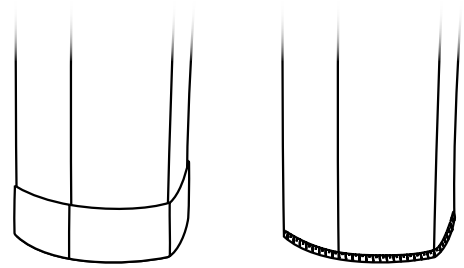
Turn-up 4 cm,
finished

Code

5BO

Turn-up 4 cm,
unfinished

Turn-up 5 cm



Code

5ER

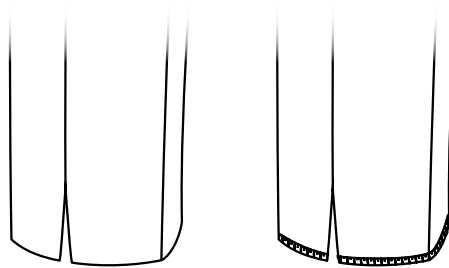
Turn-up 5 cm,
finished

Code

5EO

Turn-up 5 cm,
unfinished

Vent 4 cm in side seam



Code

5HR

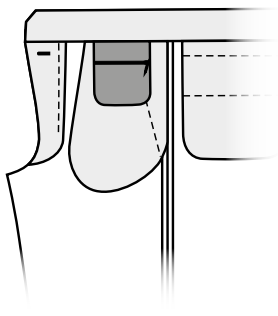
Vent 4 cm in
side seam,
finished

Code

5HO

Vent 4 cm in
side seam,
unfinished

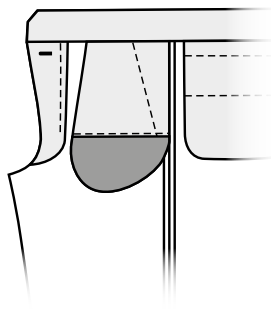




Code

TB

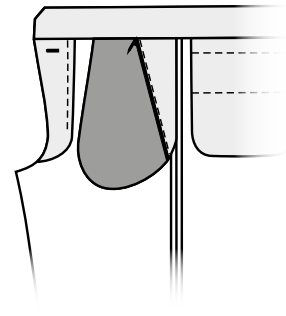
Security pocket with zip, inside waistband



Code

VT

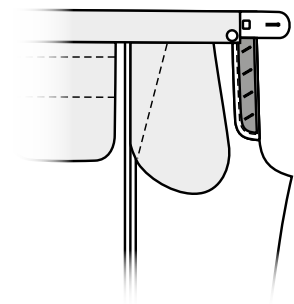
Stronger pocket bags



Code

TT

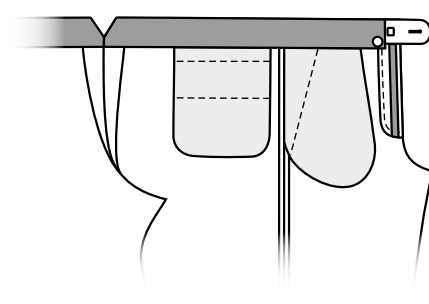
Security pocket with zip, inside right front pocket



Code

KV

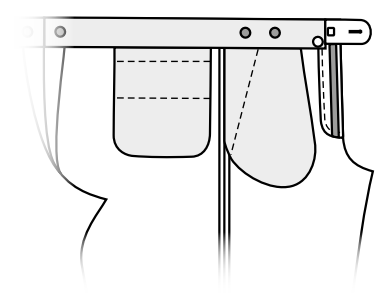
Button fly



Code

AD

Centre back 'V'

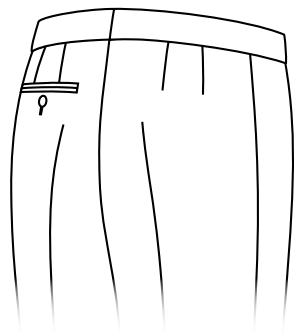


Code

HK

Buttons inside for braces

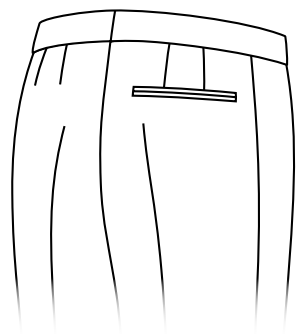
ATTENTION, NOT POSSIBLE TO EXTEND THE WAIST!



Code

HTL

1 hip pocket - left

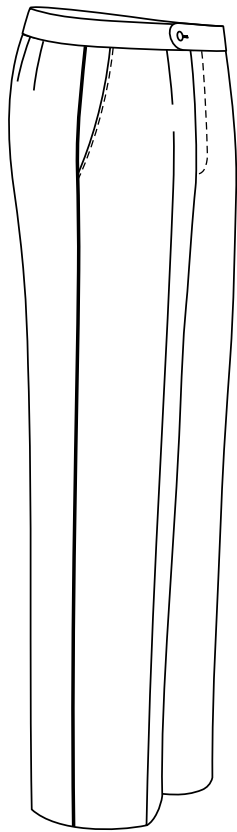


Code

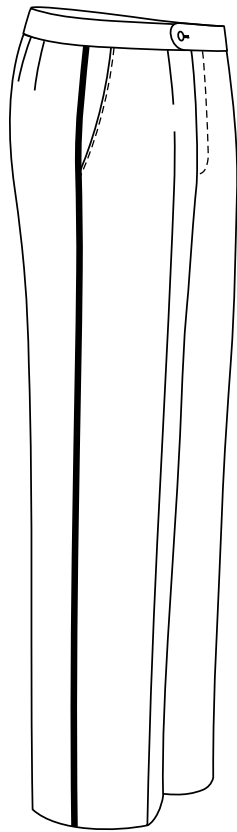
OKHT

Without buttonhole and button on hip pocket

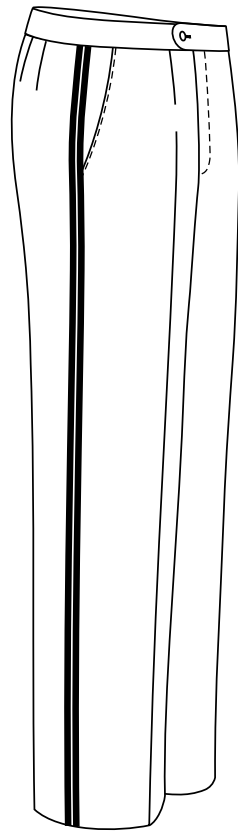
- HF Trousers with back lining (below knee) *
- OF Without knee lining
- SF Completely lined from waistband to bottom * (not available on fabrics under 300 gr)
- GS Top stitch on the side seam 6 mm
- HH Hook instead of button on waistband
- DS Belt prong loop
- TC Change pocket
- SCH1 1 pair of loops extra
- SCH6 6 loops extra
- SCH8 8 loops extra
- OB No front and back crease
- AF Trousers completely lined (for allergic) *



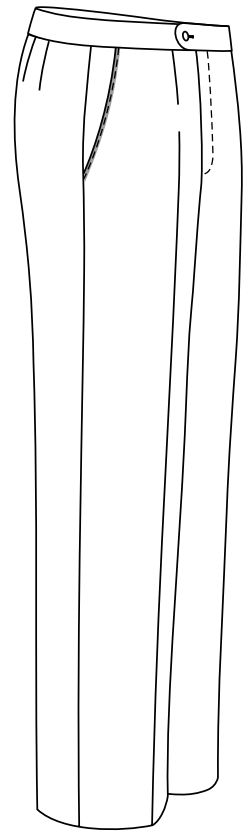
Piping on the side seam *



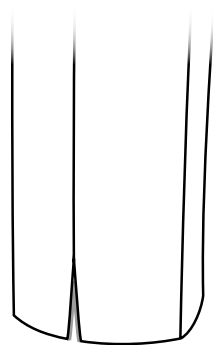
Smoking trousers - single silk side seams *



Tailcoat trousers - double silk side seams *



Alcantara on pocket *

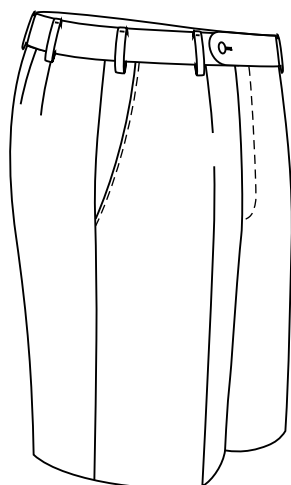


Lining piping in vent on bottom *



MODEL

All possibilities are the same as by normal trousers



TYPE

1T

Normal

FRONT POCKETS

- 3AA Slant side pockets, without watch pocket
- 3AB Slant side pockets, watch pocket without flap
- 3AC Slant side pockets, watch pocket with flap
- 3FA Straight side pockets, without watch pocket
- 3FB Straight side pockets, watch pocket without flap
- 3FC Straight side pockets, watch pocket with flap
- 3E Round pockets
- 3L Frogmouth pocket
- 3M Without pockets

BASIC

- 2A Plain front without dartseam
- 2B 1 reverse pleat
- 2F 1 inward pleat
- 2C 2 reverse pleats

WAISTBAND

- 8AA Waistband without belt loops, with extension
- 8AB Waistband without belt loops, without extension
- 8BA Waistband with 8 belt loops, with extension
- 8BB Waistband with 8 belt loops, without extension
- 8HA Waistband with 6 double belt loops, with extension
- 8HB Waistband with 6 double belt loops, without extension
- 8IA Waistband with 6 wide (3 cm) belt loops, with extension
- 8IB Waistband with 6 wide (3 cm) belt loops, without extension

BOTTOM

- 5AR Hem 5 cm, finished
- 5AO Hem 5 cm, unfinished
- 5BR Turn-up 4 cm, finished
- 5BO Turn-up 4 cm, unfinished
- 5HR Vent 4 cm in side seam, finished
- 5HO Vent 4 cm in side seam, unfinished

HIP POCKETS

All possibilities are the same as by normal trousers

Style options

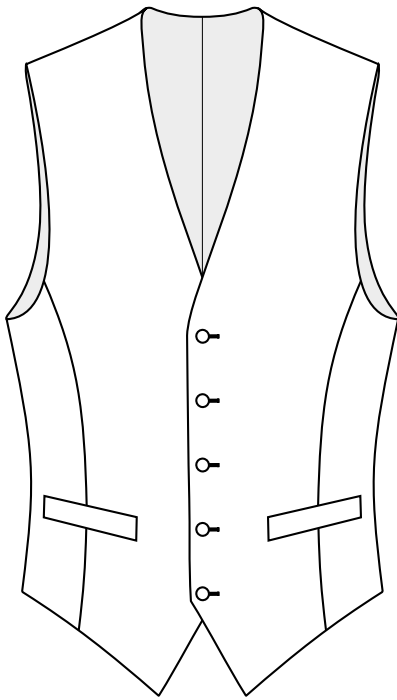
- AD Centre back «V»
- TB Security pocket with zip, inside waistband
- GS Top stitch on the side seam 6 mm
- TT Security pocket with zip, inside right front pocket
- OKHT Without buttonhole and button on hip pocket
- HH Hook instead of button on waistband
- HTL 1 hip pocket - left
- KV Button fly
- VT Stronger pocket bags
- DS Belt prong loop
- TC Change pocket
- SCH1 1 pair of loops extra
- SCH6 6 loops extra
- SCH8 8 loops extra
- OB No front and back crease

MODEL
BLACK Line

Classic cut
Narrow silhouette
Higher armhole
Fitted cut

TYPE

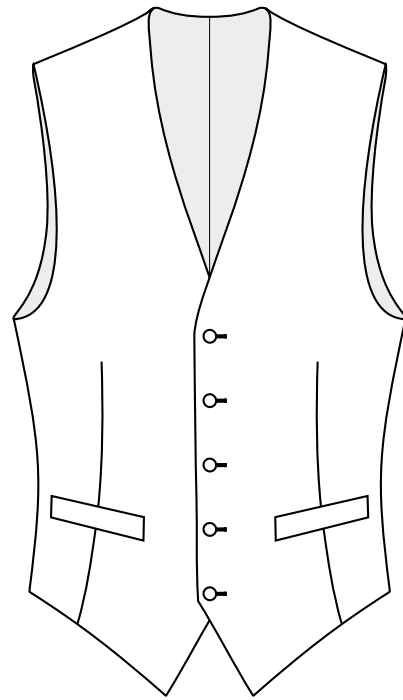
We offer two styles of waistcoat:



Code

1A

With full front seam
(not available for portly sizes)

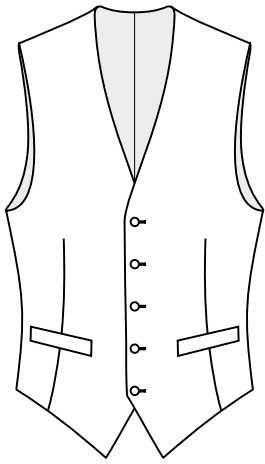


Code

1B

With waist dart

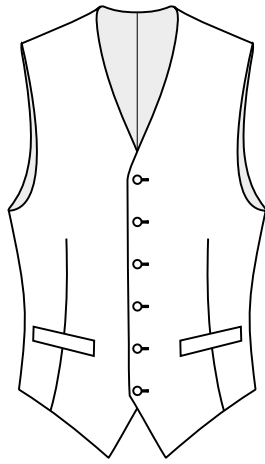




Code

2A

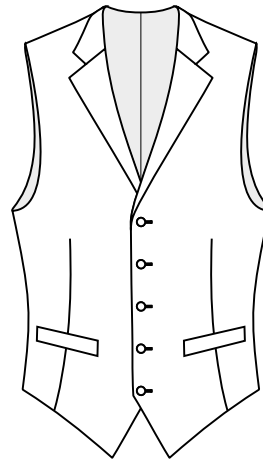
SB, 5 button, with points



Code

2B

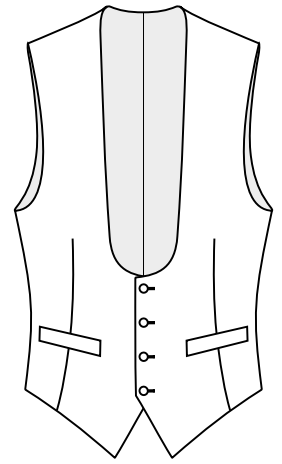
SB, 6 button, with points



Code

2E

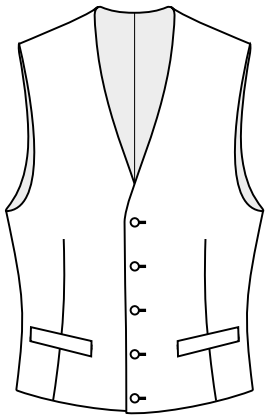
SB, 5 button, lapel, with points



Code

2H

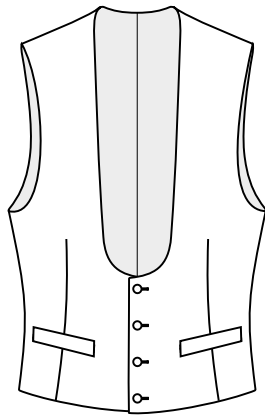
SB, 4 buttons, horseshoe, with points



Code

2D

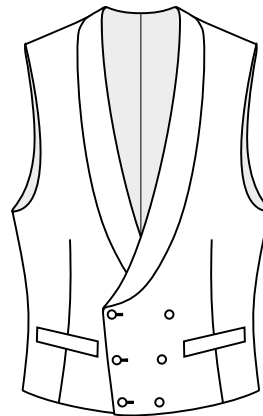
SB, 5 buttons, straight bottom



Code

2G

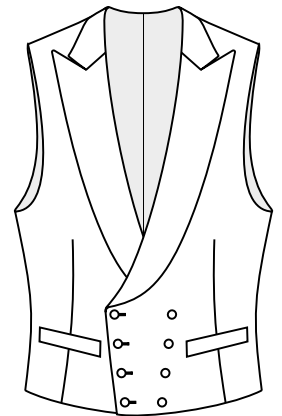
SB, 4 buttons, horseshoe, straight bottom



Code

2F

DB, 6 x 3, shawl lapel, straight bottom

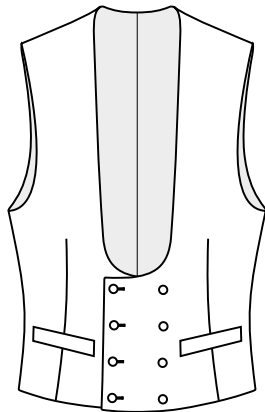


Code

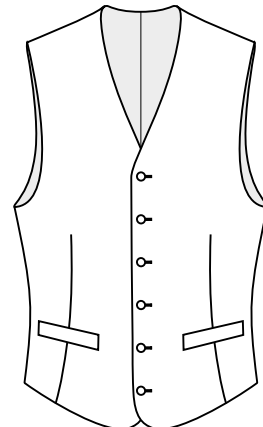
2I

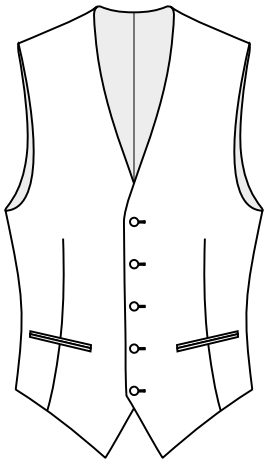
DB, 8 x 4, peak lapel, straight bottom

Code
2J
DB, 8 x 4, horseshoe, straight bottom

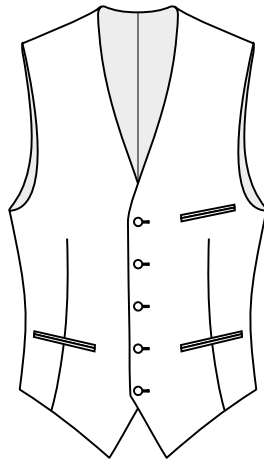


Code
2C
SB, 6 buttons, round bottom

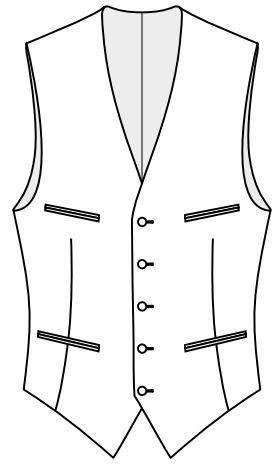




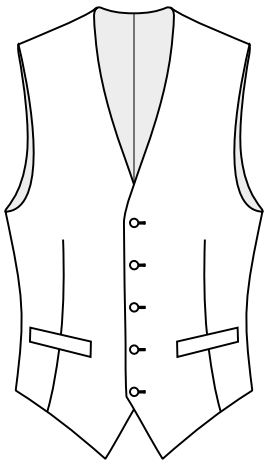
Code
4A2
2 jetted pockets



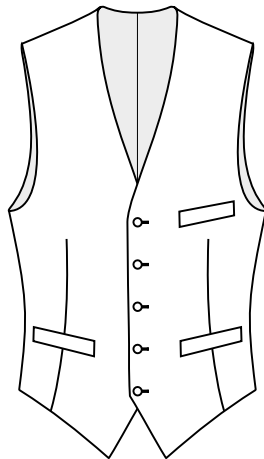
Code
4A3
3 jetted pockets



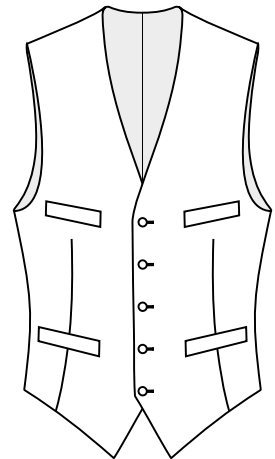
Code
4A4
4 jetted pockets



Code
4B2
2 welt pockets

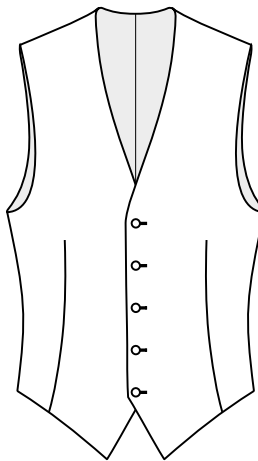
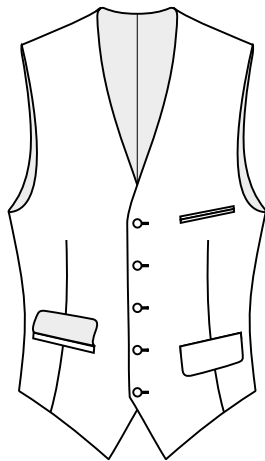


Code
4B3
3 welt pockets



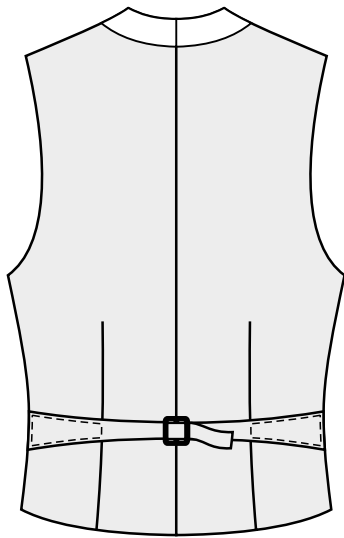
Code
4B4
4 welt pockets

Code
4D3
Breast jetted
pocket, 2 welted
side pockets with
flap



Code
4C
Without pockets

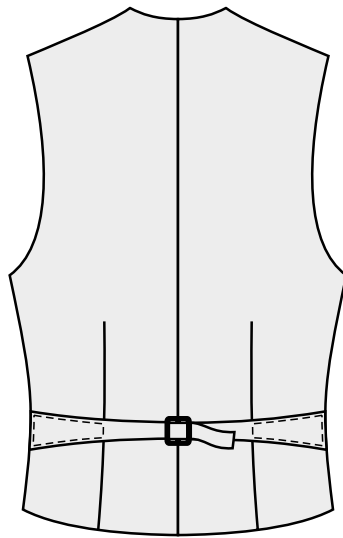




Code

3A

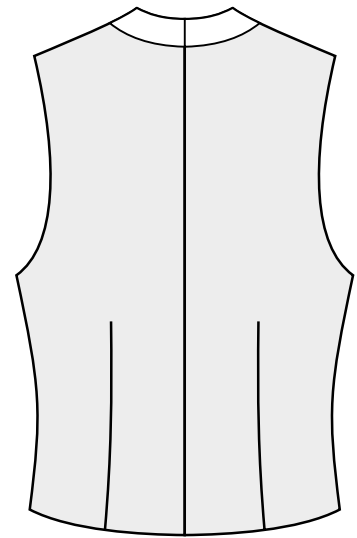
Lining back and buckle



Code

3E

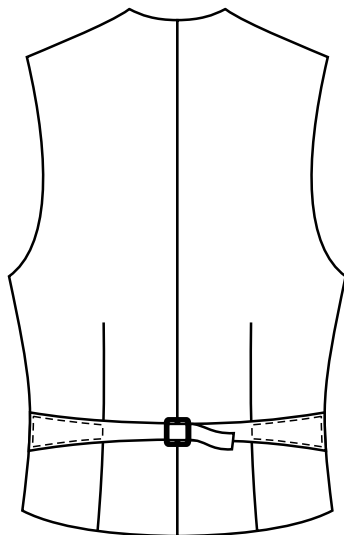
Lining back and buckle



Code

3D

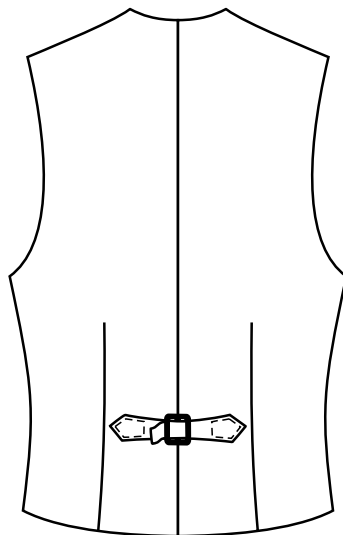
Lining back, fabric neck,
without buckle



Code

3B *

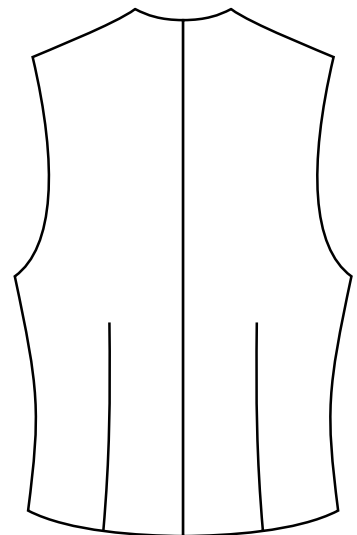
Cloth back and buckle



Code

3F *

Cloth back and tailored
strap and buckle

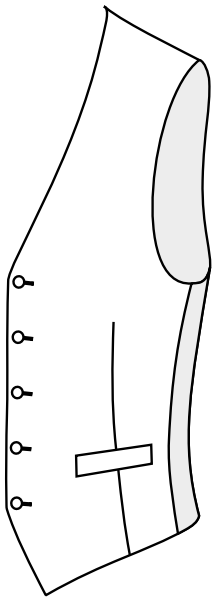


Code

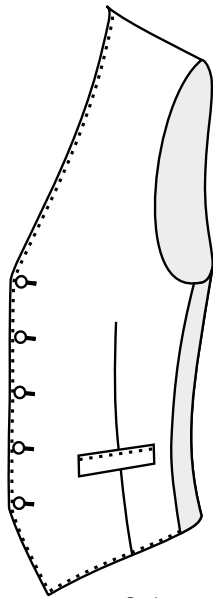
3C *

Cloth back, without
buckle

*ATTENTION, NOT FOR THICK
FABRICS!*

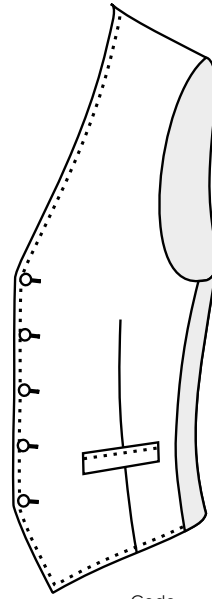


Code
5A
Without stitching



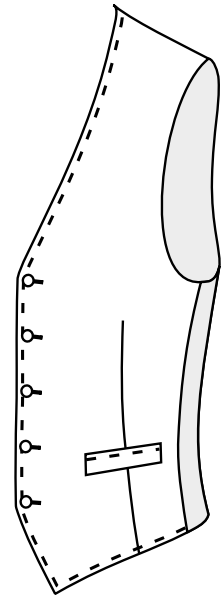
Code
5B1
HSE 1 mm

Code
5M1 *
Hand stitching 1 mm

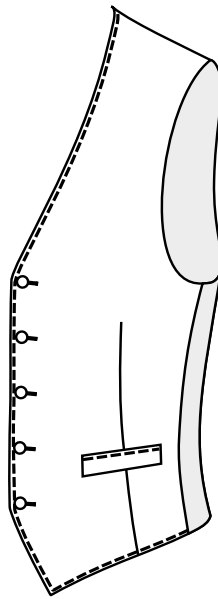


Code
5B6
HSE 6 mm

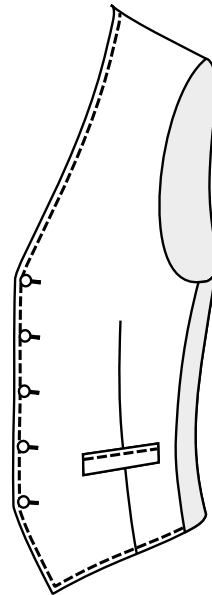
Code
5M6 *
Hand stitching 6 mm



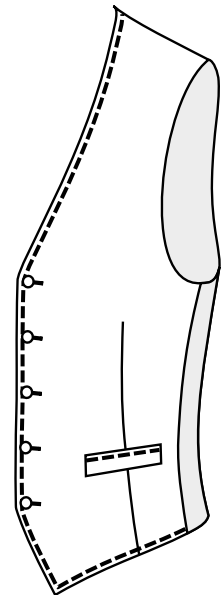
Code
5B7
HSE 6 mm, long stitch



Code
5S2
Top stitch 2 mm



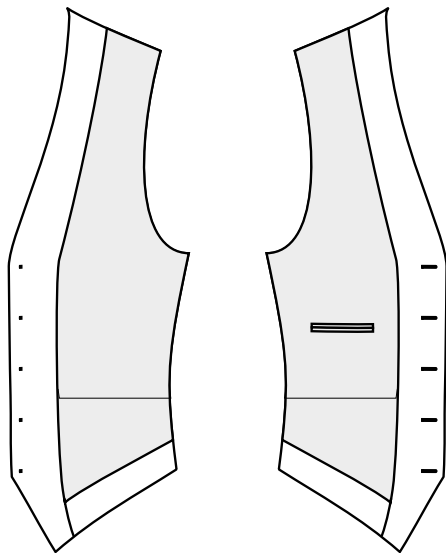
Code
5S5
Top stitch 5 mm



Code
5SS5
Top stitch 5 mm, thick thread

For the contrasts you can choose the colour of HSE * or stitching * from the lining colour card.

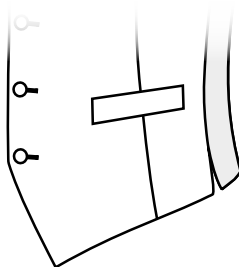




Code

IT

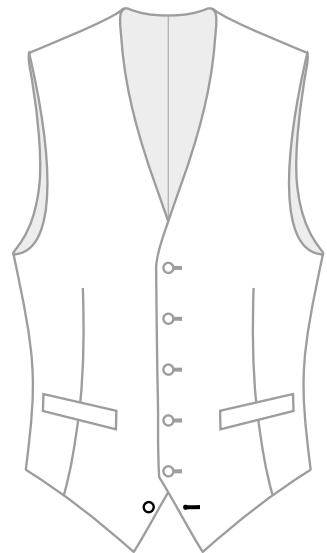
1 inside pocket
- left



Code

SS

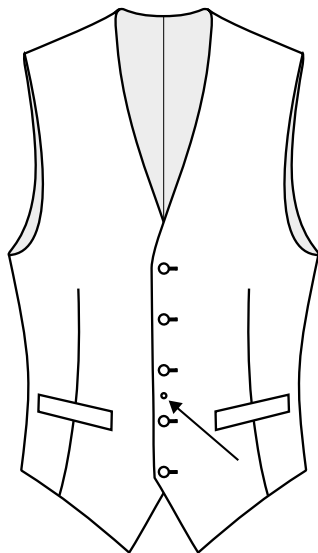
Side vents



Code

FB

Show button



Code

WB

Watch chain
buttonhole.
Between 2nd and 3rd
but.hole from bottom

Further style options

- FO Front without buttonholes
- SV Special embroidery
(Transfer file (pdf, jpg) + info about size,
positions and colour)

Material options

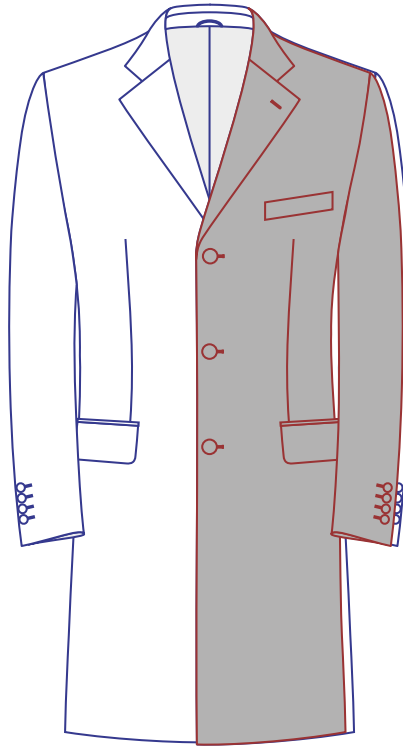
- Contrast - front button holes *

You can choose between these MODELS / SILHOUETTES:

**MODEL
BLUE Line**

Comfortable cut
Wider silhouette
Lower armhole
Straight cut

This block is available only for
Chesterfield type!!!



Silhouettes - Comparison

**MODEL
RED Line**

Close cut
Narrow silhouette
Higher armhole
Fitted cut

This block is available for all
overcoat types.

Furthermore you decide the SHOULDER SHAPE:

Shoulders
NORM
Normal shoulder

Shoulders
SOFT
Soft shoulder

Finally you determine the SLEEVE CROWN:

Sleeve Crown
NORM
Normal sleeve

Sleeve Crown
SHIRT
Shirt sleeve technology

Sleeve Crown
ROPE
Sleeve with ROPE

More information about the model and silhouettes can be found by the jacket description.

Available combinations:

| | BLUE Line | RED Line | | |
|------|-----------|----------|-------|-------|
| | NORM | NORM | ROPE | SHIRT |
| NORM | BLUNN | REDNN | REDNR | X |
| SOFT | BLUSN | REDSN | REDSR | REDSS |



Depending on the overcoat style there is a basic length and recommended range.:

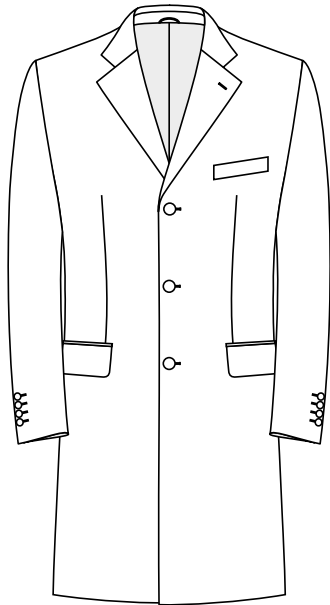
Code

1CH

Chesterfield

Basic length
100 cm

Recommended length
range
95 - 110 cm



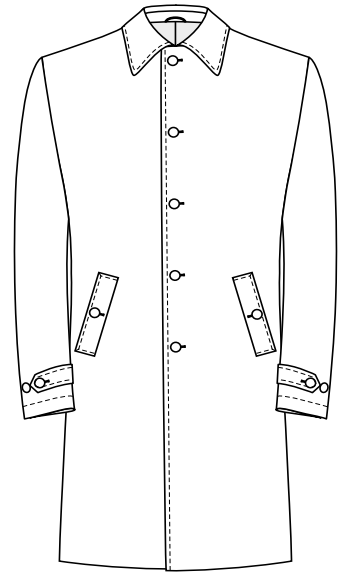
Code

1CR

Raincoat

Basic length
92 cm

Recommended length
range
85 - 100 cm



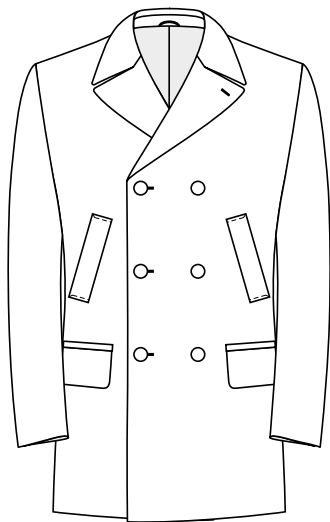
Code

1CP

Pea Coat

Basic length
82 cm

Recommended length
range
80 - 92 cm



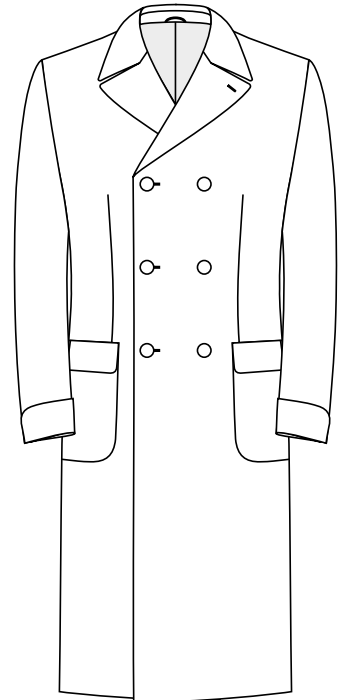
Code

1CU

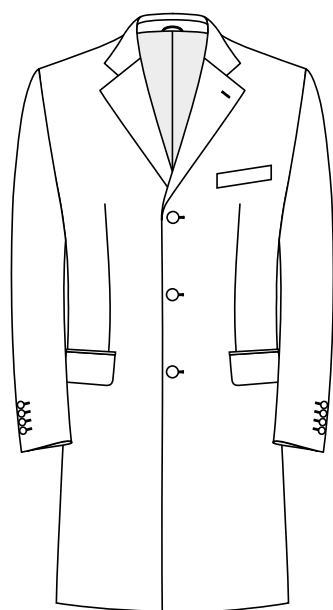
Ulster

Basic length
112 cm

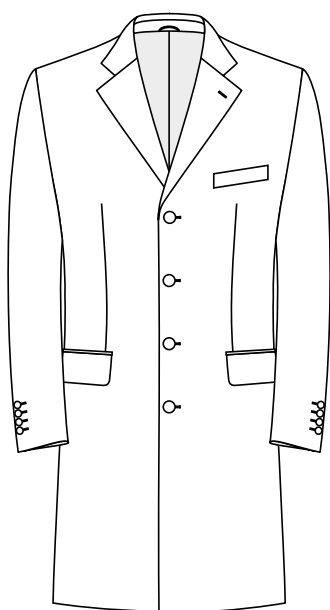
Recommended length
range
105 - 120 cm



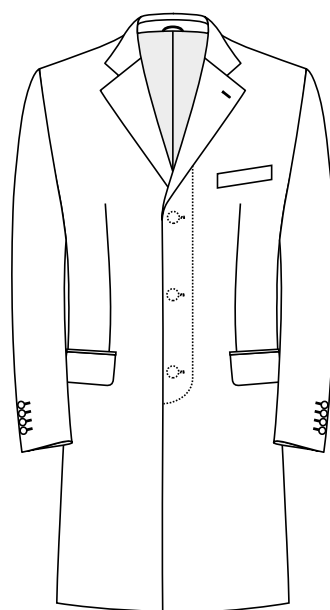
If the required length is outside of the recommended range, it can be changed using alterations!!!



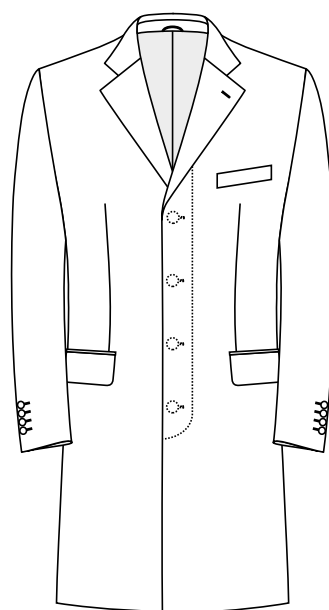
Code
2J3
SB, 3 buttons



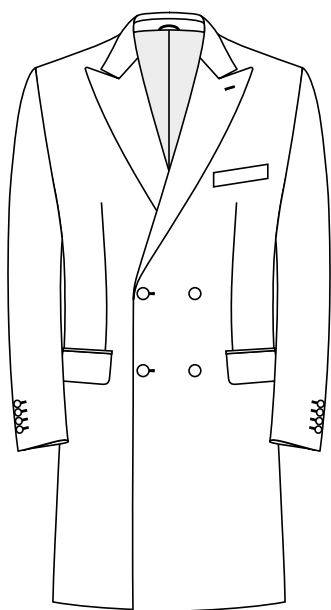
Code
2J4
SB, 4 buttons



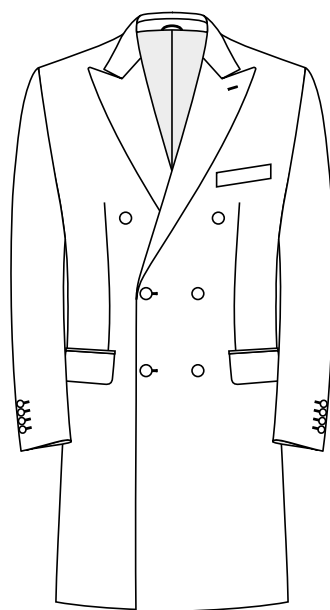
Code
2Z3
SB, fly front, 3 buttons



Code
2Z4
SB, fly front, 4 buttons

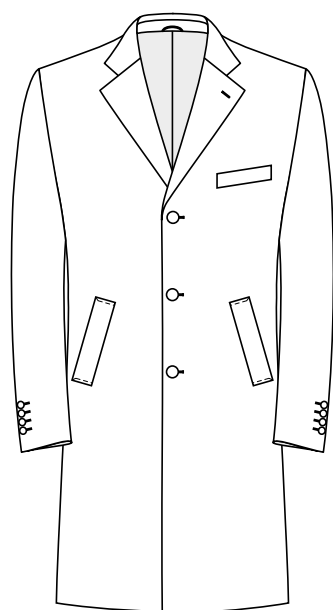


Code
2D4
DB, 4 x 2



Code
2D1
DB, 6 x 2

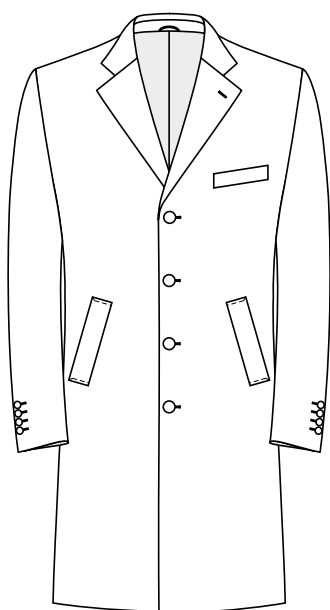




Code

2JL3

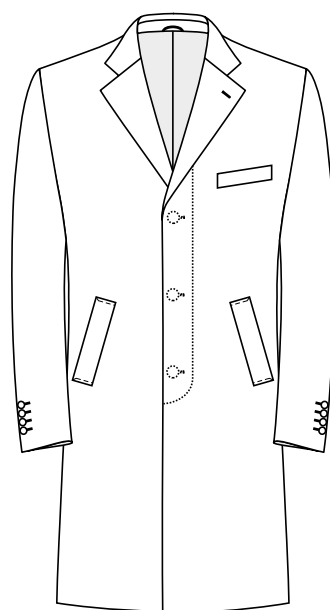
SB, 3 buttons, without
dart



Code

2JL4

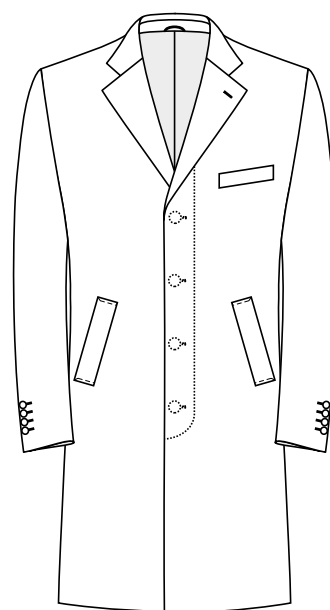
SB, 4 buttons, without
dart



Code

2ZL3

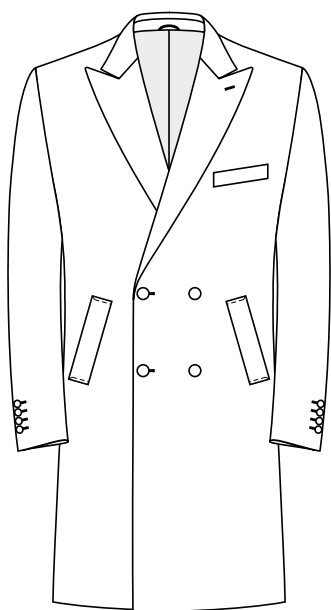
SB, 3 buttons, without
dart, fly front



Code

2ZL4

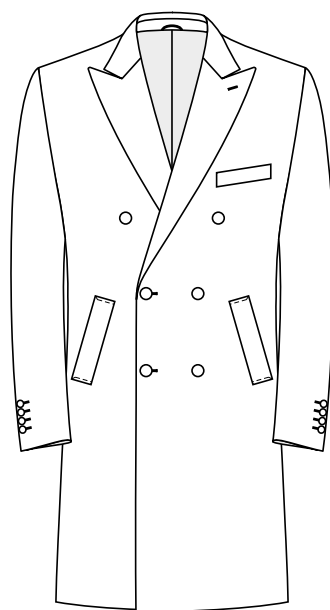
SB, 4 buttons, without
dart, fly front



Code

2DL4

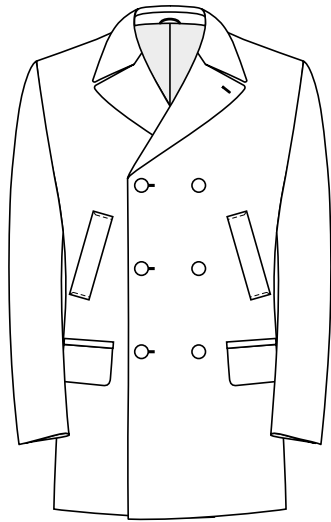
DB, 4 x 2, without dart



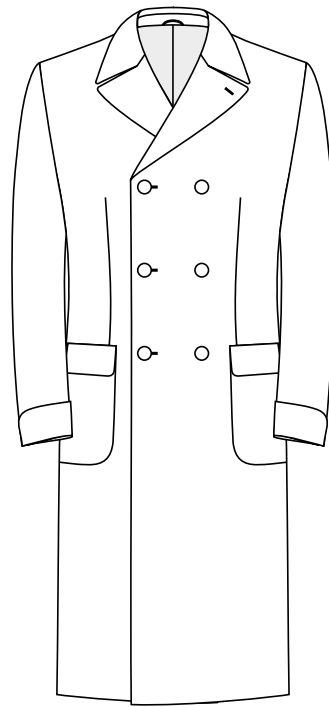
Code

2DL1

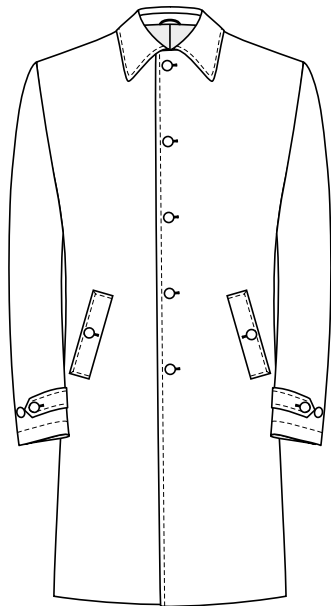
DB, 6 x 2, without dart



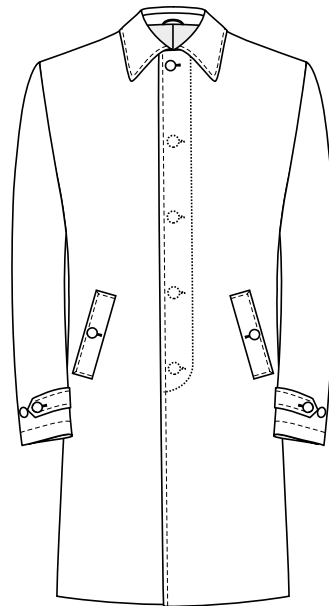
Code
2P6
Pea Coat, DB, 6 x 3



Code
2U6
Ulster, DB, 6 x 3

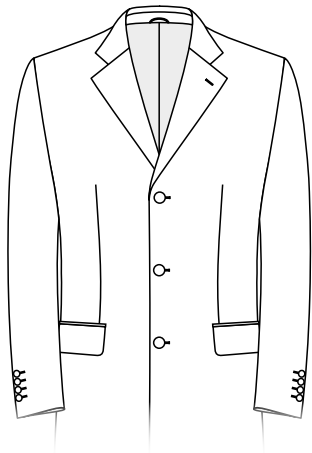


Code
2R5
Raincoat, SB, 5 buttons,
high collar



Code
2ZR5
Raincoat, SB, 5 buttons,
high collar, fly front

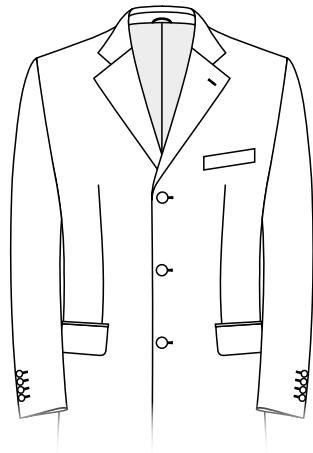




Code

4C1

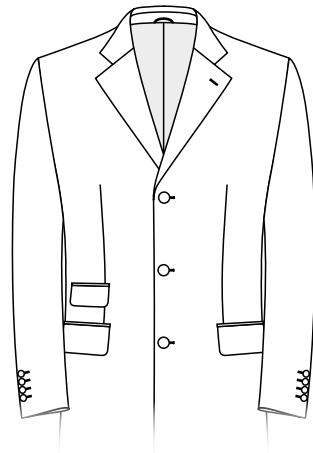
Without breast pocket,
flap side pockets



Code

4C2

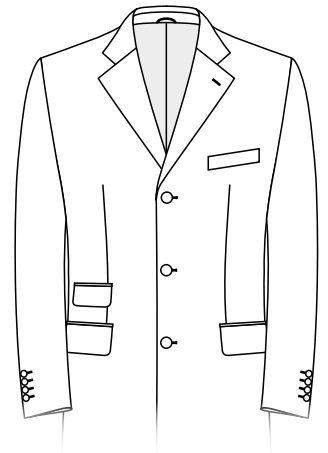
Welt breast pocket,
flap side pockets



Code

4E1

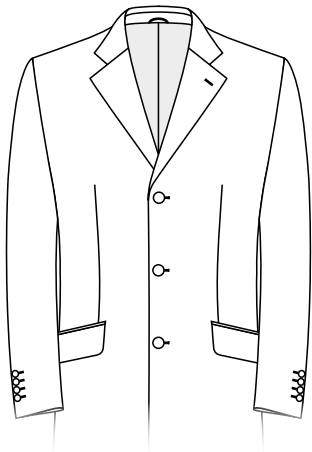
Without breast pocket,
flap side pockets,
ticket pocket



Code

4E2

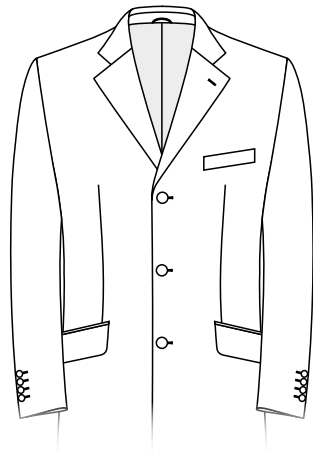
Welt breast pocket,
flap side pockets,
ticket pocket



Code

4D1

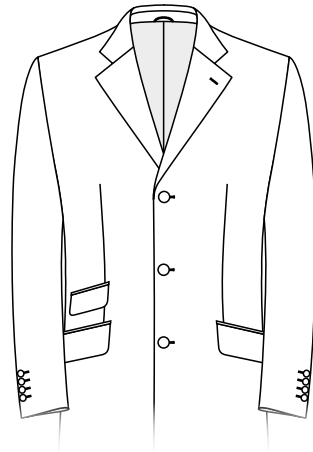
Without breast pocket,
slant flap side pockets



Code

4D2

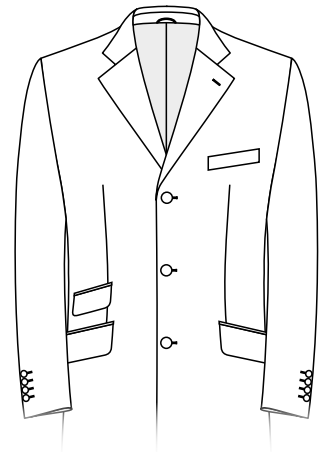
Welt breast pocket,
slant flap side pockets



Code

4F1

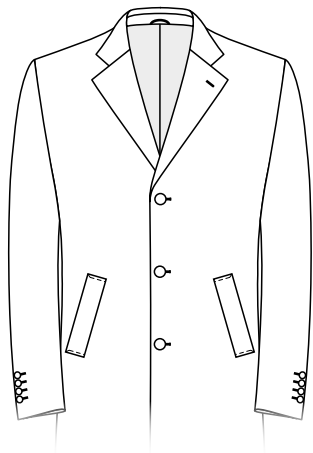
Without breast pocket,
slant flap side pockets,
ticket pocket



Code

4F2

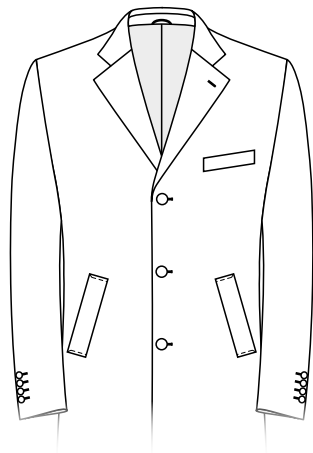
Welt breast pocket,
slant flap side pockets,
slant ticket pocket



Code

4M1

Without breast pocket,
slant welt side pockets

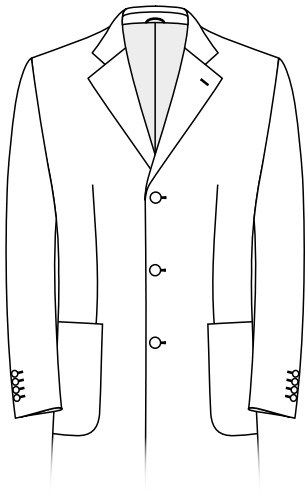


Code

4M2

Welt breast pocket,
slant welt side pockets

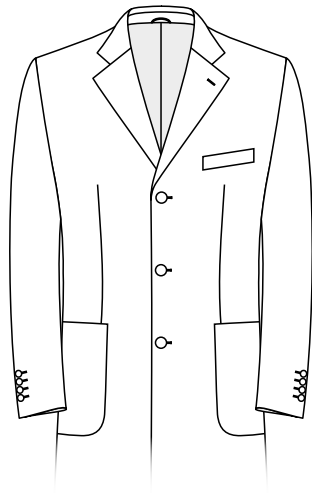
*This variant is possible only for fronts without
dart.*



Code

4A1

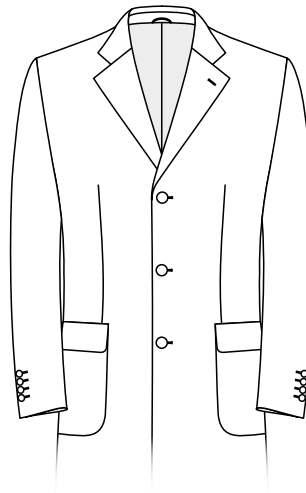
Without breast pocket,
side patch pockets



Code

4A2

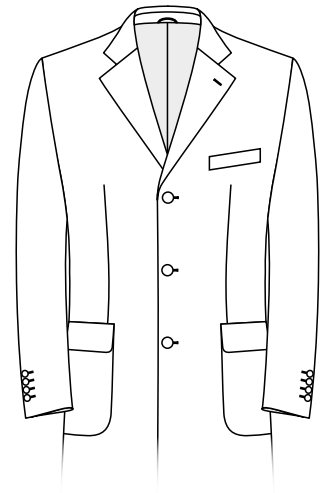
Welt breast pocket,
side patch pockets



Code

4H1

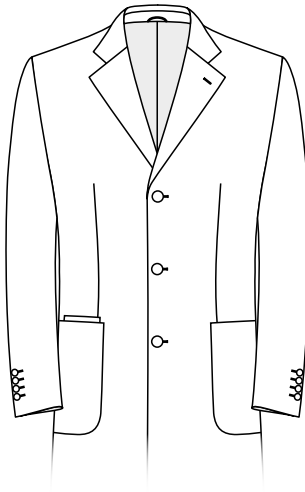
Without breast pocket,
side patch pockets
with flaps



Code

4H2

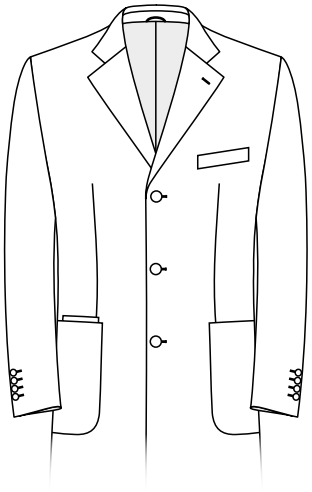
Welt breast pocket,
side patch pockets
with flaps



Code

4Q1

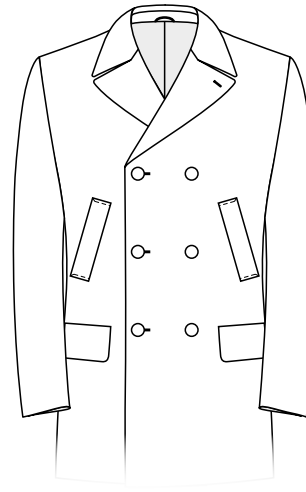
Without breast pocket,
side patch pockets,
patch ticket pocket



Code

4Q2

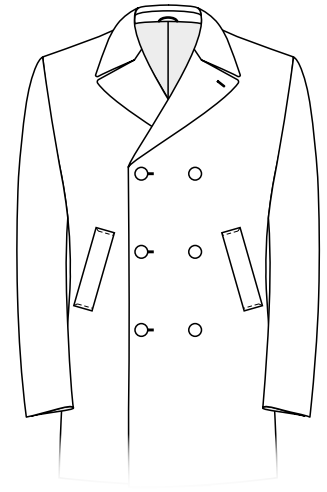
Welt breast pocket,
side patch pockets,
patch ticket pocket



Code

4PC1

Without breast pocket,
slant welt side pockets,
flap side pockets



Code

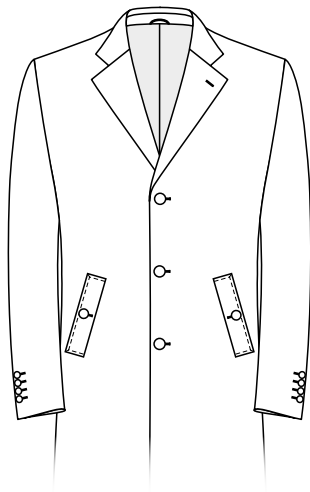
4PC

Without breast pocket,
slant welt side pockets,
higher position

Code

4M1B

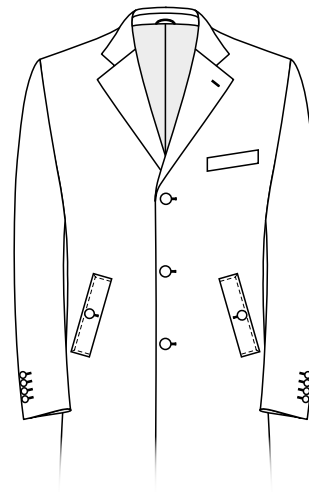
Without breast pocket,
slant welt side pockets
with button

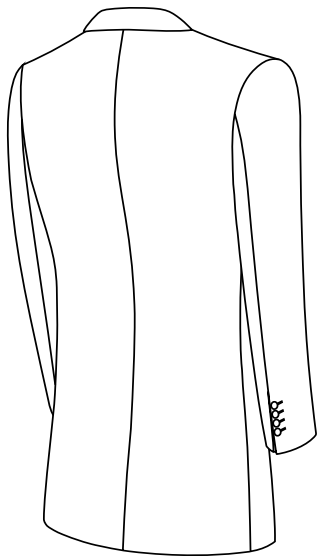
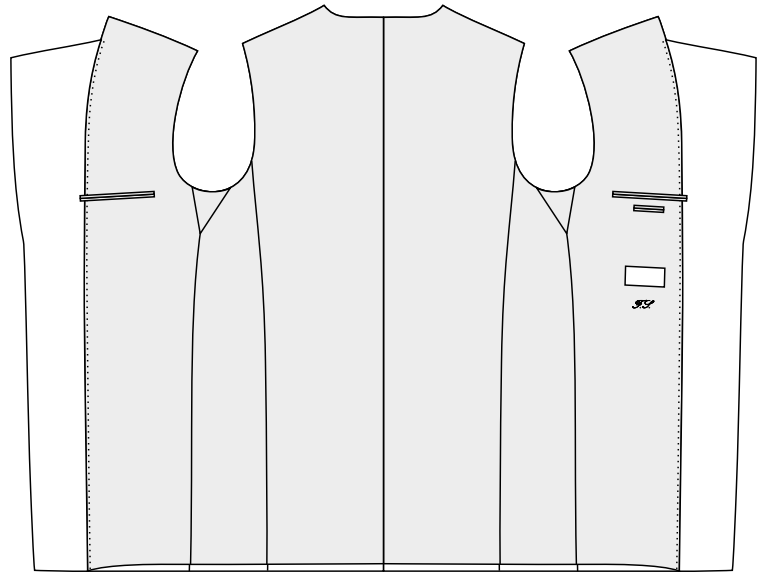


Code

4M2B

Welt breast pocket,
slant welt side pockets
with button

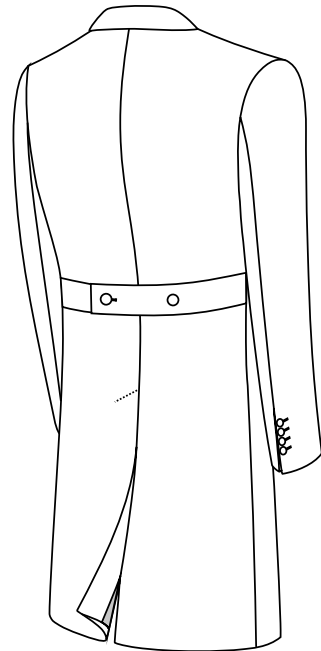




Code
3A1
Normal, plain back



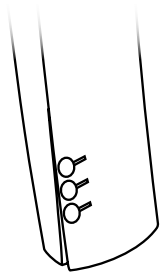
Code
3B1
Normal, centre vent



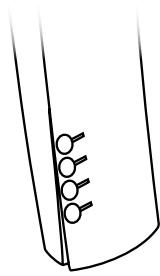
Code
3F1
Normal, centre vent,
half belt, 2 buttons

Sham cuff styles

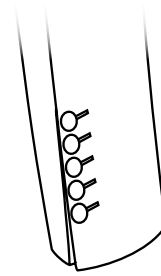
Buttons
side by side



Code
5S3
Sham cuffs, 3
buttons

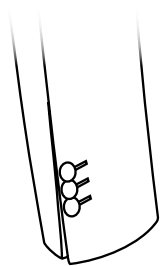


Code
5S4
Sham cuffs, 4
buttons

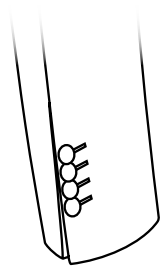


Code
5S5
Sham cuffs, 5
buttons

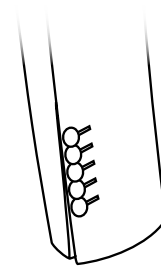
Kissing buttons



Code
5S3X
Sham cuffs, 3
buttons, kissing
buttons



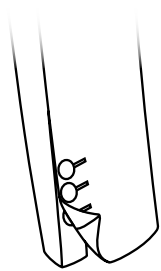
Code
5S4X
Sham cuffs, 4
buttons, kissing
buttons



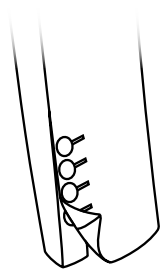
Code
5S5X
Sham cuffs, 5
buttons, kissing
buttons

Open cuff styles *

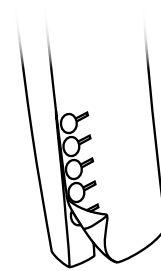
Buttons
side by side



Code
5O3
Real button
holes, 3 buttons

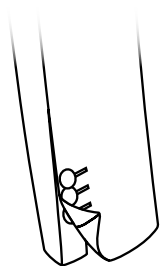


Code
5O4
Real button
holes, 4 buttons

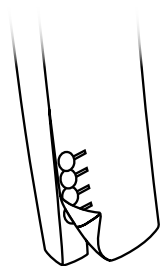


Code
5O5
Real button
holes, 5 buttons

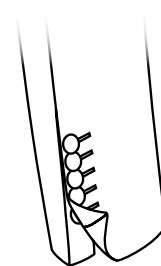
Kissing buttons



Code
5O3X
Real button
holes, 3 kissing
buttons



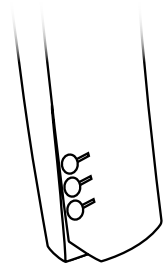
Code
5O4X
Real button
holes, 4 kissing
buttons



Code
5O5X
Real button
holes, 5 kissing
buttons



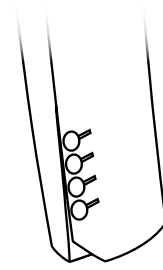
Open cuff styles *



Code

5AM3

Real button
holes, bevelled,
3 buttons

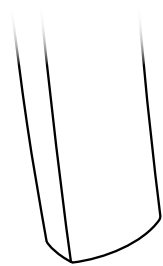


Code

5AM4

Real button
holes, bevelled,
4 buttons

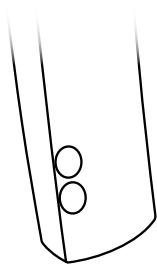
Closed seams styles



Code

5N

Closed seam,
without
buttonholes



Code

5L2

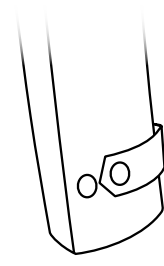
Closed seam, 2
big buttons



Code

5C

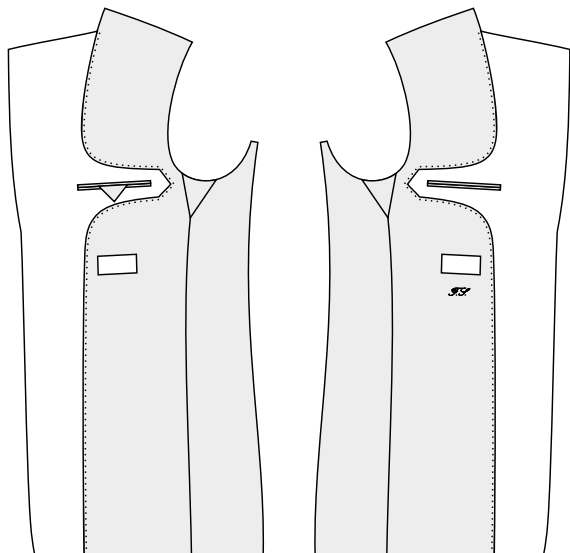
Closed seam,
turn up



Code

5R

Closed seam,
sleeve strap, 2
buttons

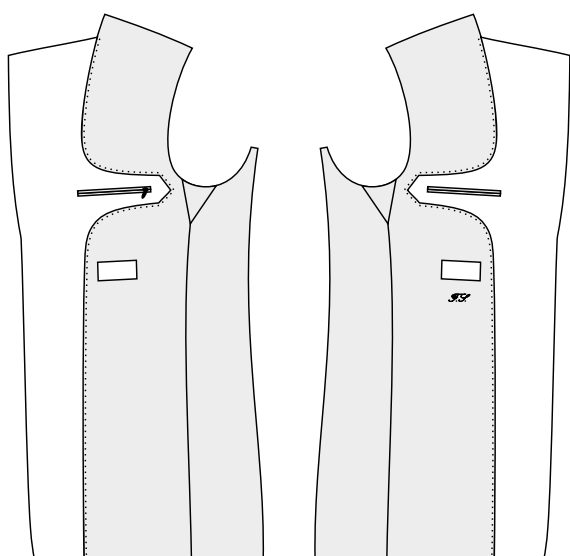


Standard

Code **6HMR** With tongue facing, 2 pockets, security pocket right

Code **6HML** With tongue facing, 2 pockets, security pocket left

Code **6HMB** With tongue facing, 2 pockets, security pockets - both

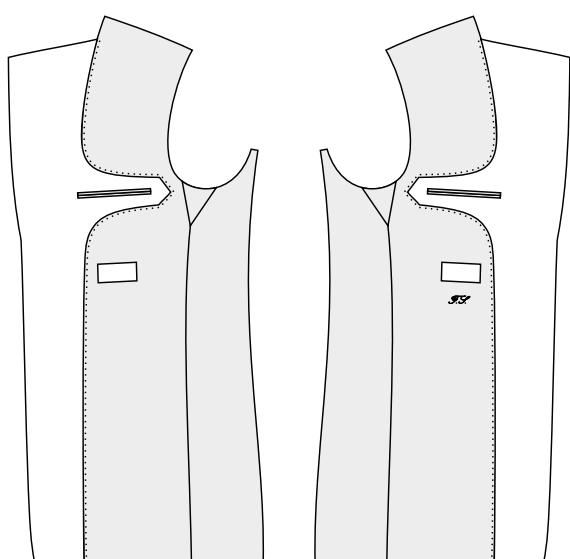


Standard

Code **6IMR** With tongue facing, 2 pockets, zip pocket right

Code **6IML** With tongue facing, 2 pockets, zip pocket left

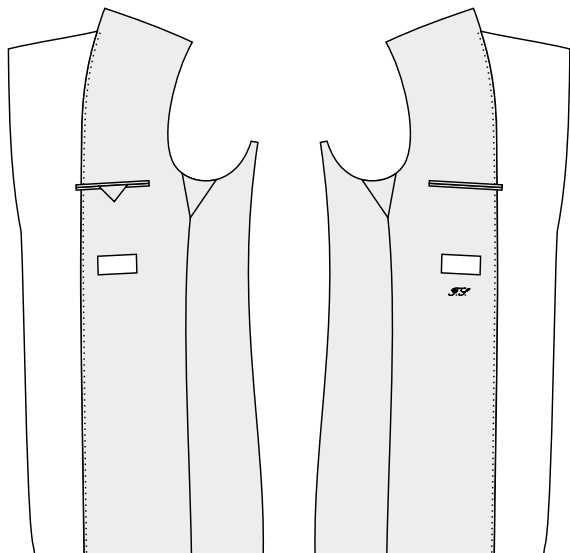
Code **6IMB** With tongue facing, 2 pockets, zip pockets - both



Code **6JM** With tongue facing, 2 pockets, no security fastening

*For contrasts you can choose the colour of inside pocket jettings * and columbia-stitching * from the lining colour card.*



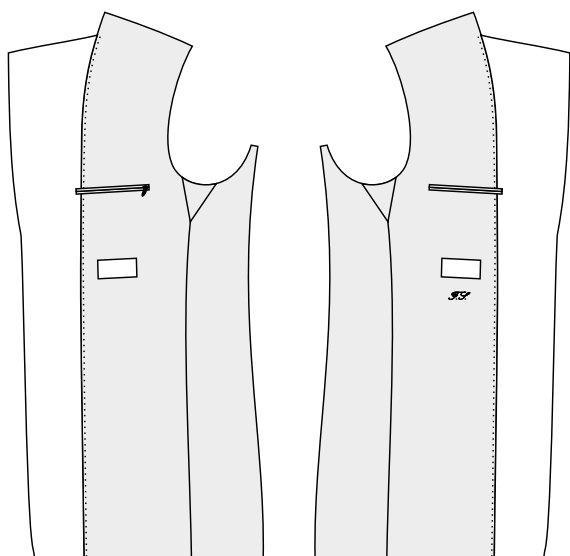


Standard

Code
6EMR Without tongue facing, 2 pockets,
security pocket right

Code
6EML Without tongue facing, 2 pockets,
security pocket left

Code
6EMB Without tongue facing, 2 pockets,
security pockets - both

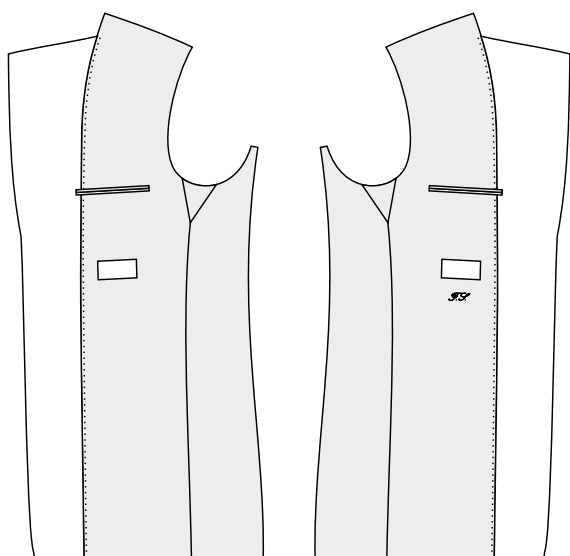


Standard

Code
6FMR Without tongue facing, 2 pockets, zip
pocket - right

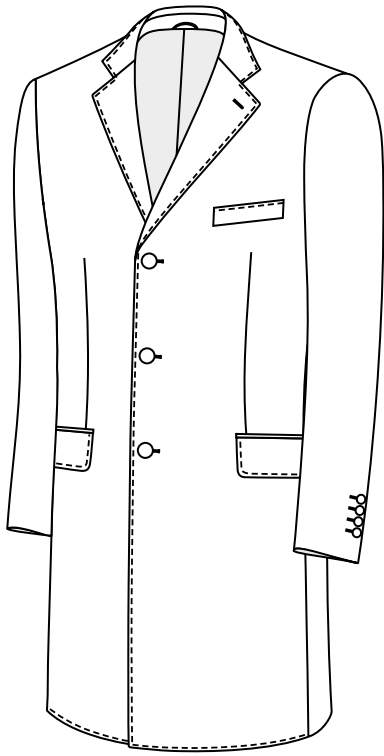
Code
6FML Without tongue facing, 2 pockets, zip
pocket - left

Code
6FMB Without tongue facing, 2 pockets, zip
pockets - both

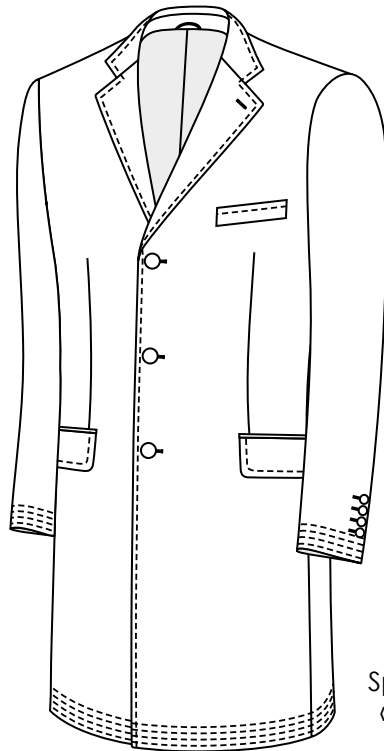


Code
6GM Without tongue facing, 2 pockets,
without security fastening

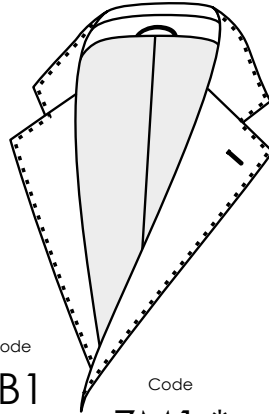
*For contrasts you can choose the colour of inside pocket
jettings * and columbia-stitching * from the lining colour
card.*



Top stitch / HSE is applied on the edge

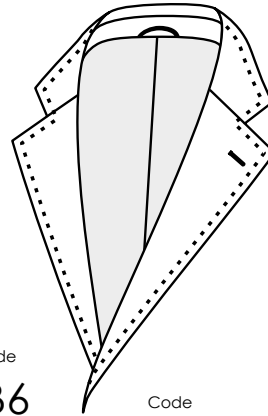


Code
7C
Special stitching
«Covert Coat»



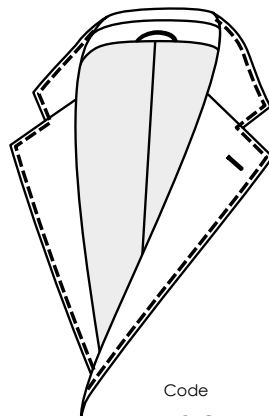
Code
7B1
HSE 1 mm

Code
7M1 *
Hand stitching 1 mm

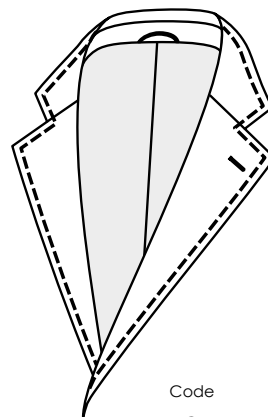


Code
7B6
HSE 6 mm

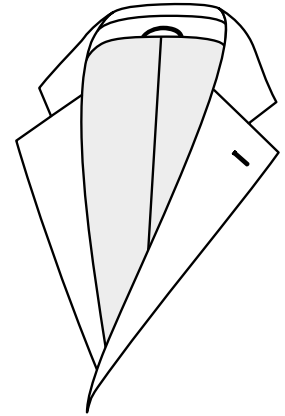
Code
7M6 *
Hand stitching 6 mm



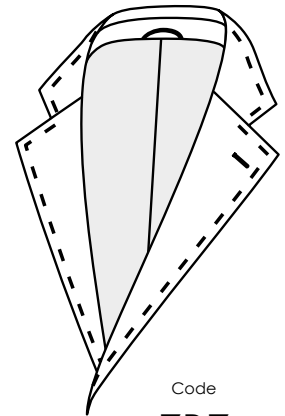
Code
7S2
Top stitch 2 mm



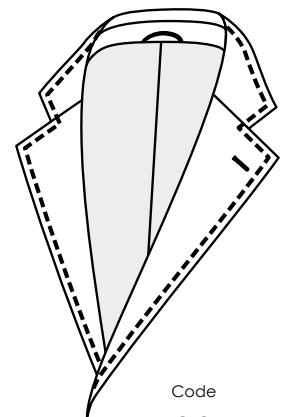
Code
7S5
Top stitch 5 mm



Code
7A
Without stitching



Code
7B7
HSE 6 mm, long stitch



Code
7SS5
Top stitch 5 mm, thick thread

For the contrasts you can choose the colour of HSE * or stitching * from the lining colour card.





Code
SC
Storm collar



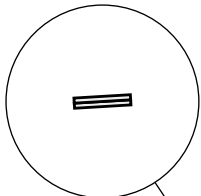
Code
SBH
Second
buttonhole on
right lapel



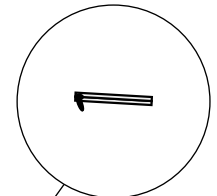
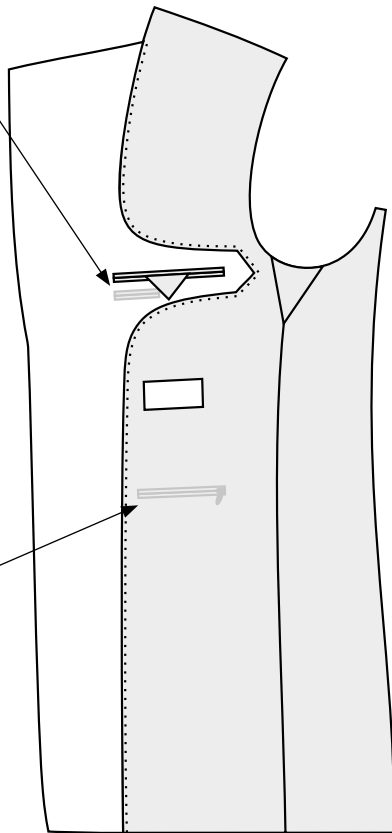
Code
OR
Without lapel
buttonhole



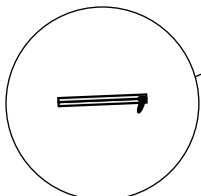
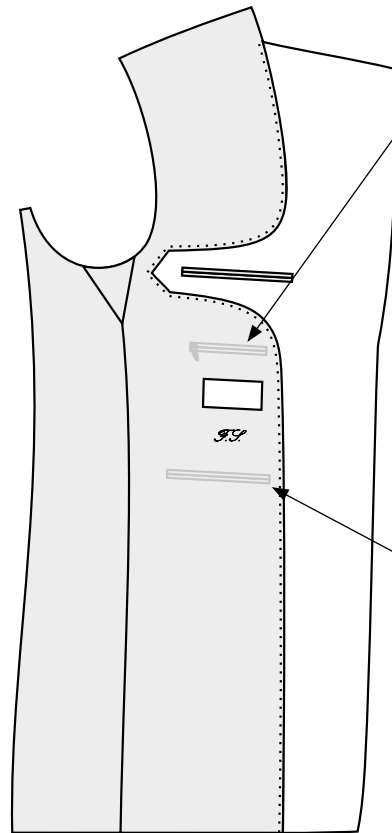
Code
EPA
Epaulet



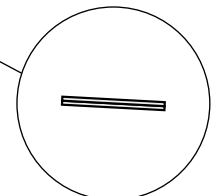
Code
TK *
Additional pen
pocket right



Code
TB *
Pocket for glasses
with zip under
tongue



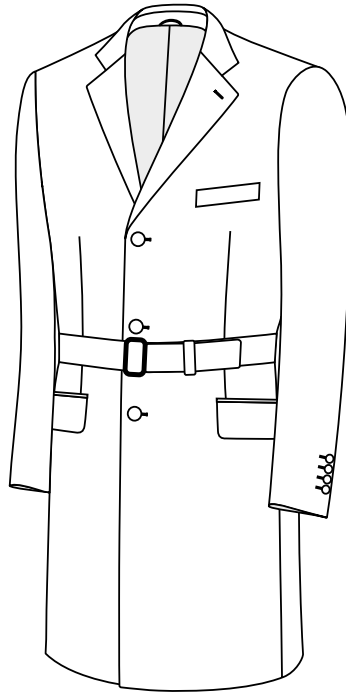
Code
HT *
Mobile phone
pocket with zip



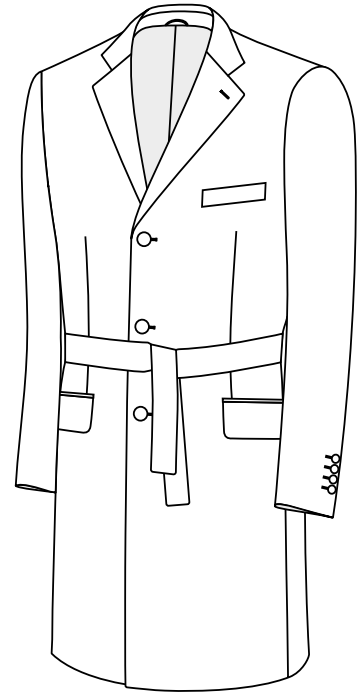
Code
TA *
Newspaper pocket
instead of ticket
pocket



Code
BV
Centre vent with
button



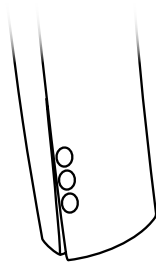
Code
BUC *
Belt with buckle



Code
BLT *
Tie belt



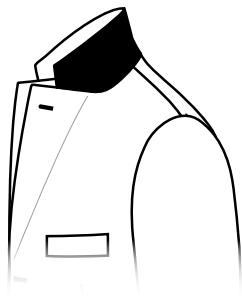
Code
AOO
Sleeves without
buttonholes and
buttons



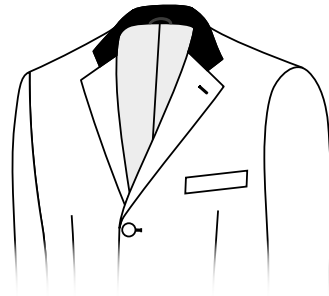
Code
AOM
Sleeves without
buttonholes and
buttons on

- FO Front without buttonholes
- SCHK No padding
- SCHB Additional padding - both
- SCHL Additional padding - left
- SCHR Additional padding - right
- FR Flower buttonhole - lapel
- HF Heavier front fusing

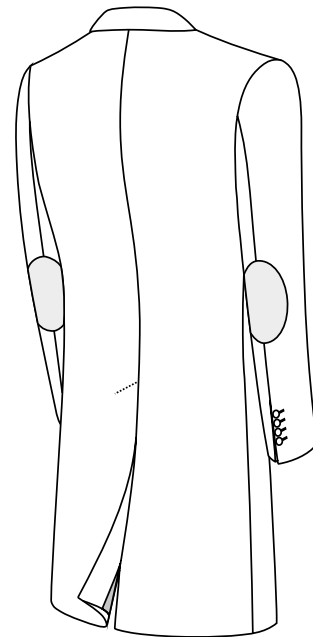




Fabric undercollar *



Contrast - collar *



Alcantara elbow patches round *

Contrasts - Stitching

- Contrast - lapel button hole *
- Contrast - front button holes *
- Contrast - 1st sleeve button hole from bottom *
- Contrast - 2nd sleeve button hole from bottom *
- Contrast - sleeve all button holes *
- Contrast - monogram
- Contrast - sleeve lining

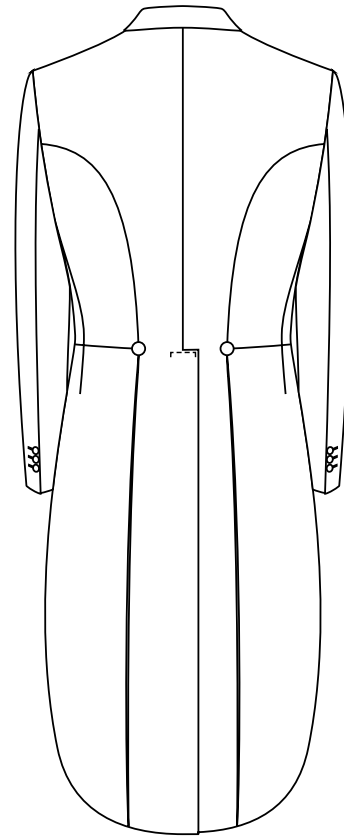
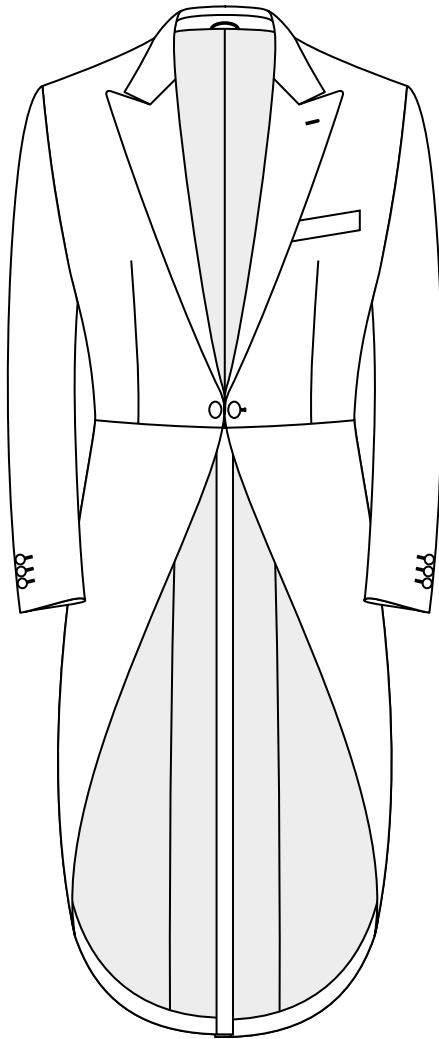
Contrasts - Materials

- Contrast - felt collar *
- Contrast - jettings inside pockets *
- Leather buttonhole lapel *
- Wooden hanger *

MODEL
BLUE Line

TYPE
1C
Morning coat

BASIC
2X4
SB, 1 button,
peak lapel



BACK
3D
Body seam, tail

POCKETS

4G2 Welt breast pocket

INSIDE

6P 2 in breast pockets

CUFF

All options are the same as jacket

STITCHING

7A Without stitching

7B1 HSE 1 mm

7B6 HSE 6 mm

7M1 Hand stitching 1 mm

7M6 Hand stitching 6 mm

Style options

- FO Front without buttonholes
- HF Heavier front fusing
- AOO Sleeves without buttonholes and buttons
- AOM Sleeves without buttonholes and buttons on
- SCHB Additional padding - both
- SCHK No padding
- SCHL Additional padding - left
- SCHR Additional padding - right
- FR Flower buttonhole - lapel
- OR Without lapel buttonhole
- SBH Second buttonhole on right lapel

Material options

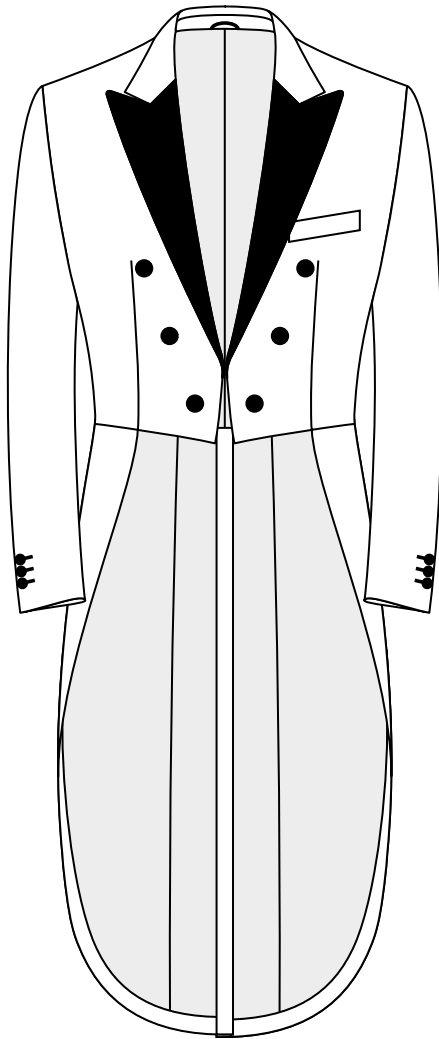
- Contrast - felt collar *
- Contrast - front button holes *
- Contrast - 1st sleeve button hole from bottom *
- Contrast - 2nd sleeve button hole from bottom *
- Contrast - sleeve all button holes *
- Contrast - jettings inside pockets *
- Contrast - sleeve lining
- Wooden hanger *
- Contrast - monogram



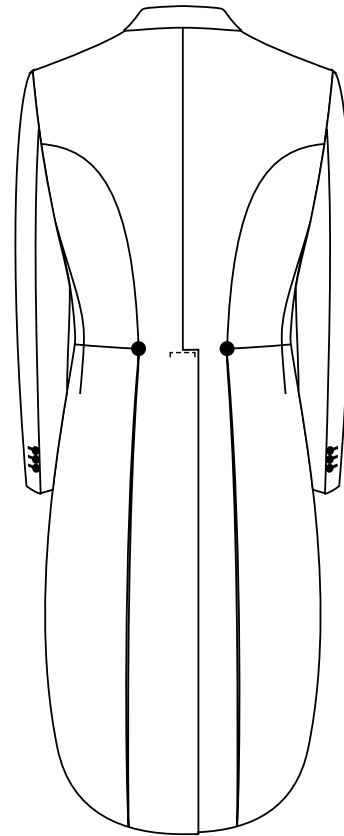
MODEL
BLUE Line

TYPE
1F
Dress coat

BASIC
2T1
SB, 6 blind
buttons, peak
lapel



BACK
3D
Body seam, tail



POCKETS

4G2 Welt breast pocket

INSIDE

6P 2 in breast pockets

CUFF

All options are the same as jacket

Style options

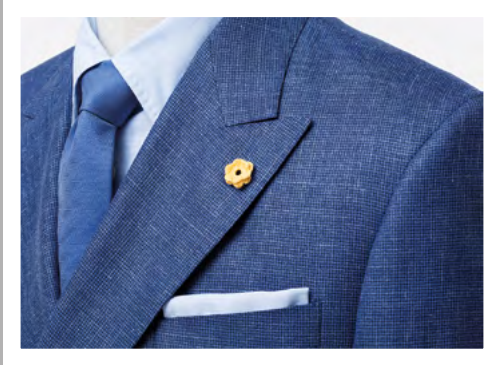
- FO Front without buttonholes
- HF Heavier front fusing
- AOO Sleeves without buttonholes and buttons
- AOM Sleeves without buttonholes and buttons on
- SCHB Additional padding - both
- SCHK No padding
- SCHL Additional padding - left
- SCHR Additional padding - right
- FR Flower buttonhole - lapel
- OR Without lapel buttonhole

STITCHING

7A Without stitching

Material options

- Contrast - felt collar *
- Contrast - front button holes *
- Contrast - 1st sleeve button hole from bottom *
- Contrast - 2nd sleeve button hole from bottom *
- Contrast - sleeve all button holes *
- Contrast - jettings inside pockets
- Contrast - sleeve lining
- Silk - lapel and jettings *
- Wooden hanger *
- Contrast - monogram



MADE TO MEASURE