



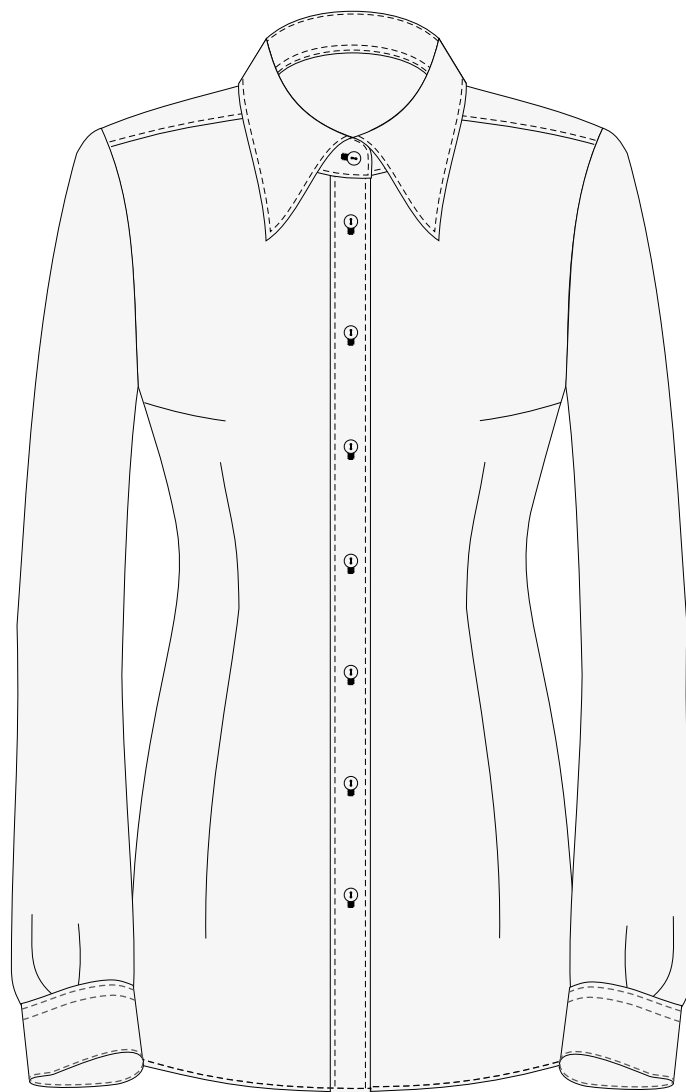
.....

# BLOES II.

.....

**Made to Measure**

BLOES II.	SILHOUET	2
	MODEL	3
	KRAAG	4
	SLUITING	8
	ZAK	11
	ONDERKANT	12
	MOUW TYPE	13
	MOUWSPLIT	13
	ONDERKANT MOUW	15
	MONOGRAM	19
	STIKSELS	20
	MATERIAAL OPTIES	21



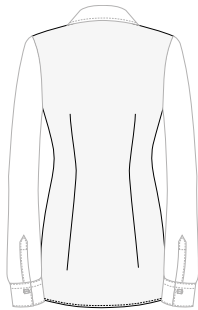
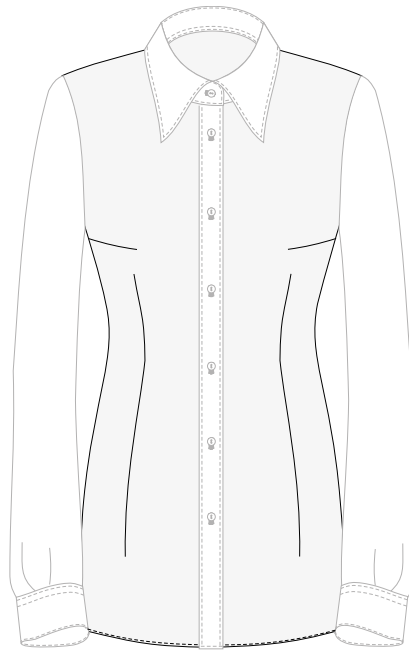
Kode  
**B**  
 Silhouet B



Kode

**A04**

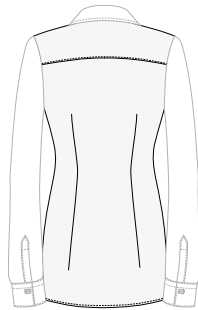
Voorpand met borst  
en taillenaad



Variant

**05**

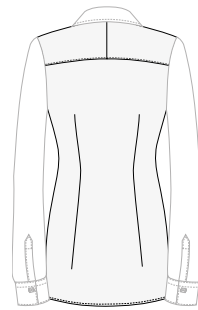
Rug zonder  
schouderstuk,  
2 rugcoupnaden



Variant

**06**

Rug met  
schouderstuk,  
2 rugcoupnaden



Variant

**07**

Rug met dubbel  
schouderstuk,  
2 rugcoupnaden

De diepte van de op Voor en Achterpand Coupnaden, resp. is mogelijk om dit probleem op te lossen met de maatveranderingen. Zie de maatveranderingen in de veranderings mogelijkheden in het handboek voor veranderingen.



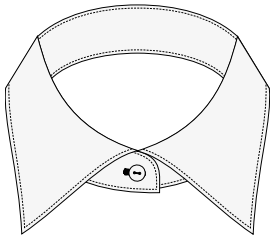


Kraag  
met 1 knoop  
Kraaghoogte 30, 35 en 40 mm

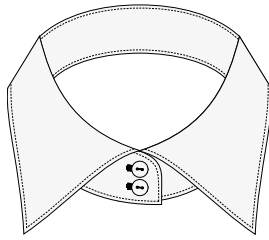
Kraag  
met 2 knopen  
Kraaghoogte 40, 45 en 50 mm

Kraag  
met 3 knopen  
Kraaghoogte uitsluitend 50 mm

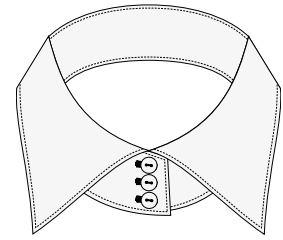
Windsor



Kode  
**BA1**

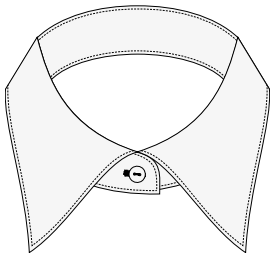


Kode  
**BA2**

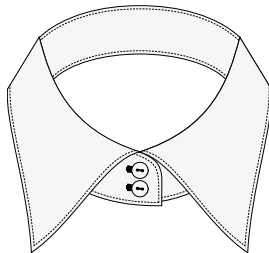


Kode  
**BA3**

Kent

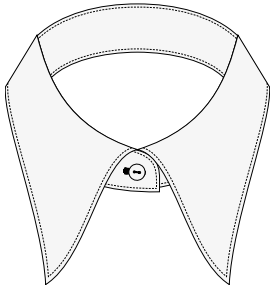


Kode  
**BB1**

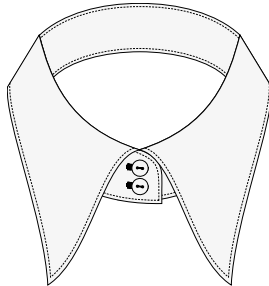


Kode  
**BB2**

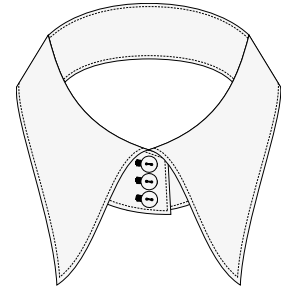
London



Kode  
**BC1**

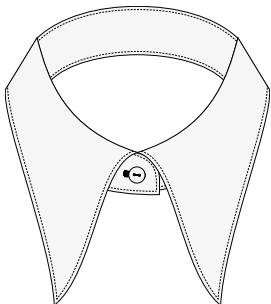


Kode  
**BC2**

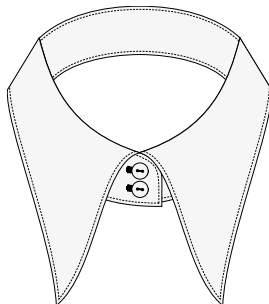


Kode  
**BC3**

King

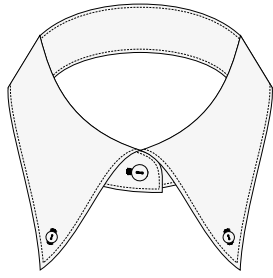


Kode  
**BD1**



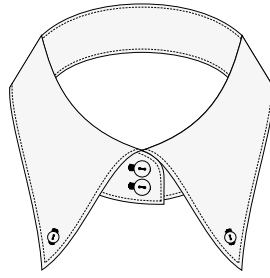
Kode  
**BD2**

Kraag met 1 knoop  
Kraaghoogte 30, 35 en 40 mm



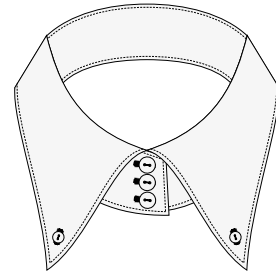
Kode  
**BEJ1**

Kraag met 2 knopen  
Kraaghoogte 40, 45 en 50 mm



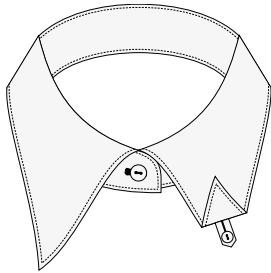
Kode  
**BEJ2**

Kraag met 3 knopen  
Kraaghoogte uitsluitend 50 mm

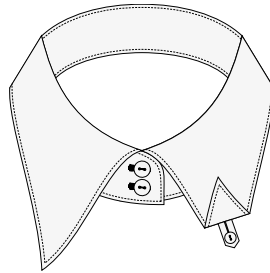


Kode  
**BEJ3**

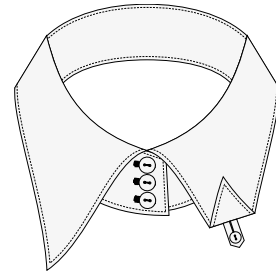
Button Down



Kode  
**BFJ1**

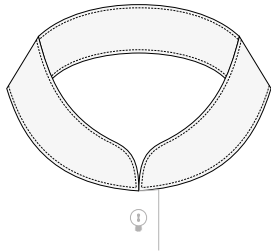


Kode  
**BFJ2**



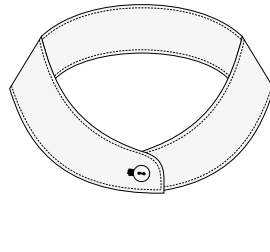
Kode  
**BFJ3**

Button Down, verdeckte sluiting



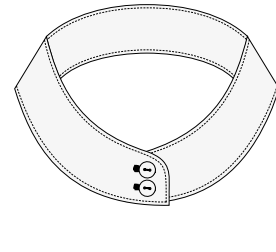
Kode  
**BG0**

Kraaghoogte  
35 mm



Kode  
**BG1**

Kraaghoogte  
30, 40 mm

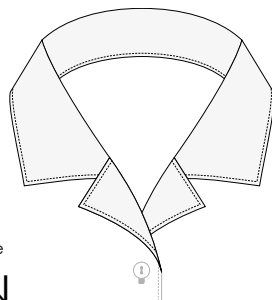


Kode  
**BG2**

Kraaghoogte  
40 mm

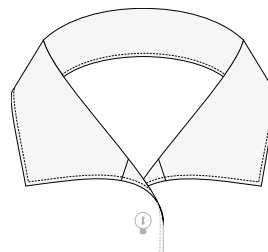
Nehru kraag

Casual kraag



Kode  
**BN**

Kraag Vario



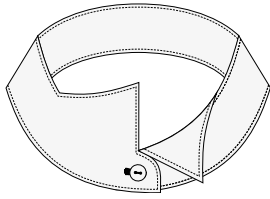
Kode  
**BO**

Kraaghoogte  
35 mm

Uitsluitend met voorpanden  
C021 !



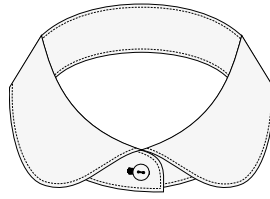
## Fashion kraag



Kode

**BH1**

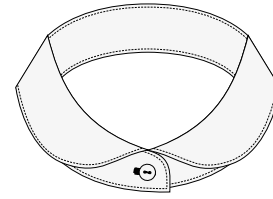
Vleugel kraag, zonder naad,  
1 knoop  
Kraaghoogte  
35 mm



Kode

**BM1**

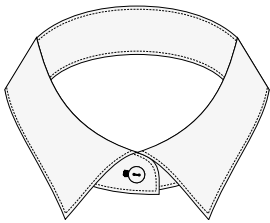
Kraag Penny, round  
(London), 1 knoop  
Kraaghoogte 30, 35 en 40 mm



Kode

**BU1**

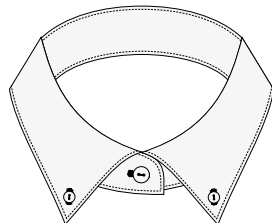
Kraag Eton, 1 knoop  
Kraaghoogte 30, 35 en 40 mm



Kode

**BT1**

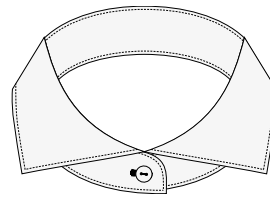
Kraag Tiny, 1 knoop  
Kraaghoogte  
30 mm



Kode

**BS1**

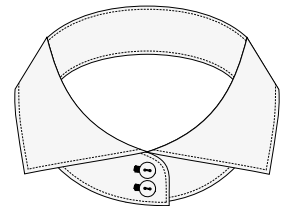
Kraag Smart, 1 knoop  
Kraaghoogte  
35 mm



Kode

**BQ1**

Kraag Hai, 1 knoop  
Kraaghoogte  
30, 40 mm



Kode

**BQ2**

Kraag Hai, 2 knoops  
Kraaghoogte  
40 mm

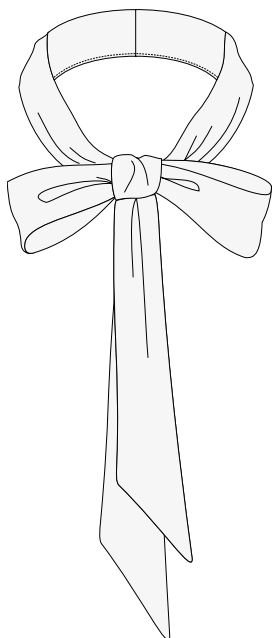
Kraaglengte voor verschillende vormen en hoogtes:	Model / Stand	30 mm	35 mm	40 mm	45 mm	50 mm
	Windsor	73	78	83	92	100
	Kent	73	78	83	92	100
	London	75	80	86	92	97
	King	78	83	89	95	100
	Button Down	65	70	75	80	85
	Vleugel kraag	---	55	---	---	---
	Tiny / Smart	55	60	---	---	---
	Hai	---	85	90	---	---

Kode

**BGT**

Kraag voor vlinderdas  
Kraaghoogte  
35 mm

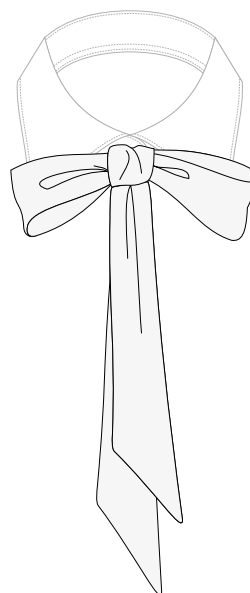
Uitsluitend met voorpanden  
C021 !



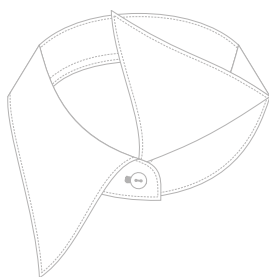
Kode

**EBT**

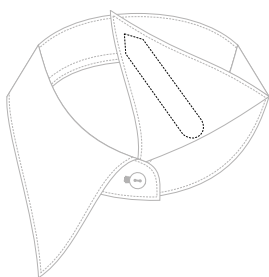
Extra strik das



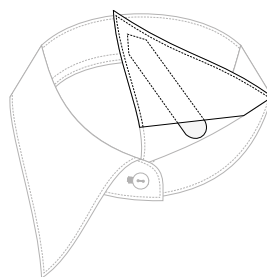
### Kraagbalijnen



Standaard  
Zonder balijnen

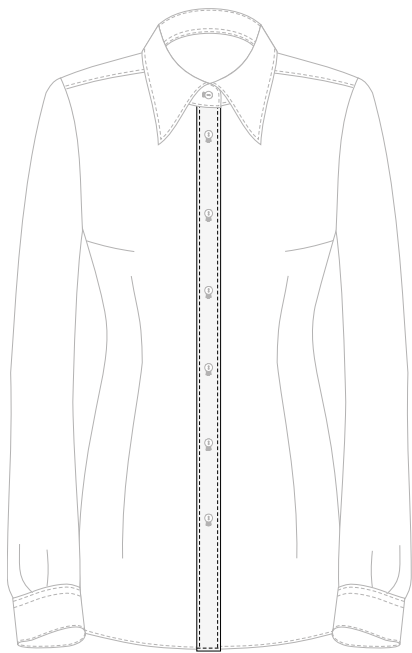


Optie  
**KSL02**  
Met balijnen

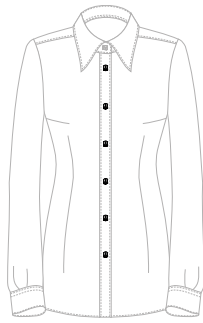


Optie  
**KSL03**  
Losse balijnen

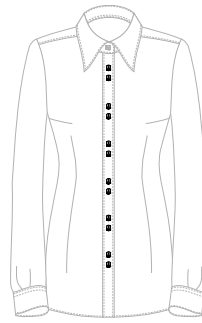




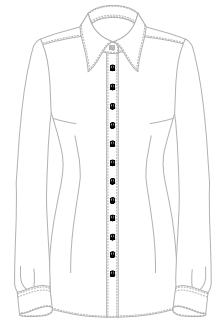
Kode  
**C011**  
Met knooplijst



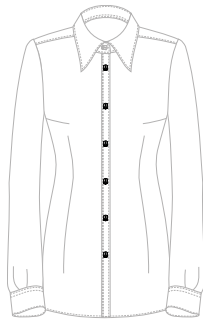
Variant  
**301**  
Knooplijst 30 mm,  
normale knoopsluiting



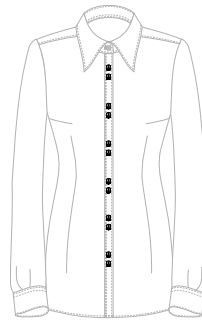
Variant  
**302**  
Knooplijst  
30 mm, gepaarde  
knoopsluiting



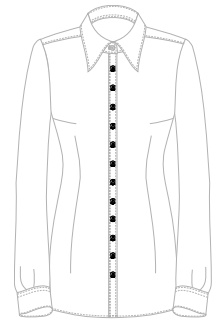
Variant  
**304**  
Knooplijst 30 mm,  
dubbele knoopsluiting



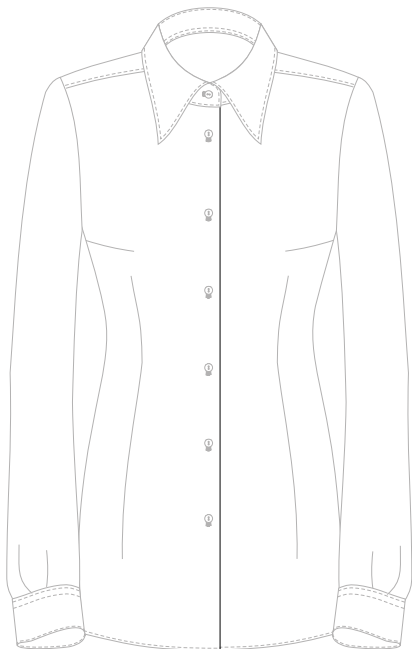
Variant  
**231**  
Knooplijst 23 mm,  
normale knoopsluiting



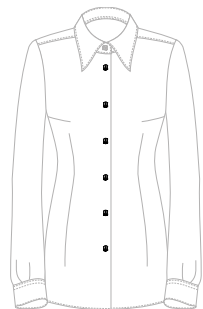
Variant  
**232**  
Knooplijst 23 mm,  
gepaarde knoopsluiting



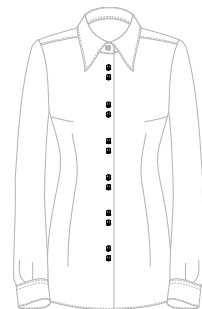
Variant  
**234**  
Knooplijst 23 mm,  
dubbele knoopsluiting



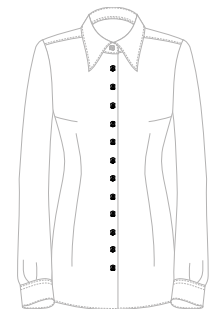
Kode  
**C021**  
Enkele knoopsluiting



Variant  
**001**  
Normale knoopsluiting

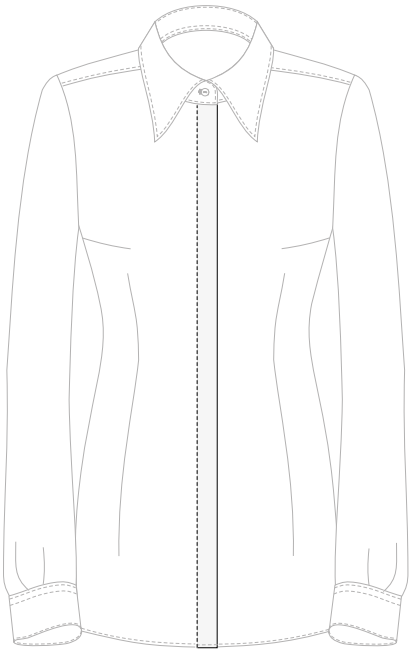


Variant  
**002**  
Gepaarde  
knoopsluiting



Variant  
**004**  
Dubbele  
knoopsluiting

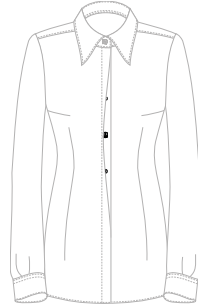




Kode

**C031**

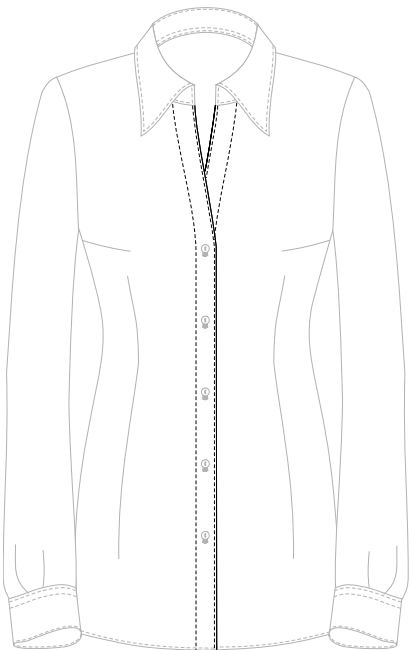
Verdekte sluiting



Variant

**301**

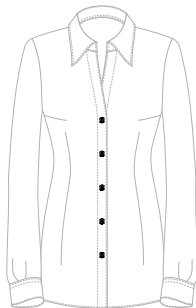
Knooplijst 30 mm, normale  
knoopsluiting



Kode

**C041**

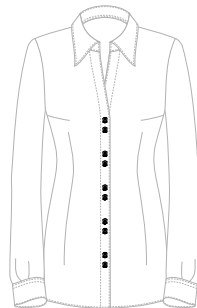
Enkele knoopsluiting,  
open neklijn



Variant

**001**

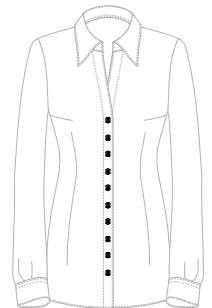
Normale knoopsluiting



Variant

**002**

Gepaarde  
knoopsluiting

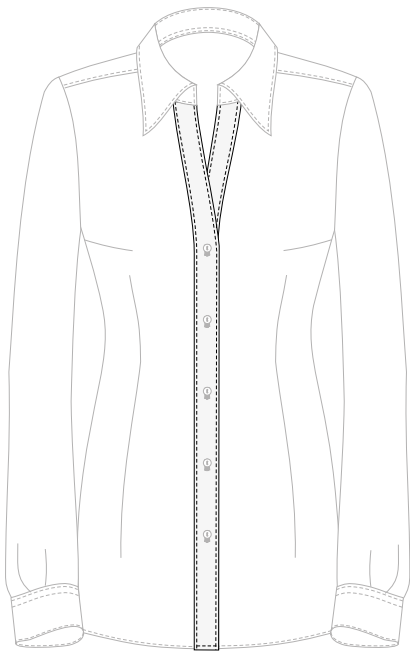


Variant

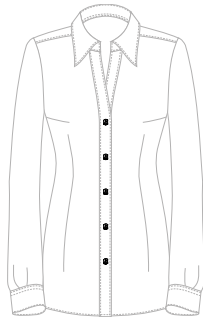
**004**

Dubbele  
knoopsluiting

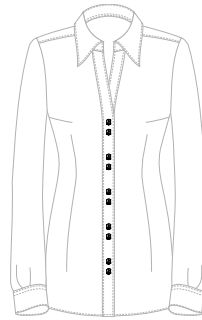




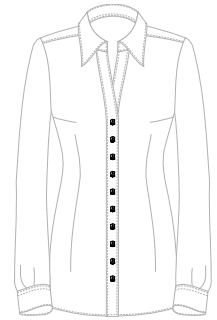
Kode  
**C051**  
Dubbele knooplijst,  
met open neklijn



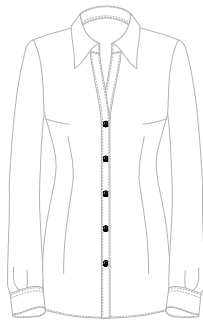
Variant  
**301**  
Knooplijst 30 mm,  
normale knoopsluiting



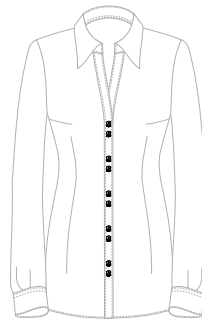
Variant  
**302**  
Knooplijst  
30 mm, gepaarde  
knoopsluiting



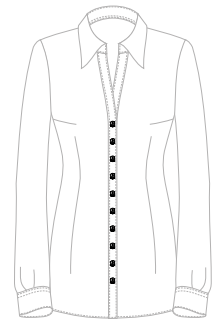
Variant  
**304**  
Knooplijst 30 mm,  
dubbele knoopsluiting



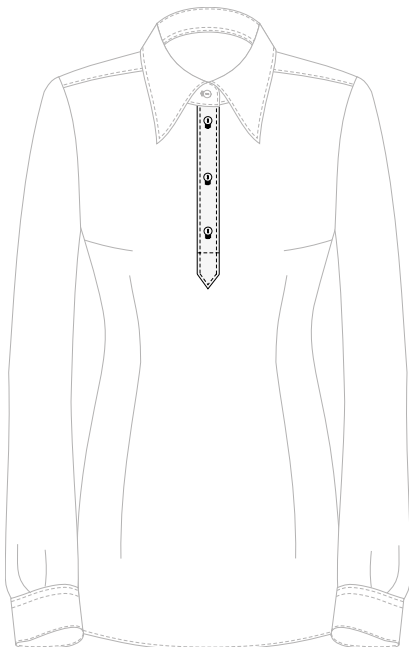
Variant  
**231**  
Knooplijst 23 mm,  
normale knoopsluiting



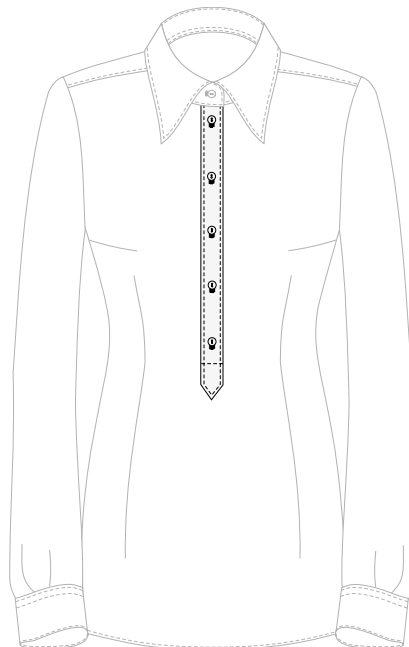
Variant  
**232**  
Knooplijst 23 mm,  
gepaarde knoopsluiting



Variant  
**234**  
Knooplijst 23 mm,  
dubbele knoopsluiting

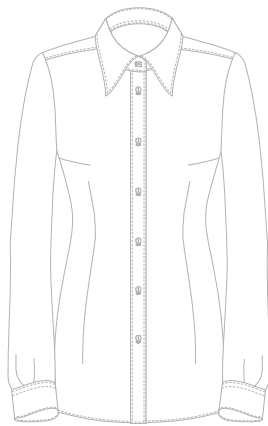


Kode  
**C061**  
Polo Shirt, 3 sluitknopen  
Voorpas breedte 30 mm  
Voorpas lengte 20 cm

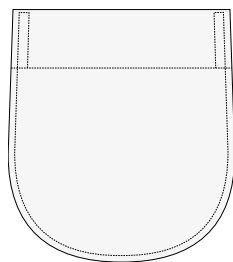


Kode  
**C071**  
Polo Shirt, 5 sluitknopen  
Voorpas breedte 30 mm  
Voorpas lengte 32 cm

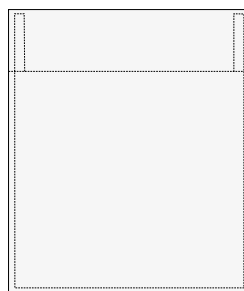
Kode  
**D00**  
Zonder zakken



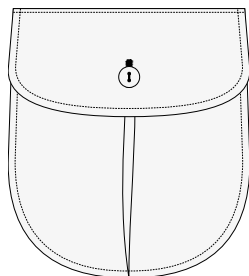
Kode  
**D01**  
Ronde zak



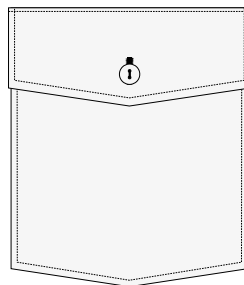
Kode  
**D02**  
Rechte zak



Kode  
**D03**  
Zak met plooi en klep



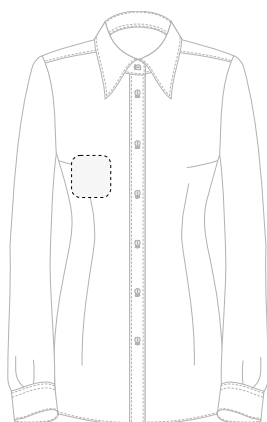
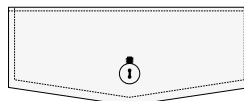
Kode  
**D04**  
Punt zak met klep



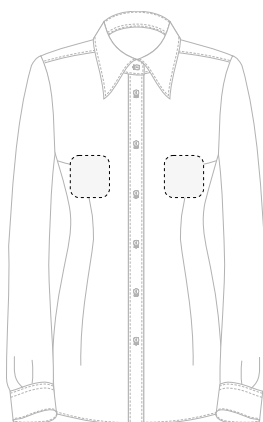
Kode  
**D05**  
Ronde klep maar  
zonder zak



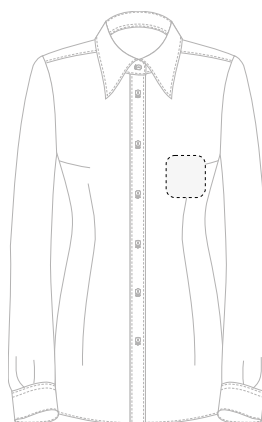
Kode  
**D06**  
Punt klep maar  
zonder zak



Variant  
**R**  
Rechts

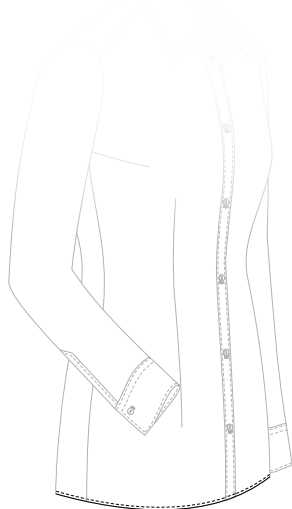


Variant  
**B**  
Beide zijden



Variant  
**L**  
Links

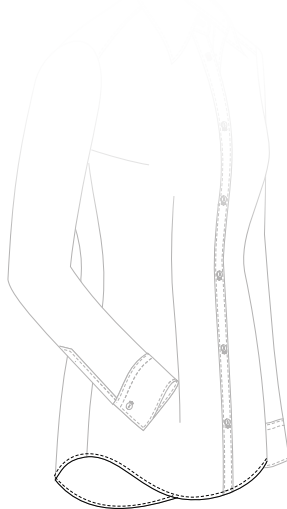




Kode

**E01**

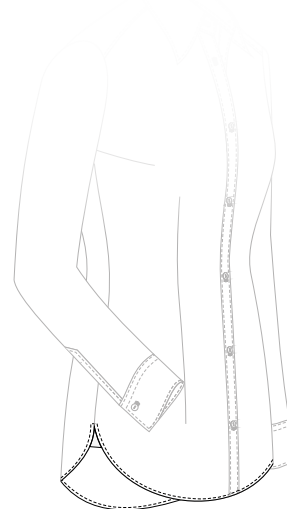
Onderkant recht



Kode

**E02**

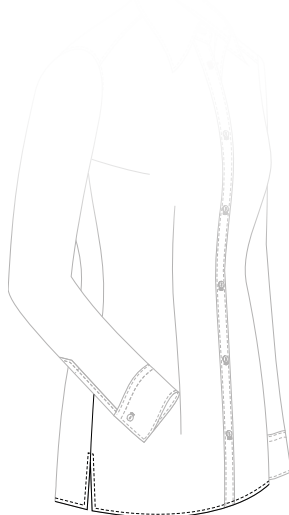
Onderkant rond



Kode

**E03**

Onderkant overhemd  
rond met vlinder  
*(In de kleur van het hemd)*



Kode

**E04**

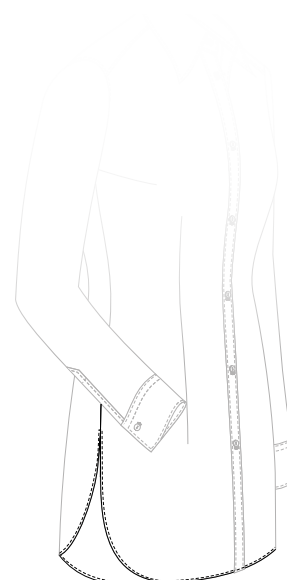
Onderkant met  
splitten



Variant

**01**

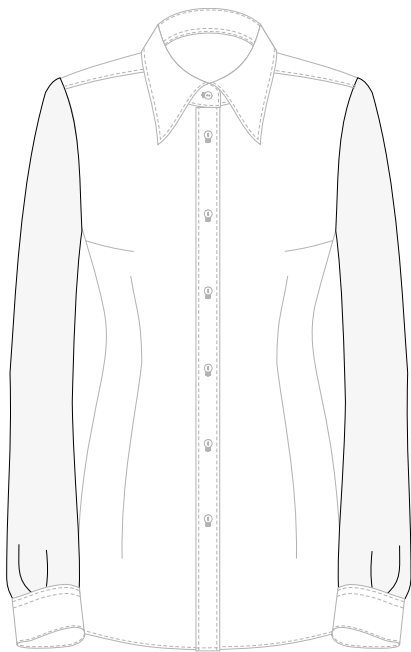
Rechte onderkant,  
splitten van 6 cm



Variant

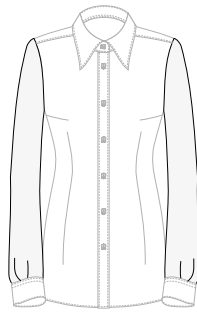
**02**

Ronde onderkant,  
splitten van 15 cm

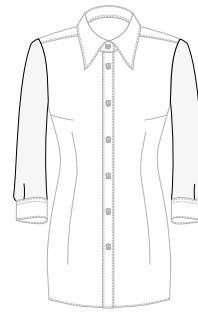


Kode  
**F03**  
Crown sleeves

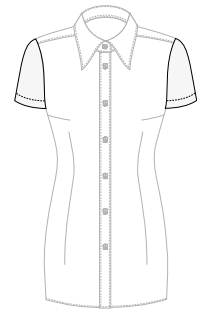
## MOUW TYPE



Variant  
**01**  
Lange mouw

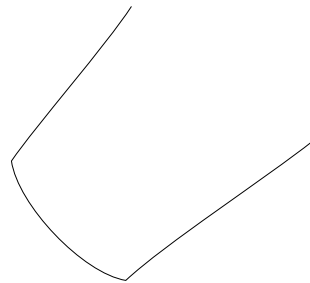


Variant  
**02**  
3/4 mouw

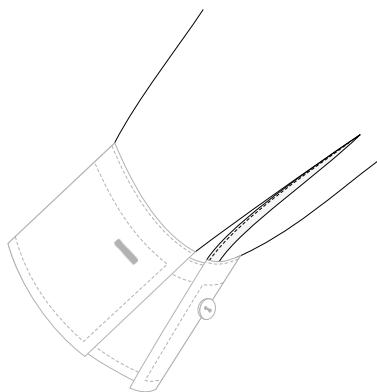


Variant  
**03**  
Korte mouw

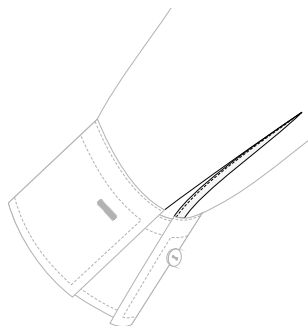
## MOUWSPLIT



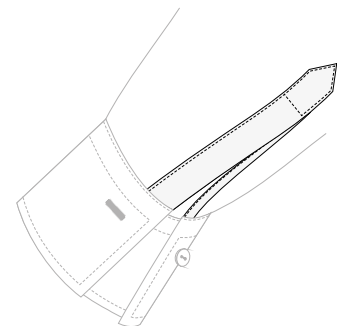
Kode  
**G00**  
Mouw zonder split



Kode  
**G01**  
Mouw zonder  
plooiën, met split

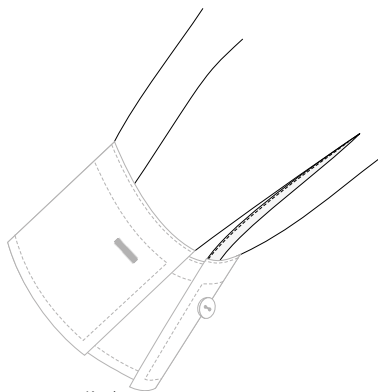


Variant  
**01**  
Piped vent



Variant  
**03**  
Mouw met  
mouwhuisje, zonder  
knoop

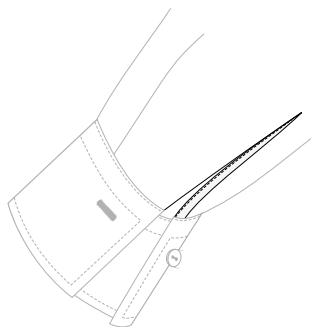




Kode

**G02**

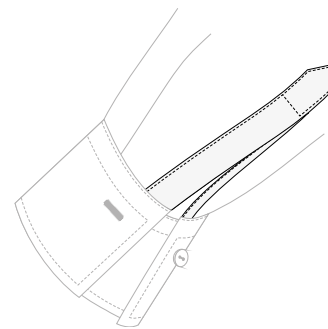
Mouw met 1 plooi,  
met split



Variant

**01**

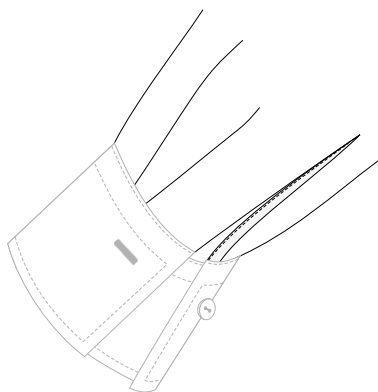
Piped vent



Variant

**03**

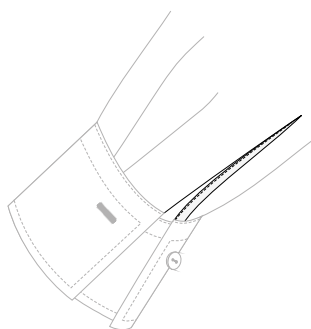
Mouw met  
mouwhuisje, zonder  
knoop



Kode

**G03**

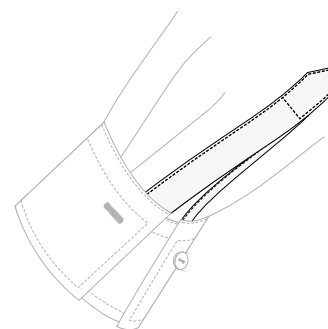
Mouw met 2 plooiën,  
met split



Variant

**01**

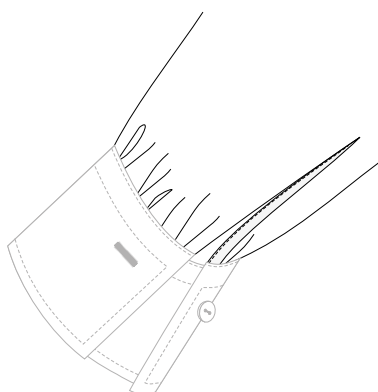
Piped vent



Variant

**03**

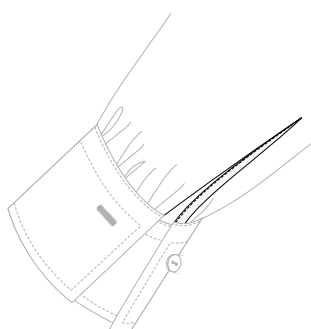
Mouw met  
mouwhuisje, zonder  
knoop



Kode

**G04**

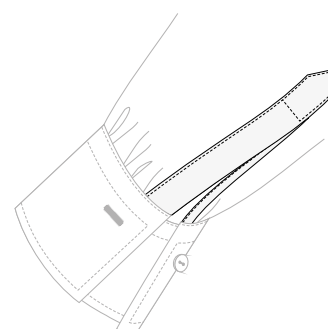
Mouw geplooid, met  
split



Variant

**01**

Piped vent



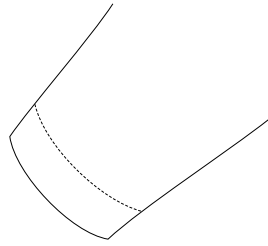
Variant

**03**

Mouw met  
mouwhuisje, zonder  
knoop



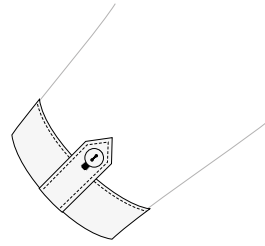
## Korte mouwen



Kode

**H02**

Zonder omslag,  
omgeslagen  
en doorgestikt

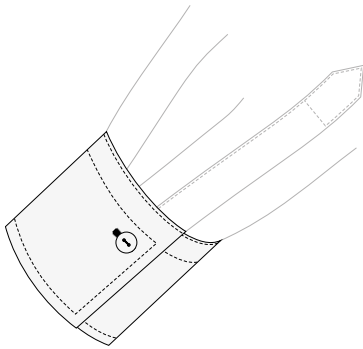


Kode

**H04**

Korte mouw, omslag  
doorgestikt met lus

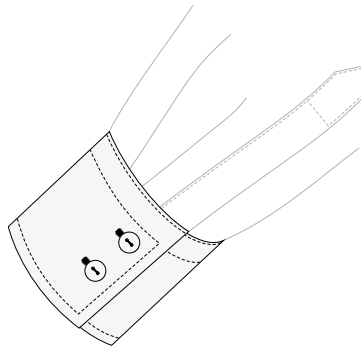
Enkel manchet  
recht



Kode

**H051**

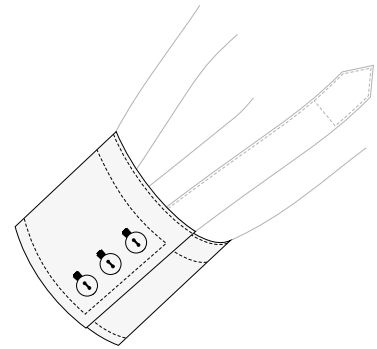
1 knoop  
Manchet hoogte 25, 50 of 65 mm



Kode

**H052**

2 knoops  
Manchet hoogte 65 of 80 mm

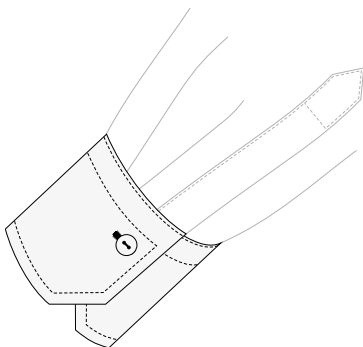


Kode

**H053**

3 knopen  
Manchet hoogte 80 mm

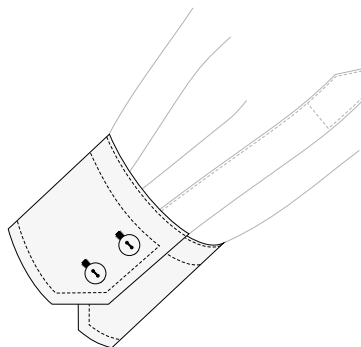
Enkel manchet  
schuin



Kode

**H061**

1 knoop  
Manchet hoogte 50 of 65 mm



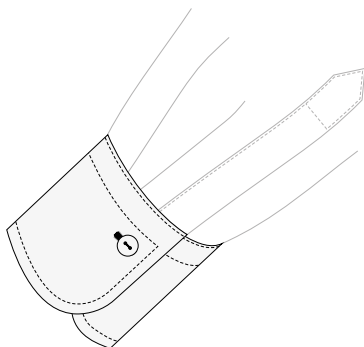
Kode

**H062**

2 knoops  
Manchet hoogte 65 of 80 mm



Enkel manchet  
rond

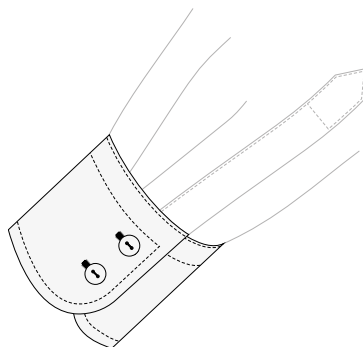


Kode

**H071**

1 knoop

Manchet hoogte 50 of 65 mm



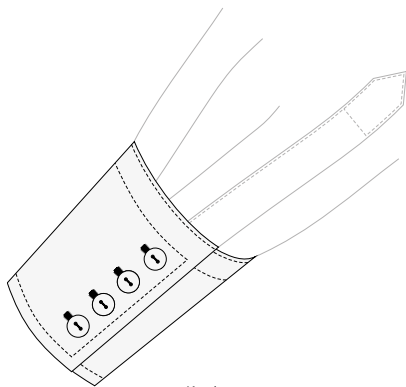
Kode

**H072**

2 knoops

Manchet hoogte 65 of 80 mm

Enkel manchet  
kegelvormig



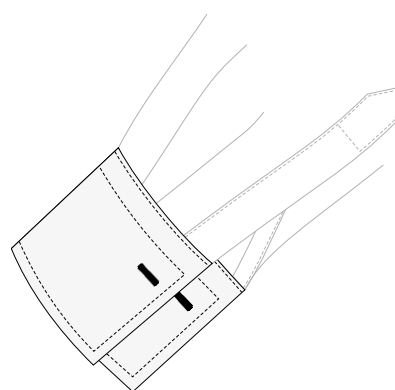
Kode

**H084**

Enkele manchet, recht met  
4 sluitknopen

Manchet hoogte 130 mm

Opletten bij het opmeten van de  
manchet maten!!! / Pagina 18



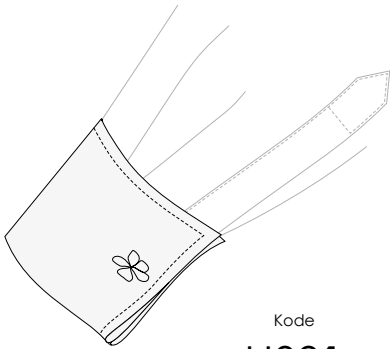
Wienermanchet - tweede  
knoopsgat

Optie

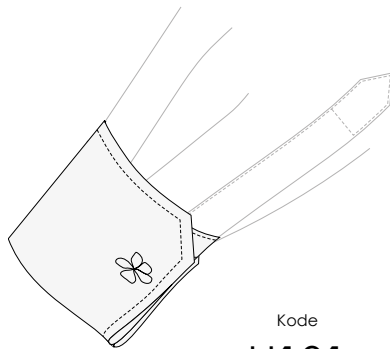
**WM**

## Dubbele manchetten

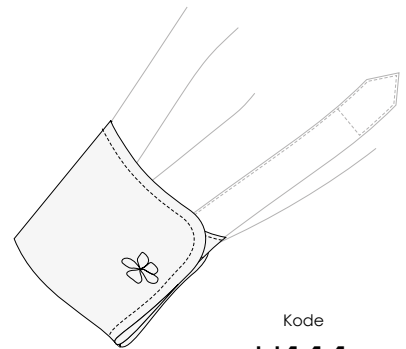
*Manchet hoogte 70, 80 of 90 mm*



Kode  
**H091**  
Recht



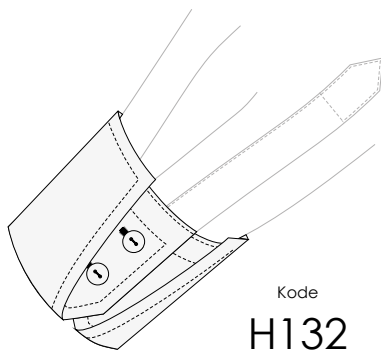
Kode  
**H101**  
Schuin



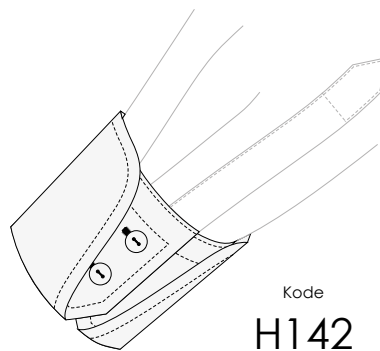
Kode  
**H111**  
Rond

## Dubbele manchetten met knopen

*Manchet hoogte 70, 80 of 90 mm*

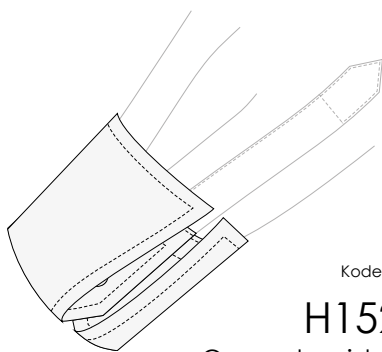


Kode  
**H132**  
Recht



Kode  
**H142**  
Rond

## Fashion manchet



Kode  
**H152T**  
Omgedraaide manchet,  
gevormd, 2 knoops sluiting

Variant  
*Manchethoogte 70 mm*

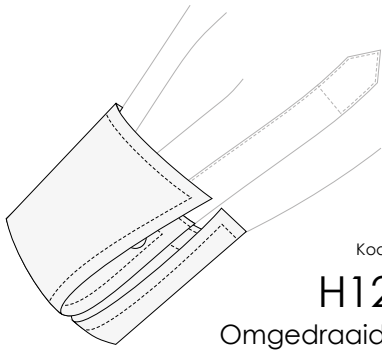


Kode  
**H152L**  
Lange manchet,  
gevormd, 2 knoops  
sluiting

Variant  
*Manchethoogte 135 mm*



## Fashion manchet



Kode  
**H121T**  
Omgedraaide manchet,  
gevormd, 1 knoop

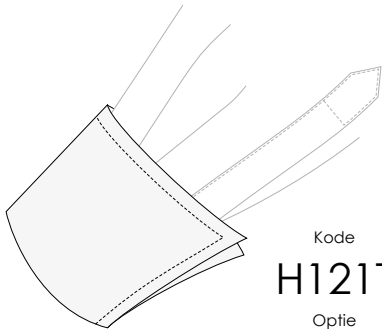
Variant  
*Manchethoogte 80 mm*



Kode  
**H121L**  
Lange manchet, gevormd,  
1 knoop

Variant  
*Manchethoogte 150 mm*

Variaties met gebruik van code WM  
voor Manchetteknopen.



Kode  
**H121T**  
Optie  
**WM**  
Omgedraaide manchet,  
gevormd, 1 knoop  
*Manchethoogte 80 mm*



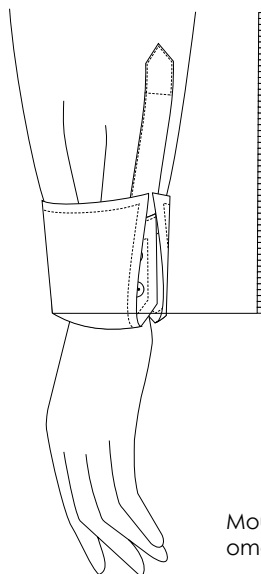
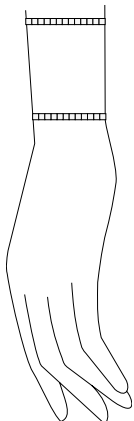
Kode  
**H121L**  
Optie  
**WM**  
Lange manchet, gevormd,  
1 knoop  
*Manchethoogte 150 mm*

## Twee manieren om Uw blouse te dragen op de manchethoogte

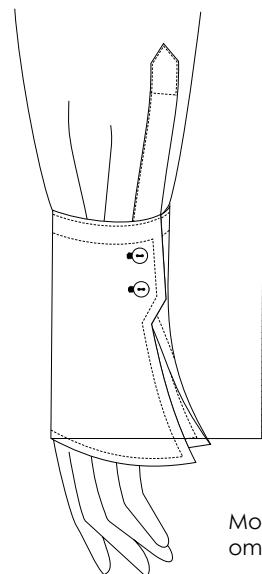
Omdraai manchet

Lange manchet

Opletten bij het opmeten van  
de manchet maten!!!



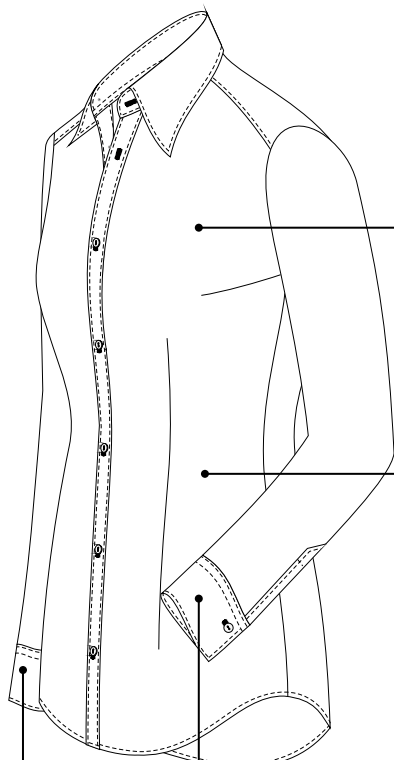
Mouwlengte  
omgedraaid



Mouwlengte niet  
omgedraaid

Kode  
**100**  
Zonder monogram

Monogram  
op de voorkant



Kode  
**101** Monogram boven  
borst

Kode  
**102** Monogram op  
taillehoogte

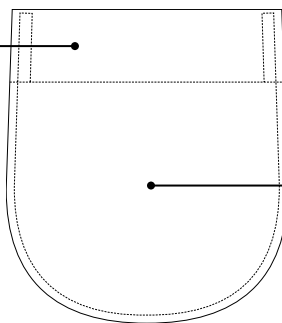
Rechter manchet  
Rechter manchet,  
diagonaal

Kode  
**103R**  
**103RD**

Kode  
**103L**  
**103LD**

Linker manchet  
Linker manchet,  
diagonaal

Kode **104L**  
Strook op borstzak



Kode **105L**  
Middel van borstzak

**a B C D E**

**A B C D E**

**A B C D E**

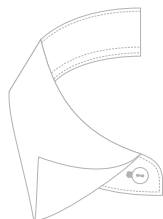
PA, Handschrift Italic

TA, Drukschrift Italic

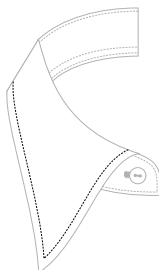
TN, Drukschrift Regular

Vermeld de kleur van de initialen  
op Uw order

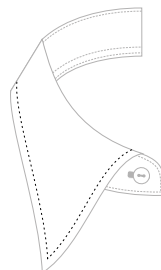




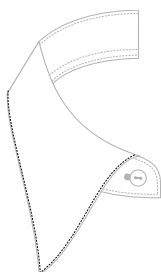
Kode  
**J00**  
Zonder stiksel



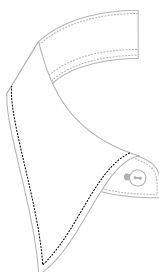
Kode  
**J02**  
Stiksel



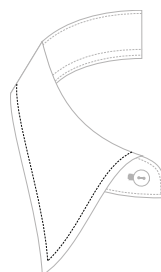
Kode  
**J03**  
HSE



Variant  
**01**  
1 mm



Variant  
**05**  
5 mm



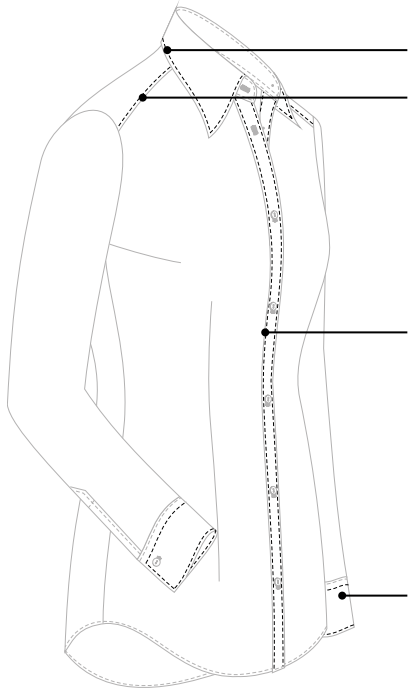
Variant  
**07**  
7 mm



## Kontrast - Stiksels \*

Bij deze optiekeuze passen Wij de stiksels aan op alle aangeduide naden:

Stiksel

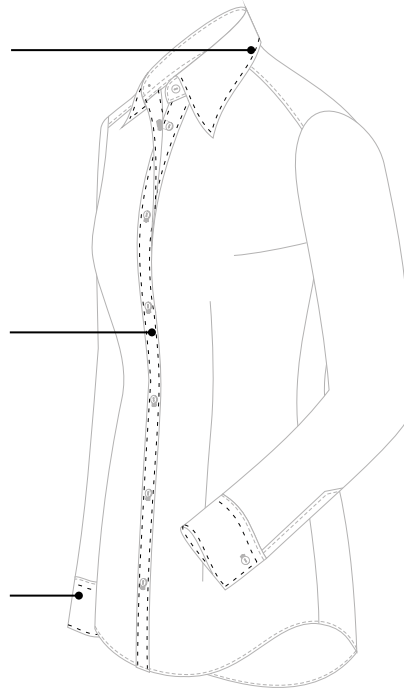


Bovenkraag  
Schoudernaad

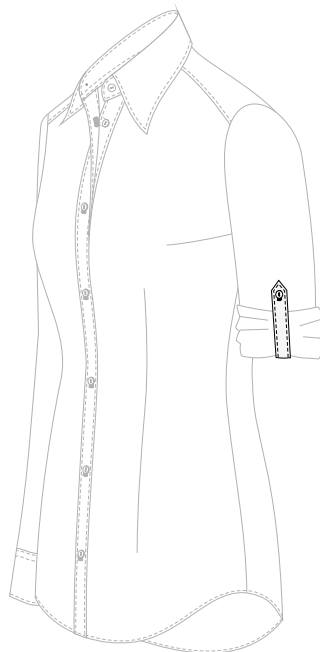
Voorant lijst

Manchetten

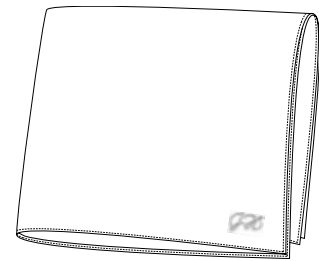
HSE



Kode **EPA** \*  
Epaulet



Kode **STA** \*  
Mouw regelaar



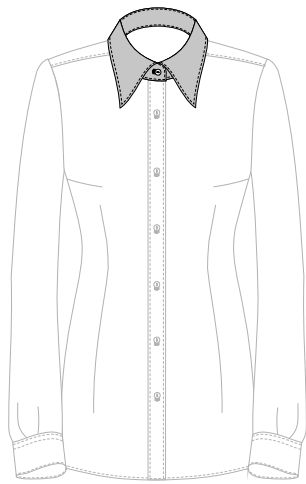
Kode **PS** \*

Pocket square

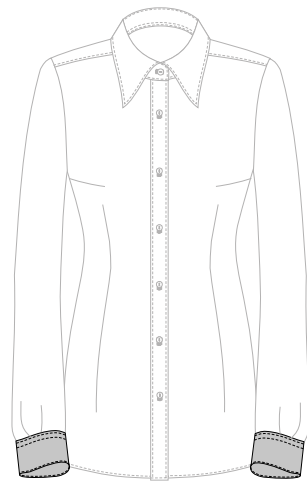
Kode **PSM** \*

Pocket square with monogram



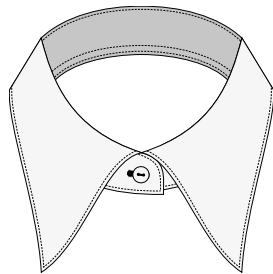


Kontrast - Kraag en Staanders \*

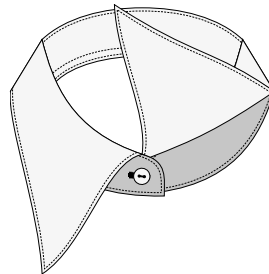


Kontrast - Manchetten \*

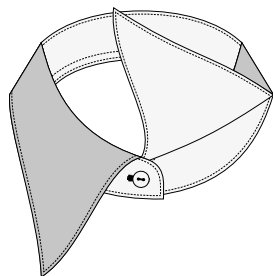
Kontrast - Kraag binnenstaander \*



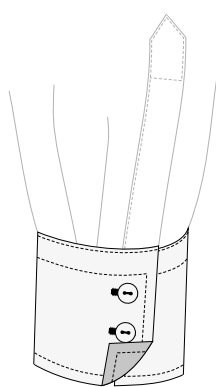
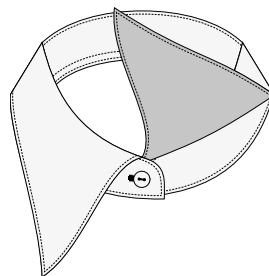
Kontrast - Kraag buitenstaander \*



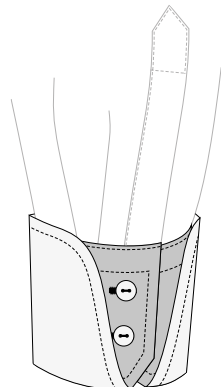
Kontrast - Buitenkraag \*



Kontrast - Onderkraag \*

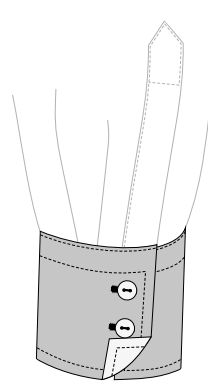


Enkel manchet

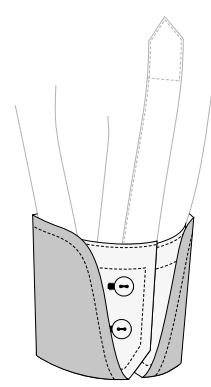


Dubbel manchet

Kontrast - Binnenkant Manchetten \*



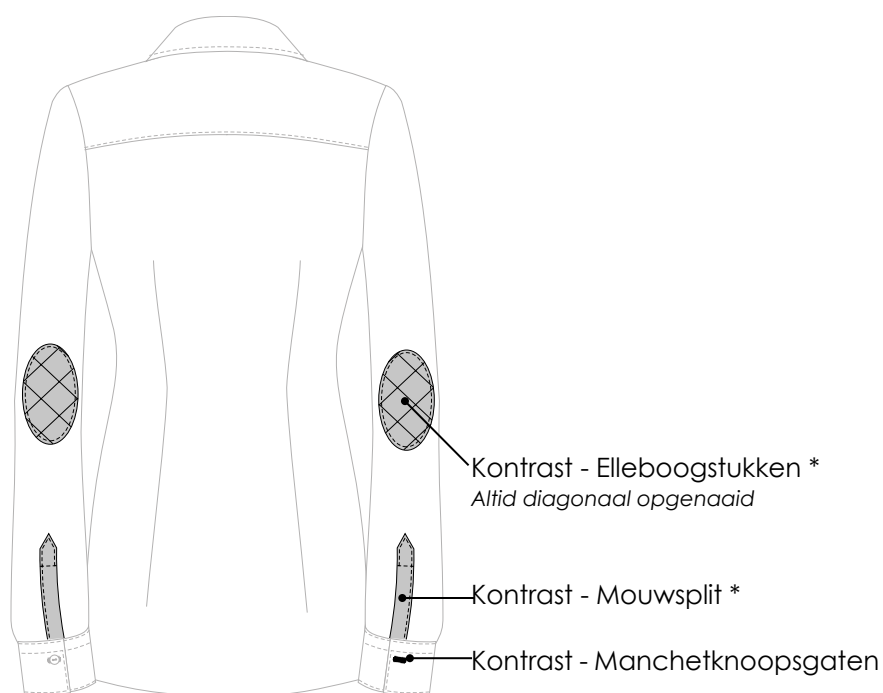
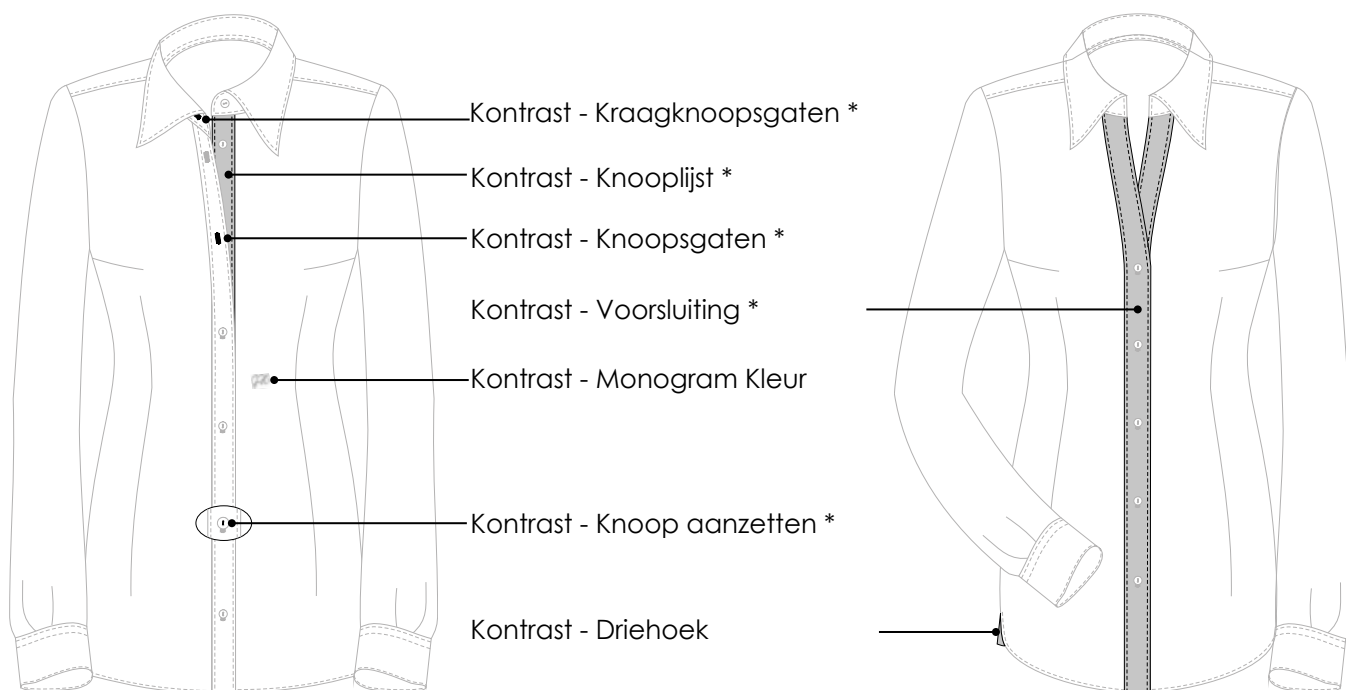
Enkel manchet



Dubbel manchet

Kontrast - Buitenkant Manchetten \*

## Verschillende contrasten



## KRAAGSTEVIGHEID

U heeft een keuze uit 4 verschillende stevigheden voor kragen en manchetten:

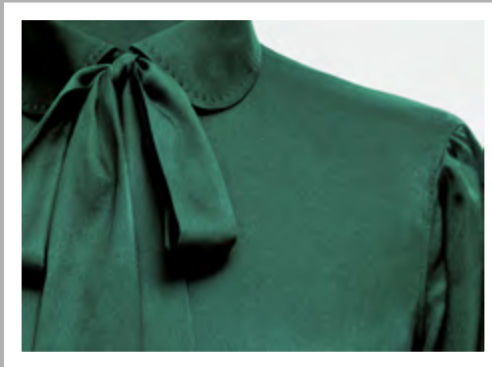
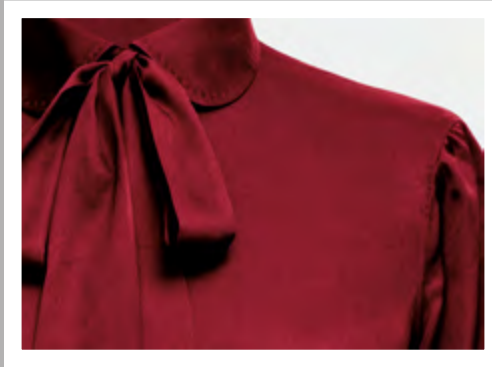
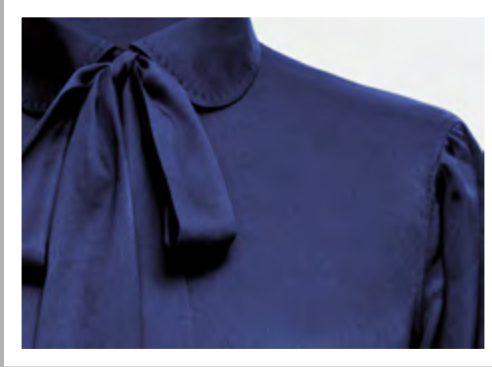
COLLAR EXTRA SOFT

COLLAR SOFT

COLLAR NORMAL

COLLAR HARD





**MADE TO MEASURE**